

We accept checks, cash, Amex, Visa, MasterCard, Discover, and Apple Pay

Herbs



- Key**
- Full sun
 - ◐ Part sun/part shade
 - Shade
 - 🐝 Attractive to bees
 - 🦉 Audubon-endorsed
 - 🦋 Butterfly-friendly
 - 👤 Hummingbird-friendly

- 🌿 Attractive foliage
- 🍷 Culinary
- 🌸 Edible flowers
- 🌿 Ground cover
- 🏠 Houseplant
- 🩹 Medicinal
- 🇺🇸 Minnesota native
- 🪨 Rock garden

- ❄️ Cold-sensitive: keep above 40°F
- ☠️ Toxic to humans
- 🔄 Saturday restock



Borage

H001 **Aloe Vera** *Aloe vera* 🌿
Succulent whose juice is used to treat minor burns, poison ivy, and rashes. Tender perennial. 12–24”h
○●🐝🦋 \$4.00—2.5” pot

H002 **Ashwagandha** *Withania somnifera*
Greenish white flowers, orange-red fruit on this small shrub. Used in ayurvedic medicine. Not hardy in Minnesota. 36–60”h ○👤 \$5.00—3.5” pot

Basil see box, below

Bay Laurel *Laurus nobilis*
Bay leaf, the well-known seasoning, comes from this tender tree that can spend the winter indoors. Small yellow flowers bloom in spring. Deer-resistant. Excellent in tubs or large pots. 12–72”h ○●🐝🦋
H021 🌿 \$3.00—3.5” pot
H022 \$13.00—1 quart pot

H023 **Borage** *Borago officinalis* 🌿
Profuse blue and pink flowers are an attractive and tasty garnish. Excellent for bees. Young leaves are good raw in salads and as cooked greens. Self-seeding annual. 24–36”h ○●🐝🦋👤 \$3.50—3.5” pot

H024 **Buzz Buttons** *Acmella oleracea* 🌿
Curious, olive-shaped 1” yellow flower clusters on stalks, each with a rust-burgundy “eye” on top. They look like bullseye-painted drumsticks or some very weird eyeball-on-toothpick hors d’oeuvres. Bronze-tinted stems and foliage. Tender perennial from Brazil. Syn. *Spilanthes oleracea*. 12–15”h by 24–30”w ○●🐝🦋
\$3.00—3.5” pot

H025 **Catnip** *Nepeta cataria* 🌿
Leaves are euphoric for cats and mildly sedative for us. Good for salads and tea. Short-lived, self-seeding perennial. 12–36”h by 12”w ○●🐝🦋 \$2.50—2.5” pot

H026 **Chamomile, German** 🌿
Matricaria recutita
Small white and yellow flowers with an apple scent. Dried flowers are good for tea or added to bath water. Good in arrangements or potpourri. Annual. 12–18”h ○●🐝🦋 \$2.50—2.5” pot

H027 **Chamomile, Roman** 🌿
Chamaemelum nobile
Gray-green leaves and miniature white daisies. Leaves are thicker than German chamomile. Flowers smell like apples. Originates in northwestern Europe and Northern Ireland. Perennial. 12”h ○🐝🦋
\$3.50—3.5” pot

Chives *Allium*
Tubular leaves, stems, and globe-shaped flowers. Easy to grow and once established lasts for years. Perennial. ○●🐝🦋
\$2.50—2.5” pot:

H028 **Fine Leaf** *A. schoenoprasum* 🌿—Classic with purple flowers in late spring. Mild onion flavor. Divide every few years. 12–24”h 🦋👤

Chives continued
\$2.50—2.5” pot (continued):
H029 **Garlic** *A. tuberosum* 🌿—Abundant white flowers in late summer, beautiful edible garnish. Flat leaves with fine flavor. Perennial and self-seeds readily. 12–18”h

\$3.50—2.5” pot:
H030 **Forescate** *A. schoenoprasum*—Large pink flowers in late spring. Mild onion flavor. Divide every few years. 10–18”h 🦋

Cilantro *Coriandrum sativum*
Flowers, leaves, roots, and seeds can all be used to flavor a wide variety of foods, especially Mexican and Asian dishes. Popular in salsa. Native to Iran. Dried seed is coriander. Annual. 12–18”h ○🐝
\$3.00—seed packets:

H031 **Santo** 🌿—55 days leaf, 95 days seed. Good flavor and upright habit for easy harvesting. Can be cut and allowed to regrow for a second harvest. Bolt-resistant. Open-pollinated. 🌿
\$5.00—6 plants in a pack:

H032 **Cruiser** 🌿—50–55 days. Get a head start on your seed-grown cilantro. Vigorous and extra slow to bolt.

H033a **Coffee** *Coffea arabica* 🌿
Shiny leaves on this tender shrub make for a nice container plant to winter indoors. Mature plants produce an abundance of jasmine-scented white flowers. Best in filtered sunlight and fast-draining potting soil, kept moist. 15–20’ in the tropics, smaller here. ○🐝🦋☀️
\$4.00—2.5” pot

H033b **Comfrey, Variegated**
Symphytum × uplandicum Axminster Gold
Bold rosette of long, broad, fuzzy gray-green leaves with wide, irregular lemon yellow margins. Bell-shaped mauve-pink flowers in clusters in June. This variegated perennial does not spread vigorously. Comfrey is a great “green manure” in a permaculture landscape. Deer-resistant. 18”h by 24–48”w ○●🐝🦋👤
\$14.00—5.25” pot

H034 **Cumin, Black** *Nigella sativa* 🌿
The white petals of its flowers are bluish green near the tip and surround a fancy, spherical fruit capsule in which the seeds develop. Also called black seed. Ground seeds smell like fennel, anise, or nutmeg and taste slightly bitter, spicy, and piquant. Self-seeding annual. 6–12”h ○🐝🦋 \$3.00—4 plants in a pack

H035 **Curry Plant** *Helichrysum italicum* 🌿
Gray foliage and yellow flowers, very fragrant. Use like bay leaves to flavor soups, stews, and marinades, then remove before serving. Essential oils are used in lotions and soaps. Tender perennial. 6–20”h ○●🐝🦋
\$4.00—4” pot



Basil *Ocimum basilicum* ○🐝🦋👤🍷🌿👤🌡️

Great for tea, pesto, salads, and dressings. Remove flowers for best-tasting leaves, or keep them to feed the bees and butterflies. These annual plants are native to sunny, warm Mediterranean climates and will not withstand frost. Water regularly and provide good drainage. Don’t plant outdoors until late May.

H003 **Sweet Genovese, Devotion DMR** 🌿—Classic sweetness and aroma, ideal for pesto, and bred at Rutgers University to be downy mildew-resistant (DMR). 24–36”h \$3.00—4 plants in a pack

H004 **Sweet Genovese, Aroma** 🌿—Classic sweetness and aroma, ideal for pesto, and also Fusarium-resistant. Bolt-resistant, with 3” leaves that hold well in storage. 20–24”h 🌿
\$3.00—3.5” pot

H005 **Sweet Genovese, Prospera Red** 🌿
—Dense and slow to bolt with 3–4” strongly cupped dark purple leaves. DMR plus Fusarium-resistant.
\$3.00—3.5” pot

H006 **Sweet Genovese, Prospera Compact** 🌿—Dense and slow to bolt with 3–4” strongly cupped leaves. DMR plus Fusarium-resistant. 16–18”h
\$5.00—6 plants in a pack

\$3.00—4 plants in a pack:
H007 **Thai Magic** 🌿—Late-blooming with large leaves. Popular in Asian cooking. Purple bracts and magenta flowers. 18–22”h

H008 **Thai, Siam Queen** 🌿—Huge green leaves contrast nicely with sturdy purple stems. Purple bracts and magenta flowers. Outstanding fragrance and flavor: sweet and spicy with anise overtones. Used in Asian cooking. 28–40”h

\$4.00—4” pot:
H009 **Organic Thai** 🌿—Purple stems and bracts with magenta flowers. 2” green leaves. 16–20”h 🌿

\$3.00—3.5” pot:
H010 **African Blue** *O. basilicum* × *kilimandscharicum* 🌿—Showy purple flowers on vigorous, bushy plants with purple-tinted leaves. 36”h 🦋

H011 **Cardinal** 🌿—Ornamental enough for your flower garden, but still tasty. Burgundy stems and showy deep red-purple bracts. Spicy fragrance. 24–30”h 🦋

H012 **Mrihani** 🌿—Spicy, ruffled leaves with undertones of anise and fennel. From Zanzibar (“mrihani” means “sweet basil” in Swahili). Resistant to downy mildew. 18”h

H013 **Cinnamon** 🌿—Dark purple flowers and purple stems. Sharp cinnamon fragrance. Finest tea basil, good in fruit salads. 12–24”h

\$3.00—4 plants in a pack:
H014 **Holy** *O. sanctum* 🌿—Traditional religious and medicinal significance in South Asia. Purple flowers. Takes part shade. 18”h
H015 **Lemon** 🌿—Delicious small-leaf variety combines flavors of lemon and basil. 12–24”h

H016 **Mammoth** 🌿—Very large ruffled leaves, especially suitable for drying or stuffing. Familiar sweet basil flavor. 12–24”h
H017 **Minette** 🌿—Delicious, eye-catching basil creating spheres of bright green that stay compact and uniform. Perfect for edging, miniature knot gardens, or in containers. 10”h

H018 **Napoleatano** 🌿—Heirloom variety from Italy with light green crinkled leaves. 36”h

H019 **Spicy Globe** 🌿—The “good basil” of French cuisine. Very short with small leaves, making it a sweet edging plant. 12”h

\$3.00—4 plants in a pack:
H020 **Mixed four-pack** 🌿—One each of Sweet Genovese, Lemon, Spicy Globe, and Thai Siam Queen.

What’s a bract? It’s not a petal or a leaf, but another part of a plant that’s sometimes showier than the flower, and that’s when we mention it. Here’s a helpful article about bracts: www.bit.ly/2mu11je



BASIL PLANTING TIP:
It is a good idea to vary the location where you plant your basil each year. Basil is susceptible to fungal diseases that accumulate in soil over time. Rotate your crops!

Herbs

Plant widths are similar to their heights unless noted otherwise.

H046 Ginger, Culinary 🌿
Zingiber officinale Bubba Baba
Best known for the spice that is produced from the grated, chopped, or powdered root of the plant. Harvest when the narrow leaves and the stalk wither, but before frost. Prefers heat, humidity, filtered sunlight, and rich, moist soil (not water-logged). Tender perennial that can be over-wintered indoors. 24–48”h
🌱🌿🍷🍷🍷 **\$9.00—5.25” pot**

H047 Henna, White-Flowering **NEW**
Lawsonia inermis
Clusters of fragrant small white flowers have a rose-like aroma. Small evergreen tree whose lance-shaped leaves produce the orange dye used as a coloring for skin, nails, hair, and textiles. Used in India and the Middle East for thousands of years, henna is of great importance in Islamic, Buddhist, and Hindu ceremonies, especially weddings, where the bride and her female guests may decorate their hands and feet with intricate patterns. Native to semi-arid and tropical areas of Asia and northern Africa, where it grows to 24’. Here, it is best grown in a pot and brought inside to a sunny window when temperatures fall much below 60°F. 🌱🌿🍷 **\$12.00—5” pot**

H048 Horseradish *Armoracia rusticana*
Spicy root used as a condiment. Provide rich soil for the most pungent roots. Does best planted in the ground; in a smaller garden you might want to contain it by planting in a pot or tub buried in the ground. Perennial. 36”h 🌱🌿🍷 **\$4.00—bareroot**

H049 Indigo, Japanese **NEW**
Polygonum tinctorium
Tiny pink flower sprays bloom late summer–fall, but grown for its indigo dye-producing leaves. Yellow and green dyes can also be made depending on method. Main source of indigo in East Asia before the more concentrated indigo of the *Indigofera* species began to be imported from South Asia. Suited for temperate climates, it likes fertile soil, heat, humidity, and lots of water. Not hardy in Minnesota. 24–36”h 🌱🍷 **\$6.00—6 plants in a pack**

Lavender see box at right

Lemon Balm *Melissa officinalis*
Small white tubular flowers in late summer. Makes a refreshing iced tea or seasoning in breads and desserts. Prefers part shade. Mulch for winter protection. 24”h
🌱🌿🍷🍷 **\$2.50—2.5” pot:**

H066 Lemon Balm 🌿—Strong lemon scent and flavor. Self-seeding perennial.

\$3.00—3.5” pot:
H067 Orange Mandarinina 🌿—Orange-scented leaves. Mounding to spreading perennial.

H068 Lemon Grass *Cymbopogon citratus* 🌿
Leaves and stalks are used in Asian cooking and in teas. Many medicinal and culinary uses. It is frost-tender and could spend the winter in a sunny window. Best in a container. 36–60”h 🌱🌿🍷 **\$3.00—3.5” pot**

H069 Lemon Mint *Monarda citriodora* 🌿
Lemon-scented leaves are delicious and often used in teas. Showy, tiered pinkish purple flowers are long-lasting in fresh bouquets and dry nicely. Native to Appalachia. Annual. 24–36”h 🌱🌿🍷🍷 **\$3.00—3.5” pot**

H070 Lemon Verbena *Aloysia triphylla* 🌿
Wonderfully fragrant lemony herb, used with chicken and fish, in dressings, and as tea. Light green pointed leaves. Great for topiaries. A tender perennial that can be potted and wintered inside. 36”h 🌱🌿 **\$3.50—3.5” pot**

H071 Maddar *Rubia tinctorum* **NEW**
Foliage resembles woodruff or bedstraw. Long stems may need support. Roots used by ancient Egyptians, Greeks, and Romans for bright red textile dye. In its native Mediterranean region, madder is a perennial, but in Minnesota it needs to be grown in large pots to be brought indoors during the winter. Roots should have at least three years to grow to pencil-thickness before harvesting. 36–48”h 🌱🌿 **\$6.00—4.5” pot**

H072 Magenta Plant 🌿
Dicliptera tinctoria
Native to Southeast Asia’s humid lowlands, this lush tropical plant has small pink to magenta two-petaled flowers and a lot of magenta dye hidden in its green leaves. Extracted from the leaves by boiling, the flavorless dye is used to color food, particularly Vietnamese taro-filled cakes and glutinous rice desserts. Does best in moist, fertile, well-drained soil. Roots easily from cuttings without rooting hormone. Treat as an annual here. 12–36”h 🌱🌿 **\$3.00—3.5” pot**

H073 Marjoram, Sweet 🌿
Origanum majorana
A mild, sweet oregano relative. Used in vinegars, soups, and dressings. Add fresh leaves to salads. Good herbal bath. Treat as an annual. 18”h 🌱🌿🍷🍷 **\$2.50—2.5” pot**

H074 Marshmallow *Althaea officinalis* 🌿
Native to Europe, the leaves and roots of this reliable medicinal and edible plant have been used for centuries. Beautiful in the garden with white to light pink flowers, it thrives in moderately fertile, well-drained soil. Perennial. 36–72”h 🌱🌿🍷 **\$3.00—3.5” pot**

Mint *Mentha*
Aromatic and easy. Good for tea and potpourri. The flowers attract butterflies; however, the flavor changes once flowers appear. Spreads, in some cases aggressively. 🌱🌿🍷🍷

\$2.50—2.5” pot:
H075 Peppermint *M. × piperita* 🌿—Refreshing tea, iced or hot. Good in fruit salads. Easily dried for year-round use. Perennial. 24”h

\$3.00—2.5” pot:
H076 Thai *M. arvensis*—Important herb in Thai cuisine with a flavor like spearmint. Dark red stems. Perennial. 18”h

\$3.00—3.5” pot:
H077 Berries and Cream 🌿—Mild, with a fruity aroma. May be perennial. 18–24”h
H078 Corsican *M. requienii* 🌿—Creeper, good in rock gardens, miniature gardens, and along paths. Tolerates light foot traffic. May be perennial. 1”h

H079 Ginger 🌿—Spicy ginger-scented mint with green leaves striped with gold. May be perennial. 18–24”h

H080 Hillary’s Sweet Lemon **NEW** 🌿—Sweet and fruity flavor, bred from a cross of apple and lime mints. Spiky lavender flowers. Developed by amateur hybridizer Jim Westerfield in rural Illinois, and named for Hillary Clinton. Treat as an annual. 12–18”h

H081 Jessica’s Sweet Pear 🌿—Leaves have a pear-like scent and sweeter taste. Pink flowers. Upright plants without runners. May be perennial. 12–20”h 🍷

H082 Margarita 🌿—Lime-scented leaves with bronzed edges and small lilac purple flowers midsummer. Perennial that spreads by runners, not rhizomes. Excellent in margaritas, mixed drinks, and as a garnish. 6–12”h by 18–24”w 🍷

H083 Mojito *M. × villosa* 🌿—You could use spearmint in your Cuban mojito, but this is the real deal. The flavor is mild and warm, rather than pungent and sweet. Treat as an annual. 18–24”h

H084 Spearmint, Moroccan *M. spicata* 🌿—Potent, sweet spearmint flavor. Combine leaves with green tea and sugar to make Moroccan tea. Also delicious in vegetable dishes, sauces, and jellies. Compact plant suited to containers. Prefers dappled shade. Perennial. 24”h 🍷

\$3.50—2.5” pot:
H085 Candy mint *M. × piperita*—Large, toothed leaves with reddish stems. An ideal culinary herb to flavor foods like jellies, candy, meats, salads, soups, and beverages. Most commonly used in chewing gum, mouthwash, toothpastes, and medicines. Perennial. 12–18”h

H086 Chocolate *M. × piperita*—Bronzy foliage with a chocolate scent. Perennial. 24”h

H087 Grapefruit *M. aquatica citrata*—Large puckered leaves with the scent of grapefruit. Perennial. 18”h

H088 Lime *M. aquatica citrata*—Bright green leaves with a strong lime scent and flavor. Try this in your favorite salsa recipe or toss in your next margarita. May be perennial. 24”h

\$3.50—2.5” pot:
H089 Spearmint, Kentucky Colonel *M. spicata*—Ruffled 3” leaves with a sweet, strong spearmint fragrance and taste. Spikes of small lilac to pink to white flowers in summer. Used in the official mint juleps of the Kentucky Derby. Perennial. 12–24”h

\$3.50—3.5” pot:
H090 Orange *M. aquatica citrata* 🌿—Dark green, round leaves tinged with purple. Purple flowers. Lemon scent when crushed, and slight orange flavor. Makes good tea. Perennial. 24”h

H091 Mixed Herbs 🌿
Chives, Oregano, Sage, and Thyme
Classic cooking companions. 🌱🍷 **\$3.00—4 plants in a pack**

Oregano *Origanum*
Essential for Italian and Greek cooking. Leaves can be used fresh or dried in tomato sauces, soups, meat, fish, and salads. 🌱🌿🍷🍷
\$3.00—3.5” pot:

H092 Dwarf *O. microphyllum* 🌿—Purple flowers emerge above a low mat of leaves on wiry brown stems. Theresa Mieseler of Shady Acres Herb Farm says this variety grows wild in Crete and is one of the ingredients in Cretan mountain tea. May be perennial here. 10–12”h

H093 Greek *O. vulgare hirtum* 🌿—The most flavorful oregano, according to herb aficionados. Perennial. 12–36”h 🍷🍷

H094 Hilltop *O. vulgare* 🌿—Hybrid combining the best of spicy oregano and sweet marjoram. May be perennial here. 18”h

H095 Hot and Spicy *O. vulgare* 🌿—Strong flavor. May be perennial here. 18–24”h 🍷

H096 Oregano, Cuban *Plectranthus amboinicus*
Succulent, aromatic, fuzzy leaves. Drought-tolerant. Used in many parts of the world, including the Caribbean, Africa, Asia, and South America in soups, stews, salads, beans, and meat dishes. Oregano-scented. Treat as an annual or over-winter indoors. 12–18”h 🌱🌿🍷 **\$3.50—2.5” pot**

Parsley, Curly *Petroselinum crispum*
Quintessential garnish, chock-full of vitamins. Can be chewed to freshen breath (not just for humans; add it to your dog’s food, too). You can dig one up in the fall and pot it for fresh greens in the winter. Larval food for swallowtail butterflies. Biennial. 12”h 🌱🌿🍷🍷
H097 🌿 **\$3.00—3.5” pot** 🍷🍷
H098 🌿 **\$3.00—4 plants in a pack**



Lemon verbena



Lavender *Lavandula* 🌱🌿🍷🍷🍷🍷

Upright spikes of small flowers. Very fragrant and dries beautifully for potpourri. Can be added to sugar, shortbread, or lemonade. A tender perennial from southern Europe. Very few varieties are fully hardy in Minnesota, but can be wintered indoors or treated as an annual. Needs excellent drainage to survive the winter. Reblooms with regular dead-heading. Deer- and rabbit-resistant.

H050 Big Time Blue *L. angustifolia* 🌿—Early-blooming with large purplish blue flowers. 24”h **\$3.00—3.5” pot**

H051 Cynthia Johnson *L. angustifolia* 🌿—Silvery foliage with bluish purple flowers. Cynthia and Scott Johnson of Maple Grove spent 23 years developing a lavender that would survive Minnesota winters. Further developed and introduced by Brigitte and Harvey Buchite, until recently of Hidden Springs Flower Farm in Spring Grove. 24”h **\$5.00—3.5” pot**

H052 French Fringed *L. dentata* 🌿—Tiny purple flowers with lavender bracts in 2” spikes. Bushy gray-green leaves with edges that are scalloped with little rounded teeth. Good for shaping into topiary. Tolerates more humidity than most. 24–36”h 🍷 **\$3.00—3.5” pot**

H053 La Diva Papillon Deep Rose *L. stoechas* **NEW** 🌿—Deep magenta flowers with bright pink bracts. Blooms early and continues all summer. Great at the front of the garden. Not hardy here. 12–18”h 🍷 **\$3.00—3.5” pot**

H054 Lady *L. angustifolia* 🌿—Smells good in the garden and in sachets and potpourris. 8–10”h **\$2.50—2.5” pot**

H055 Meerlo 🌿—Leaves have wide pale yellow margins. Lavender flowers with classic fragrance. 24–36”h 🍷 **\$3.00—3.5” pot**

H056 Munstead *L. angustifolia* 🌿—English lavender. Excellent low-growing variety for lining a path or garden bed. A somewhat hardy lavender in our climate. 12–18”h **\$3.00—3.5” pot**

H057 Phenomenal *L. × intermedia* 🌿—Silvery, aromatic foliage with blue-purple flowers. Said to over-winter outdoors in our area. Endures hot, humid conditions better than most. Grows in an even mound. 24–36”h **\$3.00—3.5” pot**

H058 Platinum Blonde 🌿—Bluish lavender flower spikes and eye-catching greenish gray leaves with a cream margin. 12–18”h **\$4.00—3.5” pot**

H059 Sensational *L. × intermedia* 🌿—Silvery blue foliage topped with long-blooming 4” deep purple flowers. Scent is low in camphor. 24–30”h 🍷 **\$3.00—3.5” pot**

H060 Silver Mist *L. angustifolia* 🌿—Perhaps the most silver foliage of any lavender. Purple flowers in midsummer, one to two weeks later than most lavenders. May be perennial here. 16–20”h **\$3.00—3.5” pot**

H061 Spanish, Madrid Purple *L. stoechas* 🌿—Bright purple with bracts or “bunny ears” in shades of lilac. 18–24”h **\$4.00—3.5” pot**

H062 Spanish, Madrid Rose *L. stoechas* 🌿—Short flower stalks topped with lavender-pink bracts with dark purple flowers. Silver-green foliage. 18–24”h **\$4.00—3.5” pot**

H063 Spanish, Primavera *L. stoechas* 🌿—Red-violet bracts above the purple spikes of flowers. Blooms all summer. 16–18”h 🍷🍷 **\$3.00—3.5” pot**

H064 SuperBlue *L. angustifolia* 🌿—Blue-violet flowers and gray-green foliage. Compact, suitable for edging. 12”h 🍷🍷 **\$3.00—3.5” pot**

H065 Sweet *L. × heterophylla* 🌿—One of the tallest lavenders, very productive and fragrant. Sturdy, straight stems. 36–48”h **\$3.00—3.5” pot**

We accept checks, cash, Amex, Visa, MasterCard, Discover, and Apple Pay

Herbs

Key

- Full sun
- ◐ Part sun/part shade
- Shade

- 🐝 Attractive to bees
- 🐦 Audubon-endorsed
- 🦋 Butterfly-friendly
- 🐦 Hummingbird-friendly

- 🌿 Attractive foliage
- 🍷 Culinary
- 🌸 Edible flowers
- 🌱 Ground cover
- 🏠 Houseplant
- 🩹 Medicinal
- 🌳 Minnesota native
- 🪨 Rock garden

- ❄️ Cold-sensitive: keep above 40°F
- ☠️ Toxic to humans
- 🔄 Saturday restock

Parsley, Italian *Petroselinum hortense*

Same as curly parsley, but with flat leaves. Larval food for swallowtail butterflies. Biennial. 12–18”h ○○🌿🍷
H099 🍷 \$3.00—3.5” pot **ORGANIC**
H100 🍷 \$3.00—4 plants in a pack

H101 Parsley, Japanese 🍷 *Cryptotaenia japonica* Mitsuba

Purple-bronze stems with heart-shaped leaves, small white flowers midsummer. Flavor is a mix of celery, parsley, and cilantro. All parts of the plant are edible, use the leaves for garnish or cook the leaves and roots as a vegetable. Excellent for microgreens. Reseeding perennial; deadhead to prevent spread. 18–24”h by 8”w ○🍷🌿
\$3.00—3.5” pot

H102 Patchouli *Pogostemon heyneanus* 🍷

Tropical native of the East Indies. Used for the fragrance of the dried leaves. Tender perennial. 12”h ○❄️
\$3.00—3.5” pot

H103 Pepper Vine, Black *Piper nigrum* **NEW**

The source of the ubiquitous spice of the same name. A tropical vine with broad, shiny leaves and long drooping clusters of small white flowers. Fruits turn from green to red. Under ideal conditions it can grow up to 30’ tall. Makes a good container plant to over-winter indoors, since it stops growing when temperatures drop below 65°F and is killed by frost. Loves heat and humidity. Takes two–four years to produce flowers and set fruit (peppercorns). 10–15”h ❄️
\$18.00—4” pot

H104 Roselle *Hibiscus sabdariffa* 🍷

Native to West Africa and grown for the plump red coverings around its seedpods. As days shorten, the plant produces 3” white to pale yellow flowers with dark red centers. After the seedpods start to form,

harvest the pod coverings (remove the seedpods inside) and use them to make a refreshingly zingy tea. Seedpod coverings are also used to make jam, cranberry-like sauces, and many other foods worldwide. The growing tips and leaves are a tangy addition to salads, stir-fries, and soups. Because of our short growing season, you may need to bring the plant inside for the seedpod coverings to ripen completely. We’re not sure if this tender perennial can be over-wintered indoors or not. 48–84”h ○🍷🌿🍷
\$3.00—3.5” pot

Rosemary *Salvia rosmarinus*

Enhances many meat and vegetable dishes, vinegars, and dressings. Use for a refreshing bath or hair rinse. Likes poor soil and hot sun. Small deep blue-lavender flowers in winter to early spring. Suitable for bonsai. Deer-resistant. To over-winter this tender shrub indoors, keep it potted during the summer and place in a south or west window in fall. Do not over-water. ○🍷🌿
\$3.00—3.5” pot:

H105 Barbeque 🍷—Upright, perfect for topiary and making barbeque skewers. Small pale blue flowers from mid- to late spring. Large needles. 24–48”h

H106 Gorizia 🍷—Robust with white-backed leaves. Flowers are lighter lavender-blue. 48”h

H107 Shady Acres 🍷—Upright plant with 1” dark green leaves, introduced in 1999 by Theresa Mieseler of Shady Acres Herb Farm in Chaska. Pinch to encourage branching. 48”h

H108 Spice Island 🍷—Pungently flavored. Upright habit. Good for topiaries. 24–36”h

H109 Tuscan Blue 🍷—Upright plant with slightly glossy foliage. 36”h

\$3.50—2.5” pot: H110 Golden Rain—Young foliage is yellow-green on a nice upright plant. Dark violet flowers. 6–24”h

\$3.50—3.5” pot: H111 Creeping 🍷—Low growing and sprawling. 6”h 🍷 \$11.00—1 gal. pot:

H112 Get a head start 🍷—An upright, more mature plant in a large pot. 12”h

Sage *Salvia officinalis*

Used in poultry stuffing, sausage, salads, egg dishes, breads, and vegetable dishes. Also used to freshen breath. Spread the dried leaves among linens to discourage insects. Excellent as a potted summer herb; over-winter inside in a sunny window or under lights. Deer- and rabbit-resistant. Drought-tolerant. Perennial, but not reliable here. ○🍷🌿🍷
\$3.00—3.5” pot:

H113 Berggarten 🍷—Broad leaves with silver accents, ornamental. Good flavor. 18”h

H114 Icterina 🍷—Gold and green foliage. Compact and decorative, great for containers. 12–15”h

H115 Tricolor 🍷—Green, pink, and white foliage. 15”h

\$3.50—3.5” pot: H116 Purple 🍷—Purple-tinged leaves and bluish purple flowers, lovely in containers. 24–36”h

Sage, Pineapple *Salvia elegans*

Sweet pineapple scent and yellow-green foliage. Use fresh in fruit salads and other foods; dried for tea and potpourri. Tender perennial, not hardy here. ○🍷
\$3.00—3.5” pot:

H117 Honey Melon 🍷—Edible, tubular red flowers begin blooming in early summer. Foliage has been described as smelling like melon, tangerine, anise, or pineapple. 24”h 🍷🌿🍷

\$7.00—5.25” pot: H118 Rockin’ Golden Delicious 🍷—Fragrant brilliant chartreuse foliage. Red flowers in very late fall, but the foliage is wonderful even without flowers. 24–48”h

H119 Sage, White *Salvia apiana* 🍷

Used as incense. A tender perennial that can be over-wintered indoors, it can take up to three years to reach mature size at which point it has aromatic white flowers. Also called bee sage. 24–48”h ○🍷🌿🍷
\$3.00—3.5” pot

Savory *Satureja*

Aromatic leaves are used in sauces, stuffings, and bean dishes. Also makes a good tea. ○🍷🌿
\$2.50—2.5” pot:

H120 Winter *S. montana* 🍷—Peppery leaves favored especially in North Africa. Perennial that becomes woody. 18”h

\$3.00—3.5” pot: H121 Lemon *S. biflora* 🍷—Small leaves have a clean lemon scent. Complements fish, chicken, and vegetable dishes. Annual. 12”h

H122 Self-Heal *Prunella vulgaris* 🍷

Charming violet flowers all summer. Part of the bee lawn mixes that are increasingly popular. Perennial and native member of the mint family. Will seed in a natural lawn. Horticultural seed source. 8”h ○🍷🌿🍷
\$2.50—2.5” pot

Shiso *Perilla*

Aromatic leaves with crimped edges are used in Asian cuisines in sushi, spring rolls, sauces, salads, and stir fries. Self-seeding annual. ○🍷🌿🍷
\$3.00—3.5” pot:

H123 Green *P. frutescens* 🍷—Green. 24–36”h

H124 Red *P. frutescens crispata* 🍷—Cinnamon-scented with ornamental, ruffled purplish red leaves. 24–36”h 🍷

H125 Vietnamese, Tia To *P. frutescens* 🍷—The taste of this green and purple shiso is variously described as mint-basil, curry-like, and a combination of cumin, cilantro, and parsley with a hint of cinnamon. Try it for yourself! 18–24”h 🍷

H126 Sorrel, Common *Rumex acetosa* 🍷

Early-season greens with tangy lemon flavor. Long-lived perennial that can sustain frequent and severe cutting. Great in creamy soups and salads as well as egg, fish, or potato dishes. Mildly toxic if eaten in large quantities. 24”h ○🌿🍷
\$2.50—2.5” pot

H128 Stevia *Stevia rebaudiana* 🍷

Sweeter than sugar! The South American herb used as a sugar replacement. Treat as an annual. 12”h ○🍷🌿
\$3.50—3.5” pot

H129 Tarragon, French 🍷 *Artemisia dracunculus*

Strongly licorice-flavored herb. Great for flavored vinegar or used fresh with chicken, carrots, and omelettes. Perennial, but can be potted in late fall for winter windowsill use. 36”h ○🌿🍷
\$3.50—3.5” pot

H130 Tarragon, Mexican *Tagetes lucida* 🍷

With the sweetness of licorice, this handsome tender perennial is like a milder French tarragon. Treat as an annual. It won’t self-seed in Minnesota. 36”h ○🍷🌿🍷
\$3.00—3.5” pot

Thyme *Thymus*

Easy-to-grow, bushy perennial with small leaves. Good in a summer pot. Ornamental as well as culinary and makes a soothing tea. ○🍷🌿🍷
\$3.00—3.5” pot:

H131 English *T. vulgaris* 🍷—10”h **ORGANIC**

H132 French *T. vulgaris* 🍷—10”h

H133 Lemon *T. citriodorus* 🍷—Lemon scent. 12”h

H134 Lime *T. citriodorus* 🍷—Pink flowers, citrus scent. 6–12”h

H135 Rose **NEW** 🍷—The aroma is a combination of old-fashioned rose and spicy thyme. May survive our winter. 6–12”h

H136 Sparkling Bright **NEW** 🍷—Variegated green and white foliage with pink flowers. Not hardy in Minnesota. 4–8”h

See more THYME, pages 40 and 41

H137 Turmeric *Curcuma domestica*

Upright, fragrant bright green leaves. This relative of ginger has orange rhizomes, which are the source of the orange-yellow spice often used in curries. Harvest the root in fall. Leaves can be used as a green vegetable. Not winter hardy in Minnesota; grow as an annual or bring inside to winter as dry pot. 24–36”h ○🍷🌿
\$9.00—5.25” pot

H138 Vanilla Grass *Anthoxanthum odoratum*

Great for potpourri. A European bunchgrass that will establish readily in areas of poor fertility. The scent of this grass made it popular as bedding straw. Widely naturalized in North America. Perennial and spreading. 12–24”h ○
\$3.00—2.5” pot

H139 Vietnamese Balm *Elsholtzia ciliata*

In Vietnamese cuisine, this lemony herb is called “rau kinh gioi” and is among the leafy herbs served with soups and grilled meats. Pale purple flowers bloom in flat spikes in fall. Spreads by both seed and rhizomes. Treat as an annual. 24”h ○🍷
\$3.00—3.5” pot

H140 Vietnamese Coriander 🍷 *Persicaria odorata*

The leaf is dark green with a maroon “V” and has a strong cilantro-like fragrance and a slightly peppery taste. It’s eaten fresh in Vietnamese cuisine for salads and raw summer rolls, as well as in some soups and stews. Moist soil. Tender perennial; won’t go to seed quickly like cilantro. Also called “rau ram.” 24–36”h ○🍷🌿
\$3.00—3.5” pot

H141 Weld *Reseda luteola* 🍷 **NEW**

Traditional European source of color-fast bright yellow dyes. The biennial plant forms a low rosette of leaves the first year, then sends up a tall stalk with fragrant yellow-green flowers the second year. Often planted around outhouses where its powerfully sweet aroma masked other odors. Harvest the entire plant as flowers fade for the dye. Can be combined with woad or indigo to produce green dye and madder to produce orange. 48–60”h ○🍷🌿
\$6.00—6 plants in a pack

H142 Woad *Isatis tinctoria* 🍷 **NEW**

Traditional and only source of lightfast blue dye in Europe before indigo began to be imported. Harvest its best dye-producing leaves during the plant’s first year when it forms a leafy rosette close to the ground. A biennial or short-lived perennial, it will send up a flower spike in its second year, bloom, and produce numerous seeds. The 36–60” taproot makes the plant hard to eradicate once established. Considered a noxious weed in several western states, so remove the plant before its first winter and before it sets seed. 12–36”h ○🍷
\$6.00—6 plants in a pack

H143 Yerba Mate *Ilex paraguariensis*

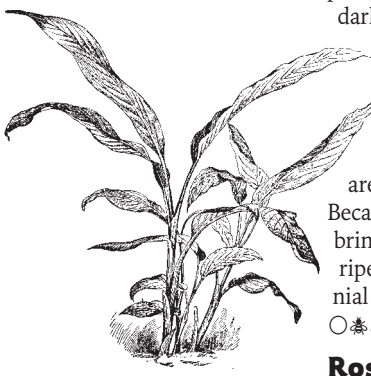
Grown for its glossy leaves, which are dried to make yerba mate, the most common tea in South America. Slow-growing broadleaf evergreen tree to 50’ in its native Central and South America, but even 12’ is optimistic in Minnesota. Bring indoors well before winter and grow on a sunny windowsill in a warm (above 60°F), humid environment. 12”h ○🍷
\$13.00—4” pot

BYO Crates, Boxes, Bins

Enter to win prizes*—
1 free ticket for each container

See a Welcome Ambassador or visit the Zero Waste Tent in the Garden Fair to enter.

*Details on page 29



Turmeric



Woad

Certified-Organic Herbs at the Sale



Every one of the plants in the Herbs section is grown without chemical pesticides or herbicides, and from greenhouses operated with sustainable practices. We also carry a more limited line of certified-organic herbs, marked with our organic icon. Some are seeds. At customer request, here’s a summary of those:

Basil H004 Sweet Genovese, Aroma H009 Thai	Other herbs H031 Cilantro H036 Dill, Greensleeves	H093 Oregano, Greek H097 Parsley, Curly H099 Parsley, Italian H131 Thyme, English
---	---	--

