

We accept checks, cash, Amex, Visa, MasterCard, Discover, and Apple Pay

Annuals

Key

- Full sun
- ◐ Part sun/part shade
- Shade
- 🐝 Attractive to bees
- 🦉 Audubon-endorsed
- 🦋 Butterfly-friendly
- 🐦 Hummingbird-friendly

- 🌿 Attractive foliage
- 🍷 Culinary
- 🌸 Edible flowers
- 🌱 Ground cover
- 🏠 Houseplant
- 🍵 Medicinal
- 🏡 Minnesota native
- 🪨 Rock garden

- 🌡️ Cold-sensitive: keep above 40°F
- ☹️ Toxic to humans
- 🔄 Saturday restock

True annuals grow from seed, bloom, set new seed, and die all in a single year. Many plants in this section are nonhardy (or “tender”) perennials that cannot survive the winter in Minnesota, so we treat them as annuals.

Alyssum, Sweet *Lobularia maritima*

Forms a thick carpet of small flowers, so wonderfully fragrant that it is well worth stooping to smell them. Perfect for edging or over-hanging a sunny wall. A good nectar plant for beneficial insects. Cut back to encourage follow-up bloom. Easy to grow. Good in containers. 3–5”h by 10”w ○🐝🌿

\$3.00—4 plants in a pack:

- A044 **Easter Basket Mix** 🌸—Pink, purple, or white.
- A045 **Snow Crystals** 🌸—Lovely spreading clumps of fragrant white.
- A046 **Violet** 🌸
- A047 **Wonderland Deep Rose** (NEW) 🌸—Shades of pink. The cooler the weather, the more saturated the color.

A048 **Angel’s Trumpet** 🌸

Datura metel Double Golden Yellow

Fully double (or even triple!) ruffled gold 7” trumpets. Fragrant. Bushy plant. Give it plenty of space. 30–36”h ○🌿☹️

\$7.00—3.5” pot

Angelonia *Angelonia angustifolia*

Great garden performer, thriving in heat and wet or dry conditions. Beautiful 1” flowers like tiny snapdragons late spring to late summer smell like grape soda. Narrow 3” leaves. Excellent in containers and good for cut flowers. Deer- and rabbit-resistant. From Mexico and the West Indies. Easy. ○○

\$6.00—4” pot:

- A049 **Archangel Dark Rose** 🌸—Spikes of rose to hot pink speckled with darker pink. 12–14”h
- A050 **Serena Purple Improved** 🌸—Slender 8” spikes of purple flowers with a small white mark. 12–20”h

A051 **Artichoke, Globe** 🌸

Cynara scolymus Imperial Star

A special variety for northern gardens. Don’t harvest the buds, which are edible—let them bloom. The otherworldly purple flowers are worth the sacrifice. Striking architectural plant. 48”h ○🍷🌿

\$3.00—3.5” pot

Aster, Annual *Callistephus*

Fully double flowers bloom from August to frost. Long-lasting cut flower. Deer-resistant. ○●🌿

\$3.00—4 plants in a pack:

- A052 **Color Carpet Mix** 🌸—Mix of purple, pink, red, and white 3–4” flowers. 8”h
- A053 **Tower Chamois** *C. chinensis* 🌸—Light peach 2–3” flowers with incurved petals like a double peony. 28–32”h

A054 **Baby Blue Eyes** 🌸

Nemophila menziesii Penny Black

Penny-sized, saucer-shaped dark purple flowers have scalloped white edges. From spring to August, these bouncy, dainty flowers cover the compact, feathery foliage. Appreciates afternoon shade or dappled shade: its botanical name means it loves the woodland. Grows quickly. Self-seeds. West coast native. 4–8”h ○🌿

\$3.00—4 plants in a pack

Bachelor’s Buttons *Centaurea*

Daisies with fringed petals make ideal cut flowers. Easy. Only the petals are edible. ○●🐝

\$3.00—4 plants in a pack:

- A055 **Blue Boy** *C. cyanus* 🌸—Intense blue with a hint of lavender. Double. 30”h

\$5.00—6 plants in a pack:

- A056 **Classic Magic Mix** 🌸—A mix of single and double bicolored flowers from lavender to almost-black to purple frosted with white. 24–36”h 🌿
- A057 **Midnight** *C. cyanus* 🌸—Fluffy doubles are nearly black. 36”h



Bachelor’s buttons

Bacopa *Sutera cordata*

Many small, five-petaled flowers. Trailing, great for containers. Blooms most heavily in cooler weather, will flourish again in the fall after a trim. Drought-tolerant and needs no deadheading. ○●

\$4.00—3.5” pot:

- A058 **Snowtopia White** (NEW) 🌸—Loaded with white flowers. 4–6”h by 18”w

\$6.00—4” pot:

- A059 **Pink Halo** 🌸—Pink flowers with darker pink centers. 4–9”h by 14–18”w

A060 **Bacopa, Stardom** 🌸

Jamesbrittenia Goldstar

Open-faced 1” yellow flowers with rusty orange centers. Blooms in a mound all summer. 6–8”h by 10–14”w ○

\$6.00—4” pot

A061 **Balsam** 🌸

Impatiens balsamina Camellia Mix

Shades of white, pink, red, salmon, and violet. Old-fashioned double flowers. Likes plentiful moisture but also requires excellent drainage. Yummy edible greens are used in dishes such as curry. Excellent source of calcium and vitamins A and C. Will self-seed from its exploding seed pods. 18”h ○🍷🌿☹️

\$3.00—4 plants in a pack

Outdoor/Indoor Plants 🌡️

Many “tender” perennials, shrubs, and trees that can’t survive our Minnesota winters can be used as colorful or tropical-looking annuals, or they can be brought indoors in fall. The plants in the Outdoor/Indoor section do well in containers either as houseplants 🏠 or kept under lights in a cool room or basement.

Heights are given when possible, but often depend on the size of the container the plant is in and how many years it is over-wintered indoors. Some of these plants are large now or can grow quite large. Other tender plants are listed in the main Annuals section, Miniatures & Succulents, or Unusual & Rare.

Angel’s Trumpet *Brugmansia*

Huge, dangling trumpets are usually sweetly scented. Blooming begins when the plant is close to full height, requiring regular feeding and patience, even though the plant grows fast. Prefers to be planted in the ground for the summer, then in a tub indoors to over-winter as a tender woody tropical bush. ○●☹️

\$44.00—2 gal. pot:

- A001 **Marshmallow Sunset**—White flowers have double or triple ruffled trumpets (one inside the other) with long curly extensions. Cooler temperatures in fall cause orange and gold highlights to emerge. Lemony scent. 48–72”h
- A002 **Peach**—Orange yellow flowers are 8” long and 6” wide where they flare out. 60–72”h

Banana *Musa*

Give your garden or patio that tropical look. A banana plant will over-winter in a very sunny window or dormant in a cool, dark basement. Let us know if you get bananas. ○🌿

\$15.00—6” pot:

- A003 **Siam Ruby** 🌸—No other banana plant has foliage like this. Each leaf has a surprising new pattern of ruby red (almost burgundy) and lime green flecks, streaks, and sections. Some leaves are half red and half green. Baby plants are all yellowish green and develop more red as they mature and get more sun. 48–72”h
- A004 **Truly Tiny** 🌸—The smallest variety, with edible 1–2” sweet bananas. Leaves are splashed with burgundy. Grow in a container, fertilize regularly, water well, keep warm, and provide lots of bright light when it’s indoors. 24”h by 48”w

A005 **Banana, Abyssinian** 🌸

Ensete ventricosum Maurelii

Dark green leaves flushed with burgundy-red, especially in the new growth and when in full sun. Winters well in the house. Does not like to dry out. 72–84”h ○●🌿

\$15.00—6” pot

Begonia *Begonia*

Happy in gardens as well as containers or hanging baskets, and over-winter indoors. 🌿🍷☹️

\$7.00—3.5” pot:

- A006 **Art Hodas**—Very large, textured, velvety red leaves. Wonderful for larger shaded containers or window boxes. Dainty white flowers a foot above the leaves in late fall or winter. 24”h ○●

Begonia continued

\$7.00—5.25” pot:

- A007 **Gryphon** 🌸—Deeply cut black foliage is lined and marbled with shiny silver. Copper flower spikes. Enjoys being outside for the summer. 14–36”h ○●
- A008 **Looking Glass** 🌸—Silvery leaves up to 12” long with wide olive green veins. New leaves emerge reddish pink and the backs of the mature leaves are burgundy-red. Pink flowers in clusters. This upright angelwing hybrid grows quickly. 12–24”h ○

Begonia, Rex *Begonia*

Grown for the foliage. An excellent houseplant.

○●🌿🍷☹️

\$11.00—6” pot:

- A009 **Bewitched** 🌸—An assortment of five colors in the Bewitched series with silvers, reds, and purples. 12–16”h
- A010 **Escargot** 🌸—Deeply spiraled leaves marked in bands of silver and green curl in on themselves like the shell of a snail. 6–12”h

See more BEGONIAS, page 21

A011 **Calla** (NEW)

Zantedeschia Sun Club

Large yellow flowers with lightly spotted foliage. Elegant sculptural flowers and large arrowhead-like leaves. Suitable for summer containers. Keep moist. 18–22”h ○●

\$16.00—5.25” pot

A012 **Ferns, Assorted** 🌿

Your choice of ferns ideal for shady containers or to use as houseplants. See tags for heights and growing guidelines. Tropical ferns were popular houseplants in Victorian times. Happy outdoors for the summer in low light, they are easy to over-winter indoors with good humidity. ○●🍷

\$6.00—4” pot

A013 **Fern, Australian Tree**

Cyathea australis

Classic fern-shaped leaves that grow at the top of a furry, woody “trunk.” Requires consistently moist soil, so water when the first inch or so of the soil has dried out. It is a heavy feeder, so don’t forget to fertilize. Give it the brightest indirect light you can. 72”h ○●🍷

\$8.00—5.25” pot

BOX CONTINUES ON PAGE 21

Plants marked with  are especially good for bees

Our mission is to prepare children to embrace life, learning, and community with hope, skill, understanding and creativity.

Thank You for Supporting Our School

Friends School OF MINNESOTA 

Annuals



We accept checks, cash, Amex, Visa, MasterCard, Discover, and Apple Pay



The little truck means we'll be restocking this plant on Saturday morning.



Double calendula

A080 **Bidens** 🌿

Bidens Spicy Electric White
Petals blend from yellow near the center to white at the tips. A good mingler covered with small carefree daisies summer through fall. Deer-resistant and drought-tolerant. 12–14" h 🌞☔🌿 \$6.00—4" pot

A081 **Billy Buttons** 🌿

Craspedia globosa Golf Beauty
Minnesota State Fair regulars will appreciate the novelty of this flower-ball-on-a-stick. The 1–2" yellow ball is actually an array of tiny flowers, as if the center of a daisy was formed into a sphere. Slender stalks hold these balls high above silvery, grassy leaves. The dried flowers keep their color up to a year. Native to Australia, New Zealand, and Tasmania. Also called drumstick plant. 12–24" h 🌞☔ \$6.00—4" pot

Black-Eyed Susan *Rudbeckia hirta*

Intriguing varieties that are not reliably hardy here in Minnesota, so we treat them as annuals, although they may give a repeat performance next year. Great for cut flowers. Also called gloriosa daisy. See more Black-Eyed Susans in Perennials and Native Perennials. 🌞🌱☔

\$5.00—6 plants in a pack:

A082 **Cherokee Sunset** 🌿—Double or semi-double 3–4" flowers in yellow, orange, bronze, and mahogany. 24–30" h 🌿

A083 **Chim Chiminee** 🌿—Semi-double 4–6" flowers in a range of colors from yellow to gold to orange to mahogany, July–September. Narrow rolled petals surround a central brown cone. May self-seed. 18–24" h

See more BLACK-EYED SUSANS, pages 31 and 52

A084 **Blue Lace Flower** 🌿

Didiscus caeruleus Lacy Blue
Small, round-petaled lavender-blue flowers cluster together in 3" domes like Queen Anne's lace blossoms. Slight sweet fragrance. Blooms summer to frost. Silvery, feathery leaves. Lasts seven to 10 days in a vase. Well-drained soil. Introduced from Australia in 1828. Also known as *Trachymene caerulea*. 24–28" h by 10" w 🌞☔🌿 \$5.00—6 plants in a pack

A085 **Blue Wax Flower** 🌿

Cerithe major purpurascens Pride of Gibraltar
Oval bluish green leaves look almost succulent and are slightly marbled when new. As they spiral up arching stems, the leaves turn themselves into blue and purple petal-like bracts that closely wrap around dangling, nectar-rich purple bell flowers. Cooler autumn nights encourage a deeper blue. Easy, although it is not fond of being transplanted. Long-lasting as cut flowers and deer-resistant. The name *Cerithe* comes from the Greek "keros" meaning "wax" and "anthos" meaning "flower." It was thought that bees collected wax for their honeycombs from the plant. May self-seed. Also known as blue shrimp plant and honeywort. 12–36" h 🌞🌱☔ \$3.00—3.5" pot

A086 **Bush Violet** 🌿

Browallia speciosa Blue Bells
Bluish purple 1–2" flowers with white centers and dark veining. Easy to grow in containers or hanging baskets. Blooms midsummer to fall. May rebloom if overwintered indoors. Prefers light shade. 10–12" h 🌞🌱☔ \$3.00—4 plants in a pack

Butterfly Flower *Asclepias curassavica*

Strong stems hold up umbels of brightly colored flowers very attractive to butterflies. Excellent cut flowers. From South America. 28–40" h 🌞🌱☔

\$5.00—6 plants in a pack:

A087 **Silky Deep Red** 🌿—Dark red with gold.

A088 **Silky Gold** 🌿—Orange yellow.

See also MILKWEED, page 55

A089 **Cabbage, Ornamental** 🌿

Brassica oleracea Glamour Red
Dark blue-green leaves with a magenta center. Glossy leaves instead of the usual waxy finish. Beautiful from spring onwards. Colorful, easy plants last into winter. Brightest color in full sun and when the nights are cool. Edible, too! 12" h 🌞🌱☔ \$3.00—4 plants in a pack

Coleus solenostemon scutellarioides

Coleus come in a wide variety of leaf colors and shapes. Easy to grow, propagate from cuttings, and over-winter. Fun to mix and match with flowers and other coleus varieties. 🌿🌱☔

For Shade 🌞🌱☔

Colorful leaves bring some excitement to a partly shady or shady corner.

A100 **Fairway Mix** 🌿—Chartreuse, red, rusty orange, burgundy, and magenta in several patterns. 8–10" h

\$3.00—4 plants in a pack

A101 **Kong Mosaic** 🌿—Each leaf flaunts a unique pattern of green, red, and cream. 22" h 🌿

\$6.00—4.5" pot

A102 **Kong Red** 🌿—Extremely large leaves. Performs best in full shade. 22" h

\$6.00—4.5" pot

A103 **Kong Rose** 🌿—Extremely large leaves. 22" h

\$6.00—4.5" pot

A104 **Tidbits Tammy** 🌿—Ruffled columns of small burgundy leaves with lobed chartreuse margins. Bring it indoors for the winter to see its full height. Well-behaved and compact, its small leaves can make a colorful tree or shrub in the miniature garden. 8–18" h

\$6.00—4" pot

A105 **Wizard Jade** 🌿—Heart-shaped leaves are ivory with green margins. 12–14" h 🌿

\$3.00—4 plants in a pack

A106 **Wizard Scarlet** 🌿—Red with yellow edges. 12–14" h

\$3.00—4 plants in a pack

A107 **Wizard Sunset** 🌿—Large apricot-red leaves, heart-shaped with gold scalloped edges. 12–14" h 🌿

\$3.00—4 plants in a pack

A108 **Wizard Velvet Red** 🌿—Burgundy red with darker markings and thin green margins. 10–14" h 🌿

\$3.00—4 plants in a pack

For Sun 🌞🌱☔

These varieties enjoy sun, often with more vivid colors with more sun.

A109 **Black Dragon** 🌿—Large red, lobed leaves with purple-black edges. Compact. 10–14" h

\$3.00—4 plants in a pack

A110 **Copperhead** 🌿—Lightly ruffled burgundy leaves have jagged yellow to light green edges and long pointed tips. 14–26" h by 14–16" w

\$6.00—4" pot

A111 **Dark Heart** 🌿—Somewhat heart-shaped leaves are burgundy-purple with yellow-green margins. 18–24" h by 12–15" w

\$6.00—4" pot

A112 **Electric Lime** 🌿—Yellowish green puckered leaves with scalloped edges and numerous near-yellow veins. Holds color well in full sun, but appreciates a bit of shade in the afternoon. 14–20" h

\$6.00—4" pot

A113 **Electric Slide** 🌿—Cheerful yellow leaves emerge with a scalloped apple green edge, then a network of lacy red veins spreads over the yellow background. 23" h by 36" w

\$6.00—4" pot

A114 **Fancy Feathers Black** 🌿—Dark purple with magenta and green splashes. Long, narrow leaves grow quickly into a lively little mop of foliage. 4–8" h

\$6.00—4" pot

A115 **Fancy Feathers Copper** 🌿—Blended shades of apricot, gold, and rust. Like most of the "copper" coleus, it's purple-pink at the base of the leaf, so it looks great with hot pink flowers. Long, narrow leaves grow quickly into a lively little mop of foliage. 4" h by 8" w

\$6.00—4" pot

A116 **FlameThrower Salsa Roja** 🌿—Jagged narrow leaves are burgundy rust outlined in yellow-green. 12–18" h by 16–18" w

\$6.00—4" pot

A117 **Gay's Delight** 🌿—Bright greenish yellow leaves with scalloped edges and purple-burgundy veins. 18–30" h

\$6.00—4" pot

A118 **Great Falls Niagara** **NEW** 🌿—Small, scalloped burgundy leaves with yellow-green margins. Resists blooming. Semi-trailing. 8–12" h by 12–18" w 🌿

\$6.00—4" pot

A119 **Heartbreaker** **NEW** 🌿—Broad burgundy leaves with a hot pink center, patterned green margins, and scalloped edges. Bold and showy.

\$6.00—4" pot

A120 **Inferno** 🌿—Rusty orange leaves with a pinkish haze and undersides make an unusual color echo for orange or pink flowers. Edges are serrated and may acquire a fine yellow margin with age. Slow to bloom. Keeps its foliage color in part shade. 12–24" h

\$6.00—4" pot

A121 **Le Freak** 🌿—Narrow burgundy leaves with randomly toothed yellow-green edges. In more shade, leaves are purplish and green. Forms a shaggy mound. 12–18" h

\$6.00—4" pot

A122 **Main Street Beale Street** 🌿—Deep red leaves with toothed edges on a bushy upright plant. Slow to bloom. Became the first coleus AAS ornamental winner in 2020. 24–36" h

\$6.00—4" pot

A123 **Main Street Bourbon Street** **NEW** 🌿—Strongly serrated leaves with pointy tips are deep burgundy outlined with green. 18–36" h by 12–24" w

\$6.00—4" pot

A124 **Main Street Orchard Road** 🌿—Purple-burgundy leaves have lacy, spotty green margins and a magenta central blaze. Scalloped edges. 18–24" h

\$6.00—4" pot

A125 **Mainstreet Sunset Boulevard** 🌿—Bronze leaves with hot pink centers, magenta veins, and scalloped green edges. 20–30" h

\$6.00—4" pot

A126 **MicroBlaze Matchsticks** **NEW** 🌿—Petite, scalloped burgundy leaves are pink at the base with green margins. Nice mounding filler for a container. 12–18" h

\$6.00—4" pot

A127 **Orange King** 🌿—Wide yellow-green leaves whose veins, toothed edges, and undersides are burgundy-magenta. New growth is orangish. From a distance the plant's color is amber or yellow ochre. Leaves are greener in shade. Also known as Gold Giant. 18–30" h

\$6.00—4" pot

A128 **Party Time Pink Fizz** **NEW** 🌿—Hot pink dominates the centers of the jagged, elongated burgundy leaves. Lime-green edges. 16–18" w

\$6.00—4" pot

A129 **Peter's Wonder** 🌿—Frilly, deeply toothed green and cream leaves with magenta outlining. The base of each leaf has a splash of magenta and the reverse is violet with magenta veins. An upright plant that looks really nice with hostas. 15–20" h

\$6.00—4" pot

A130 **Shiny Shoes** 🌿—Small near-black leaves are thick and almost heart-shaped with a pebbly, glossy surface and scalloped edges. Looks very much like a dark purple shiso (*Perilla frutescens*). Rarely blooms. Also known as patent leather coleus. 22–24" h by 6–8" w

\$6.00—4" pot

A131 **Stained Glassworks Velvet** **NEW** 🌿—Yellow-green leaves with patterned burgundy margins and lightly scalloped edges. 12–36" h

\$6.00—4" pot

A132 **TrailBlazer Road Trip** **NEW** 🌿—Vigorous trailing plant with scalloped, rounded burgundy leaves outlined in green with a hot pink blaze in the center. 6–10" h by 18–24" w

\$6.00—4" pot

A133 **Vino**—Serrated, pointed, deep burgundy-purple leaves (darkest in full sun) outlined with fine lime green. Vigorous and upright. 18–30" h

\$6.00—4" pot



Annuals

Plant widths are similar to their heights unless noted otherwise.

A098 **Cigar Flower** **NEW**
Cuphea Honeybells

One-inch pinkish red flowers with light yellow tips. Semi-trailing, extra-floriferous hybrid. Small, tubular flowers are especially attractive to hummingbirds. Very heat-tolerant, and needs no deadheading. 12”h by 20”w **\$6.00—4” pot**

A099 **Cockscomb**
Celosia argentea cristata Amigo Mix

Velvety red, fuchsia, pink, or yellow. Fan-shaped flower heads have a convoluted, crumpled look like brain coral. Grown for cut flowers. Drought-tolerant and easy. Leaves are edible like spinach. 6”h **\$3.00—4 plants in a pack**



Cockscomb

Coleus see box, page 22

Cosmos Cosmos

Graceful, yellow-centered daisies bloom all summer. Lacy foliage. Great next to a hot alley, tolerating part shade, lean or sandy soil, and neglect. Easy and quick to bloom; may self-seed. Excellent cut flowers.

\$3.00—seed packet:

A134 **Bright Lights Mix** *C. sulphureus*—Semi-double 2–3” flowers in many shades of yellow, orange, and red. 36”h by 14–16”w

A135 **Sensation Mix** *C. bipinnatus*—Semi-double pink, dark magenta, and white 4–6” flowers. 36–48”h

\$3.50—seed packet:

A136 **Fizzy White** *C. bipinnatus*—Double and semi-double 2–4” white flowers. 36”h by 18–24”w

Cosmos continued

\$3.00—4 plants in a pack:

A137 **Apricot Lemonade** *C. bipinnatus* —Light apricot petals with a lavender-pink reverse turn butter yellow. Each flower is a bit different and some have a pink ring at the center or look air-brushed with pink. Sturdy, upright, bushy plants. 20–30”h

A138 **Cosmic Mix** *C. sulphureus* —Double and semi-double 2” flowers in shades of orange, red, and yellow. 12–18”h

A139 **Sea Shells Mix** *C. bipinnatus* —Charming mix of white, pink, rose, and crimson 3” flowers with petals that curl up at the edges to form tubes or cones. 36–48”h

\$5.00—6 plants in a pack:

A140 **Cosimo Dancing Dolls** *C. bipinnatus* —White and pink brush marks on dark magenta petals. No two flowers are alike. 24–36”h

A141 **Cupcakes and Saucers Mix** *C. bipinnatus* —Unique variety in which the individual petals of a classic cosmos have merged together to form a delicate-looking bowl with a scalloped edge. Some flowers in this white, pink, and pink-blushed mix have a rose eye and some have extra frilly petals around their gold centers. Easy to grow and stands up to rain. 24–30”h

A142 **Diablo** *C. sulphureus* —Semi-double red or orange petals are brushed with gold. Save the seeds for next year. 48–60”h

A143 **Double Click Cranberries** *C. bipinnatus* —Bred in France for cutting gardens. Deep carmine, ruffled, mostly double flowers with gold centers. 36–42”h

A144 **Double Click Mix** *C. bipinnatus* —Large, frilly, double and semi-double flowers in rosy red, pink, and white with golden centers. 48”h

A145 **Rosetta** *C. bipinnatus* —Brushed and striped with shades of pink, many of these 4” flowers have an extra layer of short petals sprinkled around the center. 25–30”h by 18–20”w

Cosmos continued

\$5.00—6 plants in a pack (continued):

A146 **Xanthos** *C. bipinnatus* —Early-blooming 2.5” yellow daisies with lighter edges, a new color for cosmos. “Xanthos” means “yellow” in Greek. 20–25”h

A147 **Xenia** *C. bipinnatus* —Rosy pink 2.5” daisies with peach tones in each petal that become more prominent in less light and as the flower ages. June–September. 18–24”h

A148 **Cosmos, Chocolate**
Cosmos Chocamocha

Chocolate-scented brownish red 1.5” daisies with dark gold centers. Late summer bloom. Known to gardeners since the 1880s. Tuberous roots can be over-wintered in a cool storage area. 10–18”h **\$6.00—4” pot**

A149 **Cotton, Red-Leaf** *Gossypium hirsutum*

Three- to five-lobed leaves emerge green, then become increasingly washed with burgundy. In late summer, deep pink and cream 2” flowers unroll from large, fringed burgundy buds on dark red stems. Whorled, hibiscus-like flowers may become fluffy cotton in fall if given lots of sun, heat, and rich soil. 24–48”h **\$6.00—4” pot**

A150 **Creeping Zinnia**
Sanvitalia Queen of Sunlight

Penny-size yellow flowers with green centers. More mounded than spreading. Blooms June to frost. Mini-daisies trail from a hanging basket or form mats when planted in the ground. 12–18”h by 12–18”w **\$3.00—4 plants in a pack**

Dahlia see box, page 24

Key

- Full sun
- Part sun/part shade
- Shade

- Attractive to bees
- Audubon-endorsed
- Butterfly-friendly
- Hummingbird-friendly

- Attractive foliage
- Culinary
- Edible flowers
- Ground cover
- Houseplant
- Medicinal
- Minnesota native
- Rock garden

Cold-sensitive: keep above 40°F

Toxic to humans

Saturday restock



Cosmos



Students at the Plant Sale

Hi! We are the Friends School of Minnesota Plant Sale student representatives this year.

Students have been working at the plant sale since it started in 1989 and will be working at the upcoming sale this year!

Before the sale starts, students help spread the word by helping to distribute catalogs, but our roles don’t end there. Every year during the week leading up to the sale, all of the middle school students gather at the Minnesota State Fair grounds to help set up the sale. We help unload the trucks and get all of the plants onto the benches. As student representatives, it is our job to brief our classmates on certain areas of the sale.

Every student also works the first Friday of the Plant Sale.

Working at the sale is a chance for kids to be pushed out of their comfort zones and learn about real world

work and customer service in a way that isn’t possible at other schools.

The Friends School Plant Sale brings people together. As students, we have come to appreciate having our middle school involved at each sale, especially after the pandemic. It is an incredible opportunity for students and shoppers to interact and create community. A sense of community has felt increasingly vital in the past few years.

We also always remember how the sale helps our school. The money from the plant sale goes to the school and produces opportunities for Friends School students. The sale aligns with the Quaker values taught at our school—values such as simplicity, stewardship, and community.

“Working at the sale is a chance for kids to be pushed out of their comfort zones and learn about real-world work and customer service.”

Thank you for supporting our sale and our school. See you at the plant sale!

—the 7th and 8th grade student representatives

Edward Lear’s Nonsense Botany

Between 1872 and 1877, the English artist and writer Edward Lear created whimsical drawings of imaginary plants with pseudo-Latin names.

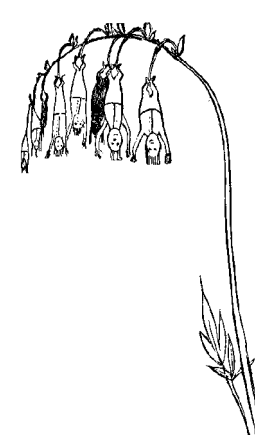
They were published in 1888, after his death. Lear’s “Nonsense Botany” is not as well known as it should be, so we thought we would share some of his images.

Lear was one of the earliest paid illustrators, and is possibly the first person to publish illustrations of birds drawn from live birds. He did all this, and a lot of other work, while living with epilepsy, severe depression, partial blindness, and other health issues.

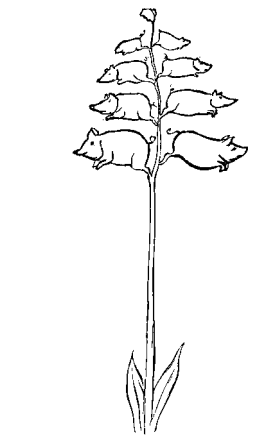
He is best known for his illustrated nonsense poem “The Owl and the Pussycat.”



Tigerlillia terribilis



Manypeeplia upsidownia



Piggiwiggia pyramidalis



Barkia howlaloudia



Queeriflora babyoides



Puffia leatherbellowsa



Enkoopia chicabiddia



Bottlephorkia spoonifolia



Shoebotia utilis



Annuals

Key

- Full sun
- ◐ Part sun/part shade
- Shade
- 🐝 Attractive to bees
- 🐦 Audubon-endorsed
- 🦋 Butterfly-friendly
- 👉 Hummingbird-friendly
- 🌿 Attractive foliage
- 🍷 Culinary
- 🌸 Edible flowers
- 🌱 Ground cover
- 🏠 Houseplant
- 🩹 Medicinal
- 🌳 Minnesota native
- 🪨 Rock garden
- ❄️ Cold-sensitive: keep above 40°F
- ☠️ Toxic to humans
- 🔄 Saturday restock

- A176 **Daisy, Dahlberg** 🌿
Thymophylla tenuiloba Shooting Star
Deeply divided, feathery leaves and a profusion of tiny yellow daisy flowers. The leaves have a pungent, lemony odor when crushed. Can be planted in rock gardens or in pockets among paving stones or patio blocks. It makes a great edging plant for well-drained sunny areas. Trailing. 6–12”h ○🐝🦋
\$5.00—6 plants in a pack
- A177 **Daisy, Gerbera** 🌿
Gerbera
Red, orange, pink, white, or yellow. Your choice of fun daisies. Picking the flowers encourages new growth, but twist the stems off at the base rather than cutting them. Fertilize regularly and don’t over-water. 8”h ○🌱
\$7.00—4” pot
- A178 **Daisy, Snowland** 🌿
Chrysanthemum paludosum
A profusion of cute white daisies with bright yellow centers. Good edging plant. 8–12”h ○🌱
\$3.00—4 plants in a pack
- Dusty Miller**
Classic garden edging with silver foliage. Excellent accent paired with dark foliage. ○🌱
\$3.00—4 plants in a pack:
- A179 **Silver Dust** *Senecio cineraria* 🌿—Soft and finely cut foliage. 10–12”h ○
\$6.00—4” pot:
- A180 **Makana Silver** *Artemisia mauiensis* 🌿—Fast-growing, drought-tolerant mounds of soft, feathery white plumes. Deer-resistant. From Hawaii. 24”h 🐝🌱
\$6.00—4” pot:

- Egyptian Star Clusters** *Pentas lanceolata*
Many star-shaped flowers on upright plants. Long-blooming in heat and humidity. The botanical name comes from the flower’s five petals. Formerly listed as *Pentas*. ○🌱🦋
\$4.00—3.5” pot:
- A181 **Glitterati Purple Star**—Each flower looks like a white star outlined with pinkish purple. 12–22”h
\$6.00—4” pot:
- A182 **Starcluster White** 🌱—White flowers. Visited by hummingbirds at Longfellow Gardens. 18–22”h 🦋
- A183 **Elegant Feather** 🌿
Eupatorium capillifolium
Narrow columns of wispy foliage grow quickly straight up from the base to full height in one short Minnesota season, but without any support or staking. Filament-like leaves catch every breeze like a graceful ornamental grass. Both airy and architectural. Your garden visitors will want to know what this uncommonly silky “shrub” is. No need to tell them the wild species is a terrible weed in the South. This cultivar does not self-seed. In early fall, the stems redden and tiny pale pink flowers bloom so abundantly they resemble frost. 48–84”h ○🌱
\$6.00—4” pot
- A184 **Fan Flower** 🌿
Scaevola aemula Brilliant
Purple flowers are shaped like a lady’s fan, arranged around trailing stems. Blooms prolifically all season with no deadheading. Heat- and drought-tolerant. Popular with native bees. 6–14”h ○🐝 \$6.00—4” pot

- Flame Flower** *Celosia argentea plumosa*
Glowing plumes make great dried flowers. Leaves are edible like spinach. Drought-tolerant. 14–16”h ○🐝🌱
\$3.00—4 plants in a pack:
- A185 **Castle Mix** 🌿—Scarlet, pink, yellow, and orange.
- A186 **Chinatown** 🌿—Scarlet flowers on dark green to bronze foliage. A knock-out.
- A187 **Flamingo Flower** 🌿 **NEW**
Celosia Kelos Atomic Violet
Deep magenta spikes with burgundy tips. Pointy leaves are tinted purple at the margins at first, then purple suffuses the leaves. Can be grown inside on a sunny windowsill. Blooms midsummer–fall. Good cut flowers on trouble-free plants. Dries well; drought- and heat-tolerant. Peru native. Leaves are edible like spinach. 18”h by 16–24”w ○🐝🌱
\$6.00—4” pot
- Floss Flower** *Ageratum*
Fuzzy flower heads in attractive clusters. Easy to grow. Seeds eaten by finches. Heat- and drought-tolerant. ○🌱🦋
\$6.00—4” pot:
- A188 **Bumble Blue** 🌱 **NEW** 🌿—Vigorous, with long-lasting summer flowers of bluish lavender. 8–12”h
- A189 **Bumble Rose** 🌿—Pink with deeper pink centers. 8–12”h 🦋

- Four O’Clocks** *Mirabilis*
Trumpet flowers open daily. Blooms from late spring to early fall. Tender, perennial that can be dug and stored over the winter, or may survive next to a heated foundation. ○🌱🦋🌱🌱
\$5.00—6 plants in a pack:
- A190 **Harlequin Mix** 🌿—Stripes and streaks on showy flowers. 24”h
\$6.00—4” pot:
- A191 **Limelight** 🌿—Vivid fuchsia flowers and bright chartreuse foliage speckled with deep green flecks. 24”h

- Fuchsia** *Fuchsia*
Bright colors for low-light areas. Can be over-wintered indoors, where they bloom well. ○●
\$6.00—4” pot:
- A192 **Aurea F. magellanica** 🌿—Small, pointed leaves on arching stems begin gold-yellow, turning chartreuse with age and more shade. Experiment to find the exposure that keeps foliage the color you want. Stems and leaf veins become increasingly magenta-red. From early summer through fall, 2” red-magenta and purple flowers dangle along the stems. Plant it where it can cascade. 6–18”h by 24–36”w
- A193 **Autumnale**—Red and purple flowers and trailing golden leaves flushed with purple and orange. Blooms early and all summer long, keeping the hummingbirds happy. 6–18”h 🦋🌱
- A194 **Marinka** 🌿—Magenta and dark magenta flowers, trailing and down-facing. Great for window boxes or the garden. 12”h
\$6.00—4.5” pot:
- A195 **Shadow Dancer Marcia** 🌿—Red and purple. 18–24”h
- \$7.00—5.25” pot:
- A196 **Firecracker** 🌿—Foliage of green and cream with crimson veins and crimson undersides. Salmon orange flowers. 18–24”h 🦋🌱
- A197 **Gartenmeister** 🌿—Dangling, continuous coral-pink to salmon flowers. Upright plants with dark stems and purple-veined leaves. 18–24”h 🦋

- A198 **Gaura** 🌿
Gaura lindheimeri Belleza Dark Pink
Neat, compact plant with red stems and buds that open to a waving display of beautiful pink flowers. Airy texture. Lovely mingling with traditional cottage garden flowers or in a container alongside burgundy or pinkish foliage. They look delicate, but are tough plants that continue blooming lightly if brought inside for the winter. 18”h ○
\$6.00—4” pot

- Geranium** *Pelargonium*
Bushy plants with thick stems, often with multi-colored leaves. Bring indoors for the winter. ○🌱🌱
\$6.00—4” pot:
- A199 **Angel’s Perfume** 🌿—Petite, pansy-like flowers with two burgundy and magenta upper petals and three pink lower petals marked with magenta. Ruffled, lemon-scented leaves. A cross between regal and scented geraniums. Long-blooming. 12”h
- A200 **Brocade Cherry Night** 🌿—Semi-double deep rosy pink flowers in 5” clusters stand out against dark bronze leaves with bright green margins. 12–14”h

GERANIUM CONTINUED ON PAGE 25

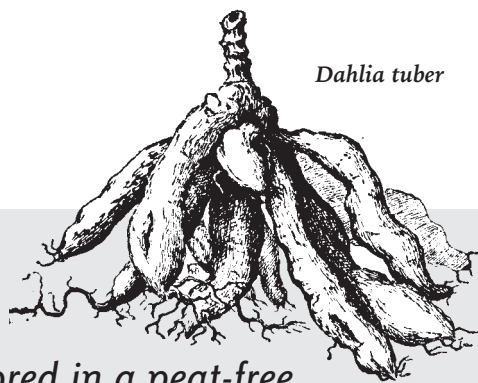


Bring your own wagon...you'll be glad you did!

Dahlia ○🌱

Spring-to-fall bloomers. Did you know the more dahlia flowers you cut, the more you get?

Tender perennials whose tubers can be dug and stored in a peat-free medium in a cool but frost-free basement (40–45°).



Dahlia tuber

- \$3.00—4 plants in a pack:
- A151 **Figaro Mix** 🌿—Yellow, orange, red, gold, white, violet doubles on mounded plants. 12–16”h
- \$3.00—3.5” pot:
- A152 **Collarette Dandy Mix** 🌿—Interior ruffled petals are surrounded by larger, contrasting petals in shades of red, yellow, orange, and white. 18”h
- A153 **Figaro Orange** 🌿—Orange doubles on mounded plants. 12–16”h
- \$6.00—4” pot:
- A154 **City Lights Purple** 🌿—Double 2” flowers have burgundy petals with magenta margins and tips. Dark foliage. 18–24”h 🌱🦋
- A155 **City Lights Red** 🌿—True red 2” flowers are slightly fragrant. Dark foliage. 18–24”h 🌱
- A156 **Dalaya Pink Lemon** 🌿—Pink-brushed cream flowers blending to soft yellow around the center. Formerly Dalaya Shari. 16–18”h
- A157 **Dalaya Pink Rose Eye** 🌿—Bright lavender-pink turns to burgundy near the center. Formerly Dalaya Yogi. 18”h
- A158 **Dalaya Yellow Red Eye** 🌿—Double yellow with orange-red toward the center. Formerly Dalaya Shiva. 16–20”h
- A159 **Electro Pink** 🌿—Neon pink 4” spiky cactus type. Dark foliage is near-black. Also called Neon Star. 24–36”h
- A160 **Grandalia Yellow** 🌿—Double 3” yellow flowers. 14–16”h by 18–20”w 🌱
- A161 **Happy Days Fuchsia Halo** 🌱 **NEW** 🌿—Orange center and yellow halo glow like a ring of fire inside bright fuchsia petals. 3” flowers. Dark foliage. 10–14”h

- \$6.00—4” pot (continued):
- A162 **Happy Days Neon** 🌱 **NEW** 🌿—Shades of salmon blend to yellow near the dark center eye of 3” flowers. Dark foliage. 10–14”h
- A163 **Happy Days Purple** 🌱 **NEW** 🌿—Purple-pink petals on 2–3” flowers. Magenta eye and dark green to bronze foliage. 10–14”h
- A164 **Hypnotica Pink Bicolor** 🌿—Doubles in shades of bright pink. 12–18”h
- A165 **Hypnotica Tequila Sunrise** 🌿—Double 3–4” flowers whose yellow petals have reddish orange tips. Informal decorative type. 18”h by 15”w
- A166 **Hypnotica Tropical Breeze** 🌿—Double flowers have light yellow petals edged and tipped with bright pink. Formal decorative type. 10–12”h by 20”w
- A167 **Painter Berry Impressions** 🌿—Double 4” flowers are splashed purple, crimson, and white. Informal decorative type from France. 18–24”h
- A168 **Painter Sunfire** 🌿—Unruly, pointed yellow petals are streaked, striped, and dotted with red. 18–24”h

- \$15.00—1 gal. pot:
- A169 **Crème de Cassis**—Burgundy buds open to 4–6” blossoms that have light lilac petals with magenta-plum undersides. Named for the burgundy-colored liqueur. Decorative waterlily type. 30–36”h
- A170 **Dazzling Sun** 🌱 **NEW** 🌿—Orange-red center flows into soft yellow petals lightly edged in orange. 8” flowers. Fully double decorative type. 36”h by 18”w

- \$15.00—1 gal. pot (continued):
- A171 **Emory Paul**—Deep pink 12–14” flowers with light pink edges. Packed with pointed petals. 36–40”h by 24”w
- A172 **GoGo Two Tone Purple-White** 🌱 **NEW** 🌿—Purple center flows into white tips on 4–6” flowers. New petals emerge curled, flattening as they grow. 14–24”h
- A173 **Happy Single Wink** 🌱 **NEW** 🌿—Deep red-pink center ring flares out to light pink petals on 4” flowers. Burgundy and yellow center. Dark to black foliage. 24–32”h
- A174 **Kelvin Floodlight**—Yellow flowers, 10” or more across, put the sun right in your garden. Dense layers of petals emerge from the center folded on the long edges, opening as they grow. Multiple award winner. 36–48”h by 18–24”w
- A175 **Mystery Day** 🌱 **NEW** 🌿—White-tipped purple petals on 7–10” flowers. Fully double decorative type. 30–42”h by 18–24”w



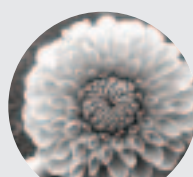
Formal decorative



Waterlily



Cactus



Ball or Pom-pom



Informal decorative

We accept checks, cash, Amex, Visa,
MasterCard, Discover, and Apple Pay

Annuals

Key

- Full sun
- ◐ Part sun/part shade
- Shade
- 🐝 Attractive to bees
- 🦉 Audubon-endorsed
- 🦋 Butterfly-friendly
- 👉 Hummingbird-friendly
- 🌿 Attractive foliage
- 🍷 Culinary
- 🌸 Edible flowers
- 🌿 Ground cover
- 🏠 Houseplant
- 👉 Medicinal
- 🇺🇸 Minnesota native
- 🌳 Rock garden
- ❄️ Cold-sensitive: keep above 40°F
- ☹️ Toxic to humans
- 🔄 Saturday restock

Salvia continued

\$6.00—4" pot (continued):

- A402 **Bodacious Smokey Jazz** *S. guaranitica* 🌿—Black bud cases with magenta-purple flowers. 18–36" h 🐝
- A403 **Hummingbird Falls** *S. guaranitica* 🌿—Black bud cases hold purple flowers. Unusually shaped plant for a salvia, it will trail from hanging baskets. 12–24" h by 18–36" w 🐝
- A404 **Mystic Spires Blue** 🌿—Purplish blue spikes bloom spring to frost. 24" h 🌿🐝
- A405 **Mystic** *S. farinacea* 🌿—Purple-blue flowers on a more compact version of Mystic Spires that won't over-run other plants in mixed containers. 12–18" h by 28" w 🌿🐝
- A406 **Roman Red** *S. splendens* 🌿—Vibrant red flowers emerge from burgundy bud cases. Blooms early summer to frost with light deadheading. 28–34" h 🌿🐝
- A407 **Skyscraper Orange** 🌿—Spikes of fiery orange flowers are a genetic breakthrough in salvia color. Matching orange-tinged bud cases. Blooms from late spring into fall. 14–28" h 🐝
- \$7.00—5.25" pot:
- A408 **Mirage Cherry Red** *S. greggii* 🌿—Intensely red tubular flowers all summer. Red + tubular = hummingbirds. 12–14" h 🐝

See also SAGE, pages 9 and 39

A409 Sea Holly, Kanas 🌿

Eryngium leavenworthii

Greenish silver flower heads change color to resemble 1–3" bristly purple pinecones or pineapples, each surrounded and crowned by jagged purple bracts. Native as near as Wisconsin. Offbeat, fanciful plants seem to be from an alien planet. Stiff, branching stems with prickly leaves. Color on the cones and spiny bracts remains when cut or dried. Best in hot, full sun and actually likes poor, dryish soil. Blooms July–September. Drought-tolerant and deer-resistant. 24–36" h by 12–24" w 🌿🐝☹️

\$3.00—3.5" pot

See more SEA HOLLY, page 39

A410 Senna, Popcorn 🌿

Cassia didymobotrya

Fast-growing, graceful, feathery shrub from Africa with yellow flowers. It smells exactly like buttered popcorn if you rub the leaves or if a breeze blows through it. Rounded shape. Formerly Cassia, Popcorn. 48" h by 36" w ○

\$6.00—4" pot

Snapdragon Antirrhinum

Garden classic for great cut flowers early summer to fall. Deer-resistant. ○

\$3.00—4 plants in a pack:

- A411 **Madam Butterfly Mix** 🌿—Double azalea-type flowers in a wide range of colors. 24–30" h
- A412 **Rocket Mix** 🌿—Tall, great for cut flowers. 36" h
- A413 **Speedy Sonnet Purple** 🌿—Magenta purple. The Speedy Sonnet series blooms extra early and needs a bit less sunlight than the Sonnet series. 18–24" h by 6" w
- A414 **Speedy Sonnet Yellow** 🌿—Butter yellow flower with cream margins. The Speedy Sonnet series blooms extra early and needs a bit less sunlight than the Sonnet series. 18–24" h by 6" w

\$5.00—6 plants in a pack:

- A415 **Potomac Appleblossom** 🌿—White dusted with dark pink on the lower petal. 40–60" h
- A416 **Potomac Dark Orange** 🌿—Orange with hints of yellow and pink. 40–60" h
- A417 **Rocket Bronze** 🌿—Shades of pink, yellow, and peach. 30–36" h by 16–18" w

Snapdragon, Chantilly *Antirrhinum*

Open-faced, jumbo flowers cluster on strong stems in spring and fall. Longer-lasting in the garden and in the vase than traditional snapdragons. ○

\$3.00—4 plants in a pack:

- A418 **Deep Orange** 🌿—Dark salmon flowers. 30–40" h
- A419 **Light Salmon** 🌿—Light gold to peach flowers. 30–40" h
- A420 **Purple** 🌿—Orchid. 36–40" h

A421 Snapdragon, Dwarf 🌿

Antirrhinum Chimes Mix

Mix of reds, pinks, purples, yellow, and white. Early. A snapdragon for edging. Heat- and frost-tolerant. 6–8" h ○

\$3.00—4 plants in a pack

Spiderflower *Cleome hassleriana*

Whiskery, fragrant flower clusters on robust yet airy plants. Performs well through heat and drought. Self-seeds for next year. Useful for backgrounds and large beds; a cottage garden classic. Seeds are eaten by finches and juncos. ○🐝🌿

\$3.00—3.5" pot:

- A422 **Sparkler Rose** 🌿—Profusely blooming 4–6" flowers on vigorous, bushy, prickle-free plants. Pink. 24–36" h
- A423 **Sparkler Violet** 🌿—Purple. 24–36" h
- A424 **Sparkler White** 🌿—White. 24–36" h

\$5.00—6 plants in a pack:

- A425 **Queen Cherry** 🌿—Bright pink 3–8" flower heads look quite tropical. 36–48" h 🌿

\$6.00—4" pot:

- A426 **Clementine Blush** 🌿—Shades of pink from pale to lavender pink. Does not self-seed. 15–18" h by 10–12" w

Spurge, Annual *Euphorbia*

Such useful, trouble-free plants. Deer- and rabbit-resistant. Avoid the irritating sap common to all *Euphorbia*. ○🐝☹️

\$6.00—4" pot:

- A427 **Flame Leaf** 🌿—Small, delicate-looking purple-black leaves with fine chartreuse margins on wiry stems. Tough bushy plant from the Amazon can be a houseplant, but is at its best as a filler in outdoor containers. 8–12" h 🐝

- A428 **Miner's Merlot** 🌿—Upright red stems hold whorls of narrow 3–4" leaves that emerge raspberry-burgundy. Leaves turn dark green, but the backs remain deep red until fall when the foliage becomes almost black-burgundy. From late spring until summer, loose sprays of electric greenish yellow bracts create a sharp contrast. 18–24" h

- A429 **Star Dust Super Flash** 🌿—Snowflakes of tiny white flowers look delicate but the plant is weather-resistant and low-maintenance. Will mound on its own or can mingle with vigorous annuals like petunias. Blooms until frost without deadheading. A great filler plant. Heat and drought tolerant, and deer-resistant. 8–18" h by 18–24" w

See more SPURGE, pages 40 and 56

A430 Star Flower 🌿

Isotoma axillaris Fizz 'n' Pop Glowing Violet

Nectar-rich purple flowers have a small white and chartreuse center. Mounds of fragrant 1" star-shaped flowers that bloom until frost. Leaves have irregular, spiky edges. Good along paths. Formerly *Laurentia*. 8–12" h by 8–12" w ○🐝

\$6.00—4" pot

Sun Daisy *Osteospermum*

Cheerful 3" daisies. Excellent for cutting. Colors are most vibrant in sun. ○

\$6.00—4" pot:

- A431 **4D Berry White** 🌿—Large, central burgundy-violet pompom composed of petals keeps the purple-tipped white outer petals open even on cloudy days. 8–12" h
- A432 **FlowerPower Spider Purple** 🌿—The middle third of each pinkish violet petal is tightly rolled, creating a spoon at the tip. The unusual flower looks like a strange sea creature. 10–14" h
- A433 **FlowerPower Spider White** 🌿—White petals start out daisy-like at center, narrow and curl in on themselves midway, and finish with little "spoons" at the tips. Trim after spring bloom to encourage fall blossoms. 10–14" h 🐝
- A434 **Zion Copper Amethyst** 🌿—Petals have orange tips blending to pinkish purple around dark blue centers. Named for the colors found in Zion National Park in Utah. 10–16" h by 12–20" w
- A435 **Zion Purple Sun** 🌿—Gold-orange petals blend to deep pink to purple around a yellow-dotted center. 16–20" h

Sunflower *Helianthus annuus*

Late summer and fall bloomers, sunflowers are the sentinels of the garden, loved by children and birds alike. Cultivated by southwestern Native peoples as early as 3000 B.C., then taken to Europe by the Spanish around 1500 A.D. It's likely that they will self-seed next year if left in the garden over winter. ○

\$3.00—seed packet:

- A436 **Evening Colors Blend**—Flowers on each plant vary from gold to pale yellow with dusty rose to pink rings. Large brown centers. Long stems make for great bouquets. 96" h 🌿🐝🌿
- A437 **Mammoth Russian**—Giant stems hold up 12" yellow flowers. Abundant gray-striped seeds. A real kid-pleaser and popular in gardens since the 1800s. (90 days for seeds.) 144–168" h 🌿🌿🌿
- A438 **Red Blend**—A range of red shades and bicolors. 4–8" flowers are good for cutting. 60–72" h 🌿🌿

\$3.50—seed packet:

- A439 **Autumn Beauty**—A fall palette of 6–8" red, gold, rust, and burgundy flowers on multiple branches. Many bicolored, with deep chocolate centers. May produce two dozen flowers per plant. Good cut flower. You will attract chickadees and goldfinches to your garden as the seed heads mature. (60 days.) 60–84" h 🌿🐝🌿
- A440 **Tarahumara**—Single 8–10" yellow flowers produce delicious plump white seeds. Heads droop down when mature. Cover heads with netting if you want the seed for yourself. (80 days for seeds.) 72–108" h 🌿🌿🌿
- A441 **Teddy Bear** 🌿—Fluffy sunny yellow pompoms on dwarf plants look squeezably soft. Fully double 3–5" flowers are nice for cutting and shed little pollen. Shorter in a container. (65–75 days.) 8–24" h

Sweet Potato Vine *Ipomoea batatas*

Vigorous trailing vine can romp among your flowers or cascade from baskets or containers. ○🐝🌿☹️

\$4.00—3.5" pot:

- A442 **Blackie** 🌿—Dark purple. 6–10" h by 24–36" w
- A443 **Bright Ideas Rusty Red** 🌿—Greenish yellow leaves flushed with pinkish red and with red veins. From a short distance the foliage appears light cinnamon. More bushy than trailing. 8–12" h by 18–24" w
- A444 **Marguerite** 🌿—Heart-shaped chartreuse leaves. 6–10" h by 24–36" w
- \$6.00—4" pot:
- A445 **Illusion Emerald Lace** 🌿—Almost spidery chartreuse leaves. 6–10" h by 24–36" w
- A446 **SolarPower Black Heart** 🌿—Elongated, heart-shaped blackish purple leaves. 10–12" h by 24–36" w
- A447 **Spotlight Black** 🌿—Lacy purplish black leaves. Mounds rather than trails. 8–10" h by 16–20" w

Sweet William *Dianthus barbatus*

Old-fashioned beauty and fragrance. Clove-scented. ○🐝☹️

\$3.00—4 plants in a pack:

- A448 **Wee Willie** 🌿—Mix of scented red, pink, and white bicolors. Self-seeds. 6" h

\$6.00—4" pot:

- A449 **Green Ball** 🌿—Soft, mossy-looking, spherical flowers are light but bright green. Floral arrangers love them for their weirdness and how long they last after being cut. Blooms spring into fall. 10–14" h



Spiderflower



Sweet William

wagon wagon

who's got a wagon?

Do you wish you could bring your own wagon or cart to the plant sale, but don't have enough room in your car?

Try searching "collapsible wagon" or "folding utility cart" to see all the local stores (Ace Hardware, Dick's, Sam's Club, Target) that sell these wagons. Also available online.



Annuals

Plant widths are similar to their heights unless noted otherwise.

Tobacco, Flowering *Nicotiana*

Fragrant, long-blooming trumpets. Most are out-facing. Excellent nectar source for hummingbirds and moths (including the hummingbird-like sphinx moth). Seeds for finches and juncos. May self-seed.

○●☞☝

\$3.00—4 plants in a pack:

- A450 **Saratoga Mix** **NEW** ☞—A colorful array of apple blossom, deep rose, lime, purple, red, or white flowers will light up your garden. 10–12”h
A451 **Saratoga Red** ☞—Dark red flowers. 12–18”h

\$5.00—6 plants in a pack:

- A452 **Cranberry Isle** ☞—White, pink, mauve, lilac, violet, and dark purple flowers, some with darker veining. A reintroduced heirloom hybrid. 36–48”h by 30”w
A453 **Lime N. alata** ☞—Light chartreuse 1” trumpets bloom profusely for three months. Looks especially great with blue flowers. 24–36”h
A454 **Perfume Bright Rose** **NEW** ☞—Deep rose-pink flowers bloom all summer. 16–20”h by 12–15”w
A455 **White to Rose N. mutabilis**—Each flower starts out white and changes to pink then rose, all colors at once. Hummingbird favorite. 36–60”h
A456 **Woodland N. sylvestris** ☞—Very elongated, drooping white flowers form fountains on tall stems. Huge leaves and strong sweet scent. More shade-tolerant than other tobaccos. Self-seeds. 48–60”h

Tuberose *Polianthes tuberosa*

Fragrant, star-faced trumpets used in the best Hawaiian leis. A single flower from a spike of successive blossoms is enough to perfume a whole room. This tender perennial is usually grown here as an annual, but you can dig up and store the bulb dry for the winter. ○●☞☝

\$9.00—5.25” pot:

- A457 **Single** ☞—White. 36”h
A458 **The Pearl** ☞—White 2” double flowers bloom in summer from pinkish buds. 15–36”h

Verbena *Verbena*

Trailing brilliant colors. Heat- and drought-tolerant. ○☞☝

\$3.00—4 plants in a pack:

- A459 **Imagination V. tenuisecta** ☞—Large clusters of deep blue-violet flowers. Feathery foliage. One of the late garden writer Marge Hols’s all-time favorites. Self-seeds. 12”h by 20”w
A460 **Obsession Coral with Eye** ☞—Orangy pink with a white eye. 6–8”h by 10–12”w

\$6.00—4” pot:

- A461 **Lanai Bright Eye** ☞—Light pink with a deep pink center. 6–10”h by 20–24”w
A462 **Mango Orange** ☞—Coral-orange with an orange eye. 12–14”h
A463 **Vampire** ☞—Blood red with a dark eye that turns blue in low light—spooky! Did you know that verbena was thought to be poisonous to vampires? 12–14”h

A464 Verbena, Brazilian

Verbena bonariensis

Tiny, tubular lilac flowers in fragrant 2” pompoms held on stiff, almost leafless silvery stems. Blooms summer to early fall and makes a good cut flower. Looks particularly nice with grasses and butterfly flower (*Asclepias curassavica*). Self-seeds. Deer-resistant, drought-tolerant, and easy. It’s no wonder many gardeners consider it indispensable. 48”h by 24”w ○●☞☝

\$5.00—6 plants in a pack

A465 Verbena, Slender

Verbena rigida Dazzling Nights

Rounded clusters of magenta-purple flowers. Similar to Brazilian verbena, but shorter and with bigger, brighter flowers. Long bloom period and nectar-rich. Heat, drought, deer, and rabbits do not bother it. Also known as sandpaper verbena because of its rough-textured leaves. 14–18”h ○☞☝

\$5.00—6 plants in a pack

Zinnia



Vinca

Vinca

Catharanthus

Ever-blooming, open-faced flowers in abundance. Thrives in summer heat. Low-maintenance and stays neat until frost. Glossy, mounding foliage. ○●☞☝

\$3.00—4 plants in a pack:

- A466 **Pacifica Mix** **NEW** ☞—Bushy plants with large vivid flowers ranging through red, orange, and orchid. 10–14”h ☺
A467 **Pacifica Polka Dot** **NEW** ☞—Large flowers of pure white with bright red eyes. 10–14”h ☺
A468 **Pacifica Red C. roseus** ☞—True red. 16”h ☺
A469 **Tattoo Blackberry** ☞—Very dark purple with a white eye. 14–16”h by 6–8”w
A470 **Tattoo Raspberry** ☞—Pink petals brushed with purple around a purple eye. 12”h by 8”w

\$6.00—4” pot:

- A471 **Quasar Red Target** ☞—Deep pink. 12”h by 18”w
A472 **Quasar Salmon Target** ☞—Pinkish orange with a dark eye. 12”h by 18”w

A473 Vinca Vine *Vinca major* Expoflora

Long trailing vine holds green foliage with wide, irregular white edges. Blue blossoms may occur in full sun. Great for containers. 6–12”h ○●☞☝

\$6.00—4” pot

Wishbone Flower *Torenia*

A treasure for shaded beds and pots. Colorful 1” flowers. Look for the little “wishbones” hidden inside the flower. Deer-resistant. ○●

\$3.00—4 plants in a pack:

- A474 **Clown Blue T. fournieri** ☞—Light and dark blue. 8–10”h
A475 **Clown Lemon** ☞
A476 **Clown Mix** ☞

\$6.00—4” pot:

- A477 **Magenta Moon** ☞—Apricot and magenta with a dark magenta eye. Trailing. 4–6”h by 12”w ☞☝
A478 **Summer Wave Large Blue** ☞—From our grower: “One of our favorite local designers has to have this elegant, easy-to-grow shade beauty in her clients’ gardens and containers.” Almost 2” flowers are two shades of blue, with little or no white. One of the 2010 U of M Best Performers. 8–10”h by 10–20”w
A479 **Summer Wave Silver** ☞—Very pale lilac with a purple throat. 8–10”h by 20–36”w ☝

Zinnia *Zinnia elegans*

Bright colors and continuous bloom, especially with frequent cutting. Long-lasting cut flowers. Make sure they have adequate air circulation to reduce mildew. Easy from seed. Deer-resistant. ○

\$3.00—seed packet:

- A480 **County Fair Blend** **NEW** ☞—Yellow, purple, red, and pink mix of 2–5” flowers. 24–36”h ☝

\$3.50—seed packet:

- A481 **Persian Carpet Mix Z. haageana**—A sparkly mix of 2” double to semi-double flowers in yellow, orange, mahogany, gold, and burgundy with a few cream and red flowers thrown in. Most flowers are bicolor with contrasting centers or petal tips. A tough plant that thrives despite heat, drought, and wind. Best to direct sow since it does not enjoy being transplanted. Blooms steadily mid-summer to frost. A different species than garden zinnias, it has narrower leaves and is bushier. 1952 All-American Selections winner. 16”h ☞☝
A482 **Whirlygig Mix**—Bright 3–4.5” flowers, most with contrasting color on serrated petal tips. Colors include cream, pink, deep rose, scarlet, yellow, and orange. Single to semi-double daisies on bushy plants. 20”h ☞☝☝

\$3.00—4 plants in a pack:

- A483 **Lilliput Mix** ☞—This zinnia series is a particular magnet for butterflies. 18–24”h ☝
A484 **Pop Art Red & White** ☞—Double 2–3” flowers have white petals that are striped, splashed, and speckled with red. 24”h by 12”w ☞☝
A485 **State Fair Mix** ☞—Huge flowers up to 6” across. Good for cutting. 36–48”h ☝
A486 **Swizzle Cherry Ivory** ☞—3.5” bicolor. 6–12”h

\$6.00—6 plants in a pack:

- A487 **Benary’s Giant Lime** ☞—Fully double chartreuse 4–5” flowers. 40–50”h
A488 **Benary’s Giant Mix** ☞—Fully double 4–5” flowers in a rainbow of colors. 40–50”h
A489 **Benary’s Giant Wine** ☞—Fully double burgundy 4–5” flowers resembling double dahlias. 36”h

Zinnia continued

\$6.00—6 plants in a pack (continued):

- A490 **Cupcakes Deep Orange** ☞—Intense reddish orange 2” double flowers with a sprinkling of gold around the center. The many layers of petals do look the way an overly enthusiastic cupcake decorator might make a frosting flower. There will be a few semi-double and single flowers, too. Great cut flower and dries well. 24–30”h
A491 **Cupcakes Rose**—Hot pink with a light sprinkling of orange. 24–30”h
A492 **Hidden Dragon** **NEW** ☞—Soft red petals tipped in white on 3” flowers that become more layered over time. 24”h by 12”w ☝
A493 **Inca** ☞—Sun-worshipping fiery orange 5” double flowers. Looks great with blue salvia. 36–40”h
A494 **Pinca** ☞—Fully double peachy pink 6” flowers. Great as a cut flower or just massed in your garden bed. 36”h
A495 **Queeny Lemon Peach** **NEW** ☞—Yellow 2–3” flowers with a ruby-coral center turn pale pinky orange. Fully double and semi-double flowers with a few singles. 30–40”h ☞☝☝
A496 **Queeny Lime Orange** ☞—A 3” globe of deeply fluted petals that shade from salmon or coral through peach to slightly greenish yellow, then lighten as the blossom develops. Rosy red center. Mostly double and semi-double. Lasts about three weeks as a cut flower. 24–40”h ☝
A497 **Queeny Lime Red** ☞—Muted burgundy outer petals grade to lime around the center with shades of rose, mauve, and soft chartreuse. Each flower a little different. Double or semi-double. 40–50”h ☝
A498 **Zowie! Yellow Flame** ☞—Each flower opens as a single 3–5” yellow daisy with magenta near the center, then day by day adds more layers of petals while changing to orange-red with gold tips. The dark red central cone is interesting, too: quite prominent at first and then it retreats under the additional petals, but always with a ring of starry yellow mini-flowers (florets) like a crown. Lasts up to two weeks as a cut flower. Monarchs love this variety and goldfinches enjoy the seeds. AAS Winner 2006 and many gardeners’ favorite zinnia. 24–36”h ☞☝

Zinnia, Dwarf Zinnia

Compact with bright, clear colors. Easy to grow and blooms until frost. ○

\$3.00—4 plants in a pack:

- A499 **Profusion Cherry Z. elegans** ☞—Compact, mound-forming, mildew resistant. 12”h ☝
A500 **Profusion Mix Z. elegans** ☞—12”h ☝
A501 **Profusion Orange Z. elegans** ☞—12”h ☝
A502 **Profusion White Z. elegans** ☞—12”h ☝
A503 **Zahara Double Raspberry Ripple Z. marylandica** ☞—Semi-double 2.5” flowers are pink and white striped. The white petal margins are tinged with pink in cooler weather, becoming whiter in hot weather. 16–20”h
A504 **Zahara Starlight Rose Z. marylandica** ☞—2.5” bicolor, white with a rose starburst in the center. 8–12”h ☝
A505 **Zahara Sunburst Z. marylandica** ☞—Large, vibrant yellow blossoms reveal dark central stripes that widen later in summer and fall. 12–18”h

\$6.00—6 plants in a pack:

- A506 **Profusion Red Yellow Bicolor Z. elegans** ☞—Yellow 2.5” flowers with a red ring around the center magically change to shades of apricot, salmon, and dusty pink later in the season. 8–14”h by 20–24”w
A507 **Zahara Double Salmon Rose Z. marylandica** ☞—Bright, slightly orangy pink. 16–20”h



Flowering tobacco

Plants marked with  are especially good for bees

Learn More About
Friends School of Minnesota



Friends School
OF MINNESOTA 