

34th Annual Friends School Plant Sale

May 12, 13, and 14, 2023

Friday 9:00 A.M.—8:00 P.M. • Saturday 10:00 A.M.—6:00 P.M.

Sunday remaining plants one-third off 10:00 A.M.—2:00 P.M.

At the Minnesota State Fair Grandstand • Free admission • Free parking

www.FriendsSchoolPlantSale.com

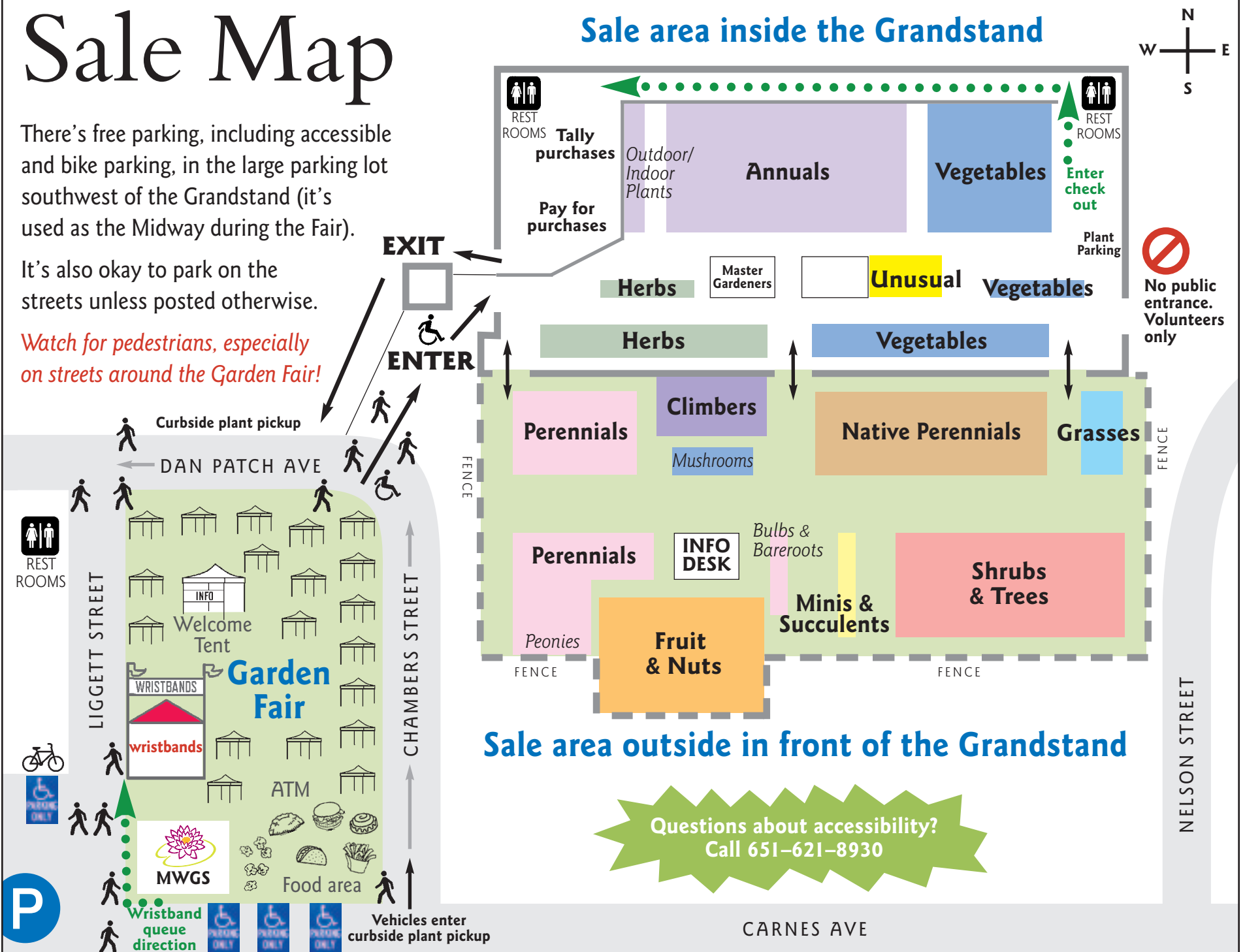
info@FriendsSchoolPlantSale.com • 651-621-8930

Sale Map

There's free parking, including accessible and bike parking, in the large parking lot southwest of the Grandstand (it's used as the Midway during the Fair).

It's also okay to park on the streets unless posted otherwise.

Watch for pedestrians, especially on streets around the Garden Fair!



CONTENTS

FEATURES

What's New This Year	2
About Friends School	2
How to Do the Sale	3
Garden Fair	4
Water Plants	5-6
Our Policy on Neonic Pesticides	16
Grow Your Own Mushrooms	17
Students at the Plant Sale	23
Profile: Green Earth Growers	30
BYO Boxes, Please	47

INDEX

By Common Name	58
By Latin Name	59

PLANT LISTINGS

Herbs	7-9
Basil	7
Lavender	8
Vegetables	10-17
Peppers	13
Tomatoes	15-16
Unusual & Rare Plants	18-19
Annuals	20-29
Outdoor/Indoor Plants	20-21
Coleus	22
Dahlias	24
Impatiens	25
Marigolds	26
Petunias	27

PLANT LISTINGS

Perennials	31-40
Daylilies	33
Hostas	35
Iris	36
Lilies	37
Peonies	39
Stonecrop	40
Miniatures & Succulents	41-42
Climbing Plants	43-44
Fruit & Nuts	45-47
Shrubs & Trees	48-51
Roses	51
Native Perennials	52-56
Grasses & Sedges	57

What's New in 2023

New website

We have a new website! Working with Twin Cities-based digital agency Us Creative Works and an intrepid group of plant sale volunteers, we have redesigned and rebuilt our site, www.FriendsSchoolPlantSale.com. It has a refreshed home page and a generally updated interface. Plus, you can now change the quantity of a plant when you first add it to your shopping list and remove multiple items from your list at once. Check it out!

We're happy to be at the Grandstand

We're once again "home" at the Grandstand and this year, strongly encouraging N95 masks for shoppers and volunteers (especially inside the building), but no longer requiring them.

At this point, we don't anticipate changes to that, but if there is a substantial increase in Covid-19 cases locally in April we may require masks. Please check our website or social media in the week before the sale to see if anything has changed.

Floor plan changes

We've adjusted a few things since last year, so be sure to study the map (page 1). Highlights: The

tallyers and cashiers will be back inside the Grandstand where they were in 2019 and earlier. The Info Desk and Volunteer Desk will remain outside the building in tents where they were in 2022. Everybody liked the wider aisles last year, so we are keeping those. Perennials, now including Bulbs & Bareroots, will be in the fenced-in outdoor area of the sale. There will continue to be temporary plant parking inside near the entrance to the checkout line: If you need to leave your plants and get more, you can park them (with your name) in this volunteer-supervised area.

New articles

This year you can learn about Green Earth Growers, one of our long-time local grower partners (page 30). Find out about growing your own mushrooms (page 17). Meet some of the middle school students who make the plant sale happen (page 23). And we're encouraging everyone, more than ever, to **BYO boxes** (see page 47).

New plants

This year, we have 250+ new plant varieties:

- 65 annuals, including seven dahlias, eight petunias, seven coleus, and eight impatiens.

- 82 perennials, with seven daylilies, 20 hostas, 12 lilies, 10 peonies, and five bugleweeds, including the new Fancy Feathers series.
- 24 shrubs or trees, including four hydrangeas and five roses.
- 28 unusual and rare plants, with five new hardy hybrid lady's slippers and seven hellebores. We were not able to get any woody peonies this year, so we have increased the number and selection of Itoh peonies.
- 19 fruit and nuts, with four new strawberries, three currants, and the return of lingonberries.
- 17 vegetables, with six new tomatoes. You'll see most of our 2022 mushrooms, plus three new ones (see V104–V110).

—Friends School Plant Sale committee

Accessibility at the sale

There is marked street parking on Carnes Ave. (the south edge of the Garden Fair), and people with disability hangtags can also park in the part of the Midway lot closest to the wristband booth, just off of Liggett Street.

Please call us at 651-621-8930 with any type of accessibility question, or email info@FriendsSchoolPlantSale.com.

About Friends School of Minnesota

Dear friends,

Thank you!! We appreciate your dedication to our plant sale and your support for our school.

When Friends School of Minnesota first opened our doors, we asked ourselves, "What kind of fundraiser makes sense for us?"

The values of peace and equity—how to end injustice so that we may all experience true peace—were and are foundational principles of Friends School of Minnesota.

After a bit of contemplation the answer came to us...

If you want peace, plant a garden... and the Friends School Plant Sale was born. That philosophy still lives at the

heart of the plant sale community and our sale.

We created a fundraiser that truly matches our values and advances our mission **"to prepare children to embrace life, learning and community with hope, skill, understanding and creativity."** For a community that believes in peace, justice, simplicity, integrity, serving the environment, and community, what fundraiser could be better than a plant sale?

Although the plant sale outgrew our school parking lot years ago, your purchases, volunteer hours, and round-up donations still support a



vibrant K–8 school that is based on those core values. Your support allows for:

- Average class size: 16
- Generous financial aid for over 40% of families
- Integrated K–8 arts program: music, Spanish, visual arts
- Conflict resolution program to help students navigate relationships, understand differing perspectives, and express empathy—vital skills needed to build a more just world.

- Hands-on, outdoor environmental education

We're located just two miles from the Fairgrounds in the Hamline Midway Neighborhood of St. Paul. Visit our website (fsmn.org) and schedule a tour to learn more.

Thank you again for supporting our school. Your support is vital to our mission, our students, and our larger community.

In gratitude,
Joe Mueller, Head of School
Friends School of Minnesota

"Friends School taught me about activism, history, and important current events that impact the world today. I'm thankful for everything I've learned here and how much it helped me grow as a person."

—Sonja, class of 2021

Every year, more than 20,000 people visit our plant sale. We try to make the shopping experience as smooth as possible. This is an overview of the sale. You can find more tips and updates on our website.

How do I get into the sale?

Buses stop next to the Fairgrounds on Como Ave. and Snelling Ave. at Como (Gate 9 is the best entry point on foot). There's a great bike path on Como, too. If you drive, there are free parking spaces, especially in the Midway parking lot. Check the map, page 1.

Whether you arrive before the sale opens or during sale hours, you may need to get a wristband from the Wristband Booth, located on the west edge of the Garden Fair (details at the bottom of this page).

While you wait for your turn to enter, visit the Garden Fair, including the Minnesota Water Garden Society. You will be outside for this part, so dress for the weather!

How do I shop?

At the Welcome Tent in the Garden Fair or as you enter the sale, you'll get a clipboard and tally sheet to record your plants and their prices. **Write down the plant names, prices, and quantities as you select them.** You can also write a list ahead of time (blank sheets are at www.tinyurl.com/plantlist2023) or create an online shopping list with quantities and prices at www.FriendsSchoolPlantSale.com like the one shown here:



Your online list shows each plant's catalog number and price. You can update the quantity for each plant to get an idea of how much your total will be. It's easy to remove plants if you change your mind. Print it out and bring it to the sale OR use your list on your phone.

If you've preprinted a shopping list from the website, remember to make notes on your list if you add or remove plants or change quantities.

We have a limited number of grocery store carts available, so it's a great idea to bring your own wheeled wagon or cart (no sleds or linked carts, please). Folding canvas wagons are also popular!

Once you're inside, there are maps and signs and volunteers to help you find the plants you're looking for.

When's the best time to come?

Each time has its own flavor. Friday and Saturday morning attract the most people, so if

How to Do the Sale

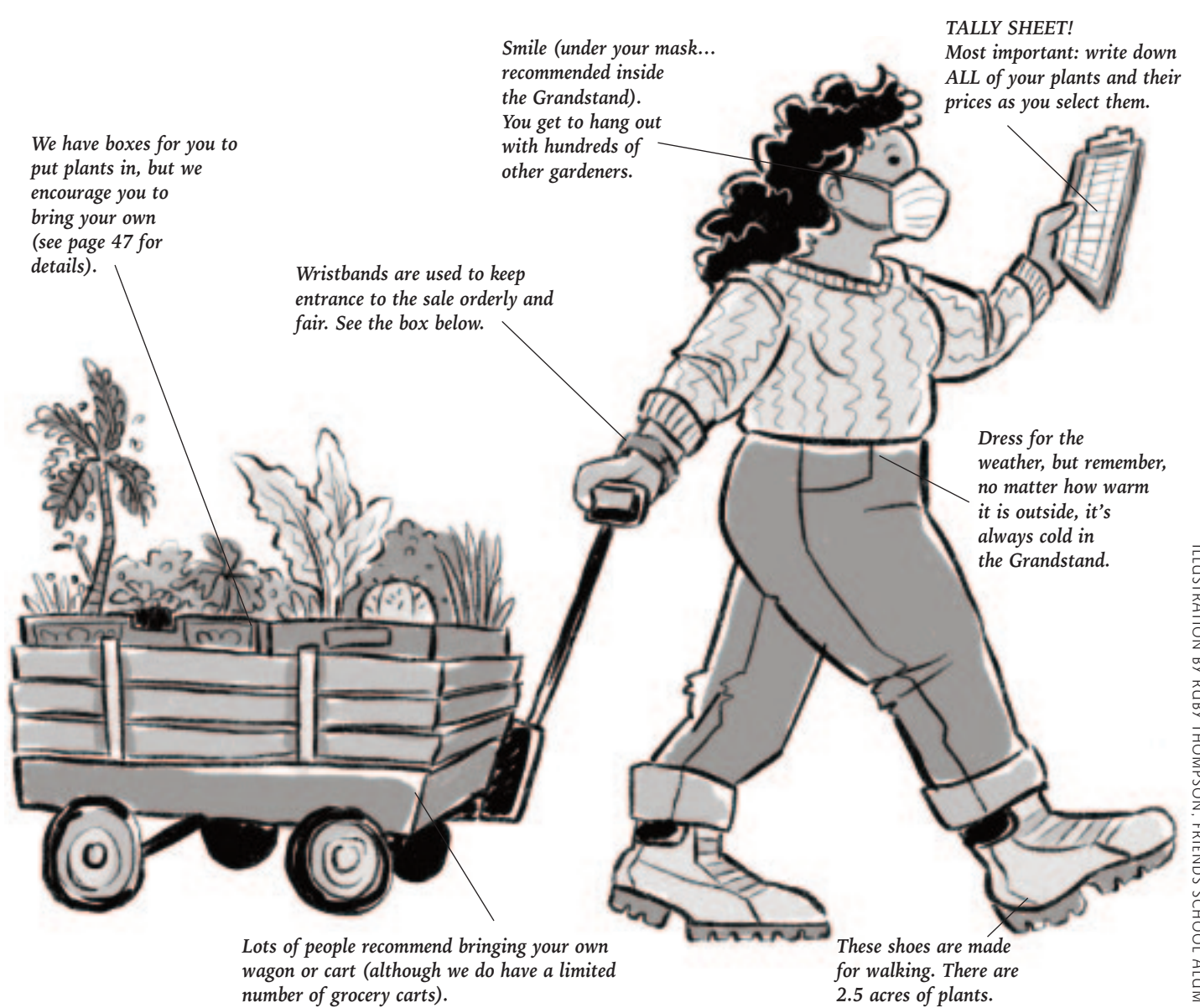


ILLUSTRATION BY RUBY THOMPSON, FRIENDS SCHOOL ALUM

you come at those times you will see the plant sale at its most festive and busy, with the best plant selection.

Later in the afternoon on Friday and Saturday is great for relaxed shopping with little waiting. Sunday is always an adventure. See what you can get for one-third off!

Are there lines?

There are three lines that you might experience:

- 1. Wristband line:** in the mornings.
- 2. Entry line:** this is where you go, briefly, when your wristband number is called.
- 3. Checkout line:** If this occurs, it may seem long but it moves, in the words of one shopper, "freaky fast." Look for the "Enter Line Here" sign along the east wall.

Later in the day, there are usually no entry lines, and often no line at the checkout.

How are the plants organized?

Within each section (Herbs, Grasses, etc.) plants are alphabetical by their common names and are numbered, as in the catalog. You can also look plants up in the index, pages 58 and 59.

Who can answer my questions?

Look for students and volunteers in bright yellow "Ask Me" vests, or sale organizers with pink hats. You can also get help at the Info Desk tent (outside under the big ramp in front of the Grandstand), from Master Gardeners inside at the center of the Grandstand, and from the Welcome Tent in the Garden Fair.

What about checking out?

Checkout is a two-step process: Your plants are added up in one area, based on your tally sheet, then you go to the cashier tables to pay. You can use check, cash, Apple Pay, or credit/debit card.

Always write the full price of plants on your tally sheet. On discount Sunday, the one-third discount is taken at the register.

After paying, you can **leave your plants at curbside plant pickup** west of the Grandstand and return to get them with your car. Please **drive slowly and watch for pedestrians.** If you used one of our shopping carts, you cannot take the cart to your car. Volunteers in orange vests will help at the curb.

Thanks!

This catalog and the new website are brought to you by:

A.J. Zozulin
Annemary Herther
Anne Levin
Carol Herman
Chari Brudnak
Chris Dart
Gretchen Hovan
Henry Fieldseth
Huong Nguyen
Kath Ouska
Keri Poeppe
Kim Erickson
Laurie Krivitz
Lydia Newman-Heggie
Mary Schwartzbauer
Michelle Mero Riedel
Morgan Hopp
Nancy Scherer
Pat Thompson
Ruby Thompson
Sara Barsel
Shana Crosson
Sophie Seaberg-Wood
Tate Bosler
Tina Hammer
Torja Erhart

Friends School of Minnesota

1365 Englewood Ave.
Saint Paul MN 55104
651-917-0636
info@FriendsSchoolPlantSale.com

www.FriendsSchoolPlantSale.com

Twitter: [@plantsale](https://twitter.com/plantsale)

On the cover

An assortment of garden-grown vegetables from last year's sale.

Photo by Michelle Mero Riedel

Why Are There Wristbands?

Our plant sale is popular. More people want to shop than the Grandstand can comfortably hold. Using a wristband entry system is one way to minimize crowding.

Shoppers are given a paper wristband, one per person, until the number of people lessens.

With a numbered wristband, you don't have to stand in line during the busiest times. It's the fairest way to handle the number of people who want to enter the sale at the same time.

Wristbands are distributed at the Wristband Booth starting at:

- **Friday: 6:30 a.m.** (sale opens at 9:00 a.m.)
- **Saturday: 8:00 a.m.** (sale opens at 10:00 a.m.)
- **Sunday: 9:00 a.m.** (sale opens at 10:00 a.m., all remaining plants 1/3 off)

Once the sale opens, you will enter the building in a group, according to the number on your wristband.

Visit our outdoor Garden Fair after picking up your wristband (see page 4 for more on the Garden Fair) or visit a local coffee shop (listed at www.FriendsSchoolPlantSale.com/restaurants).

We make frequent loudspeaker announcements of each wristband number and announce them on Twitter [@plantsale](https://twitter.com/plantsale). As your number draws close, plan to be near the entrance at the west end of the Grandstand to line up with your group.

If you leave the area and return after your group has entered the building, you'll go into the sale with the next group that's admitted. If we run out of shopping carts and you need one, you will have to wait until one is available, even if your number is called.

Please note: If you have friends arriving later than you or parking the car, they will be given a wristband at their arrival time. This system makes the process as fair as possible for everyone.

www.FriendsSchoolPlantSale.com/doing-sale

Garden Fair

Located in the grassy field southwest of the Grandstand where the Wristband Booth is (see map, page 1).

EXHIBITOR HOURS

Friday 7:00 a.m.–6:30 p.m. *Some exhibitors may be open shorter or longer hours.*
 Saturday 8:30 a.m.–6:00 p.m.
 Sunday 9:00 a.m.–2:00 p.m. *Some may not be open on Sunday.*

Barn Quilts

Choose a 2' square painted wooden barn quilt to hang on your fence, house, deck, or garden pole. Go to *Barn Quilts by Mary* on Facebook to see samples.



Cowsmo

Fifth-generation dairy farmers from near Cochrane, Wisconsin, make and sell the finest cow manure compost, organic compost and potting soils throughout the Midwest.

Check their website for local businesses in the Twin Cities and suburbs where the compost is sold. www.CowsmoCompost.com

Down Home Enterprises

Garden art, from rusty garden flowers to a mix of stained glass to bird feeders to kinetic movement. Steel, glass, stone and antique finds. Whimsical snails, insects to enjoy in your garden setting.



www.facebook.com/DownHomeSculptures



Eureka Pots of Minnesota ^{NEW}

Add an artful touch to garden, patio, or home. Create your unique garden stack. Build colorful ceramic pieces stacked on copper pipe. Mix and match from many sophisticated to playful botanical-inspired shapes and sizes. Winter-hardy durable stoneware made by hand in Minnesota. www.eurekapots.com

EZSwap Pots ^{NEW}

A brother duo from Wisconsin make fabric liners as an alternative to coco liners for your hanging planters. We also make unique fabric transplantable pots that truly make transplanting easy. www.ezswappots.com or Facebook @ ezswappots



Froehle Ceramics ^{NEW}

Handmade ceramic planters, vases, and more from Joel Froehle. Each piece is uniquely crafted with care for your indoor or outdoor plants. Makes a great addition to your garden, deck, patio, or table. joelfroehle.com

Holistic Health Farms

Reasonably priced burlap coffee bags for weed barrier and a million other purposes. Off-site pickup can be arranged. tpage4@gmail.com



Honey Do Products Plant Stakes

Mark herb, vegetable, and flower gardens with these 7.75" plant marker stakes. Available in over 300 plant names from Asparagus to Zucchini, Alyssum to Zinnia, and also check out the humorous ones like "Not Dead Yet" or "Cheaper than Therapy." facebook.com/honeydoproducts

KM Leaves

Concrete leaf casts, each one unique—starting from an individual leaf that is cast and then hand-painted using outdoor acrylic paints. They can be used indoors or outdoors, as centerpieces, bird baths, yard decorations, and much more! Most can be hung on a vertical surface using embedded hooks on the back. KMLeaves.com



Minnesota State Horticultural Society (MSHS)

Frustrated by the mountain of inaccurate or irrelevant growing info for northern gardeners? We get it—we live and garden in a short season, too. For 155+ years, MSHS has been supporting northern gardeners of all ages and skill levels with *Northern Gardener* magazine, classes, an online Resource Hub, blog, and bimonthly enews. Find growing tips and inspiration for this area, so you can spend less time digging for info and more time enjoying your garden. Members save \$5 on a purchase of \$50 or more at the Friends School Plant Sale, among many other discounts. Not a member? Join our growing northern gardener community today! www.northerngardener.org/membership/become-a-member



Minnesota Tool Library

A volunteer-driven nonprofit offering Access Over Ownership. Its mission: to empower each other, reduce waste, and improve communities by sharing tools, trade skills, and shop space. There's no need to rent or own costly tools for limited use—borrow instead and let MTL be your garden shed! With everything you may want from broadforks to sod kickers, and power tools like tillers too! MNToolLibrary.org



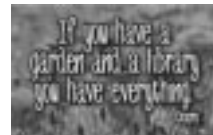
Minnesota Water Garden Society (MWGS)

See their plant listing on pages 5 and 6. MWGS was founded to increase the enjoyment and enthusiasm for water gardening through promotion, education and shared experiences. They will be selling a wide variety of plants that grow in water or like wet feet. Check out all the activities and great water garden resources at www.mwgs.org, follow them on Facebook or visit them during the Garden Fair to find out more.



Northern Sun

Products for progressives since 1979, ranging from social justice, environmental, and humorous messages printed on gardening and environmentally themed T-shirts, magnets, canvas bags, stickers, buttons, and more. Located at 2916 East Lake Street. www.northernsun.com



Of Nature

Of Nature Jewelry and Sculpture



Sculpture and jewelry created from natural objects that are encased in copper and other metals. Finished with sculpture wax to make a lovely addition to your garden.

www.ofnature.com

Picker's Patch Garden Iron

Trellises, benches, planters, arches, and décor. Tin animals, metal art, and baskets. Formerly Garden Iron Imports.



Ramsey County Master Gardeners

Selling Atlas nitrile garden gloves and offering plant and garden information from experts.



River Bend Gardens

Items to beautify your garden: amethyst garden rocks from large (for outdoor gardens) to small (for flower pots and fairy gardens); "imagination" flower pots made from antique and collectible treasures; garden sculptures and miscellaneous garden items.



Roots, Shoots & Leaves ^{NEW}

A mobile houseplant shop offering a variety of live houseplants and accessories to make the hobby of houseplant gardening successful and fun. For the new hobbyist and the experienced plant parent. Come visit to see what's inside! rsleaves.com



St. Anthony Park Garden Tour

Find out about the upcoming tour in the neighborhood just west of the State Fairgrounds. On Saturday, June 24, with tickets available in May. www.StAnthonyParkGardenClub.com



Stonecrete

In its 14th year providing exquisite and decorative garden stones to customers. Hand-cast individually, these garden stones are rated for 4,000 psi and are made to withstand all weather conditions, both in summer and in winter. www.stonecreteonline.com



Two Mikes

Green Fin Plant Care is a 100%-natural fertilizer produced responsibly from invasive carp species that are damaging Minnesota waterways. Made in the Twin Cities area, Green Fin Plant Care is great for home, garden, or field use. It contains the rich nutrients your plants and crops crave. www.twomikes.net



More exhibitors may be added. Please check our website for updates:

www.FriendsSchoolPlantSale.com/gardenfair

GARDEN FAIR FOOD



Cinnie Smith's

Gourmet mini cinnamon rolls, ice cream, sundaes, floats, shakes, hot and iced drinks including coffee.



Edina Coffee Roasters ^{NEW}

Locally roasted brewed coffee and specialty coffee drinks. Plus locally roasted whole beans.



Potter's Pasties ^{NEW}

Crusts with the perfect balance of durability and tender flakiness. Traditional pastie fillings plus breakfast and creative fillings to satisfy a range of palates.



Pow Wow Grounds ^{NEW}

Traditional fry bread with multiple options, including *wojapi* (Dakota fruit pudding) or meat and vegetarian taco fillings. Chicken wild rice and Three Sisters soups (vegan, gluten-free).



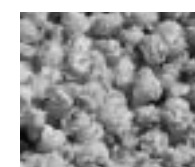
Smokey's Charbroiler

Quarter-pound chopped beefsteak burgers, all-beef hot dogs, pulled pork and chicken, nachos, salmon burgers, and veggie burgers. Plus bratwurst, fancy extra-long french fries, onion rings, chicken strips, corn dogs, hot ham and cheese, and fountain pop.



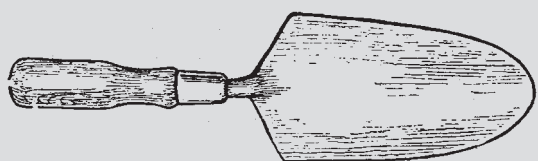
Taqueria el Patron

Tortas and a wide selection of customizable tacos, quesadillas, and fajita burritos, plus fresh guacamole, drinks, and more.



Two Rivers Kettle Korn

Popped fresh with a mix of sweet and salty. It's a State Fair treat in May! Friday 9:00 a.m.–8:00 p.m. Sat. 10:00 a.m.–6:00 p.m. Sunday 10:00 a.m.–2:00 p.m.



There are no workshops in the Garden Fair this year.