



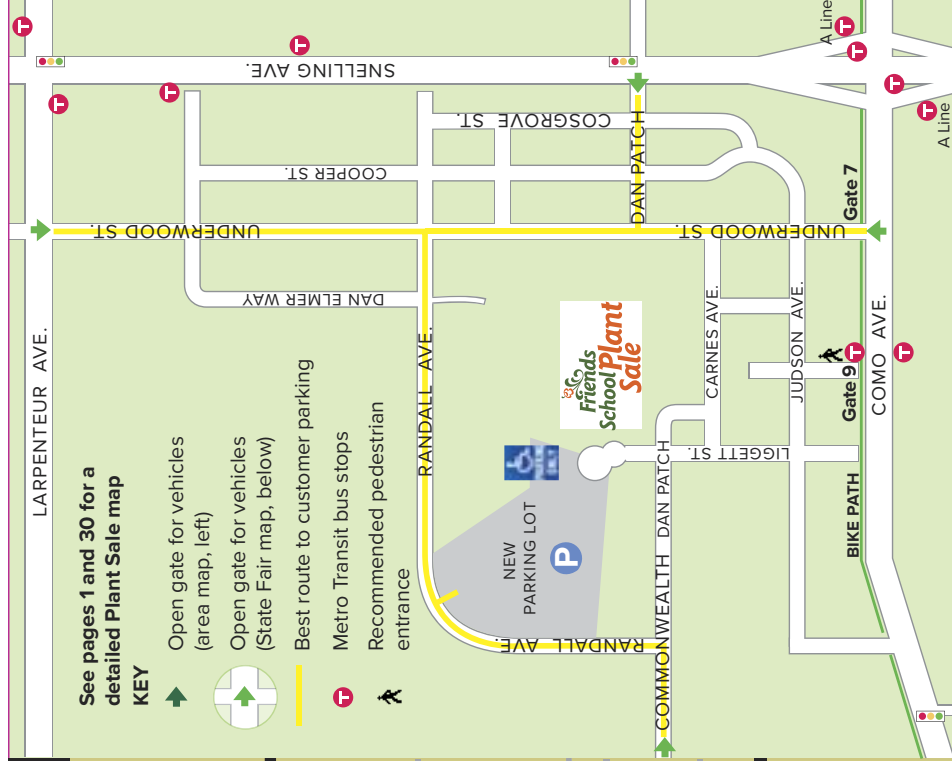
Friends School of Minnesota
1365 Englewood Avenue
Saint Paul, MN 55104

Non-profit Org.
U.S. Postage
PAID
Twin Cities, MN
Permit No. 1767



**OUR PARKING LOT HAS CHANGED
LOCATIONS, SEE INSIDE FOR DETAILS**

FINDING THE SALE



Friends School of Minnesota

Plant Sale

FREE catalog

May 9, 10, 11, 2025

Mothers Day Weekend

Minnesota State Fair Grandstand

Free Admission

Friends School OF MINNESOTA

www.FriendsSchoolPlantSale.com

36th Annual Friends School Plant Sale

May 9, 10, and 11, 2025

Friday 9:00 A.M.–8:00 P.M. • Saturday 10:00 A.M.–6:00 P.M.

Sunday remaining plants one-third off 10:00 A.M.–2:00 P.M.

At the Minnesota State Fair Grandstand • Free admission • Free parking

www.FriendsSchoolPlantSale.com

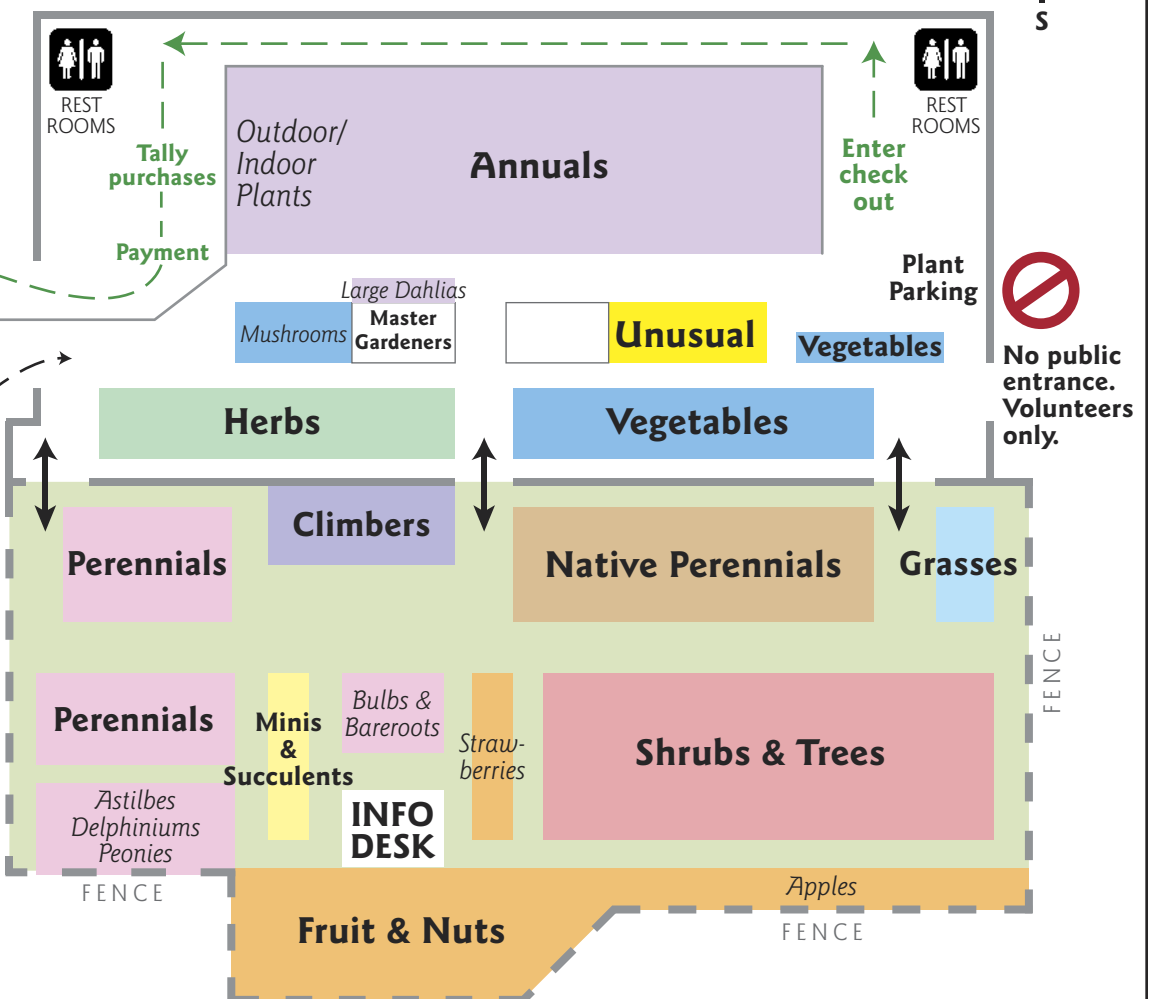
info@FriendsSchoolPlantSale.com • 651-621-8930

Sale Map

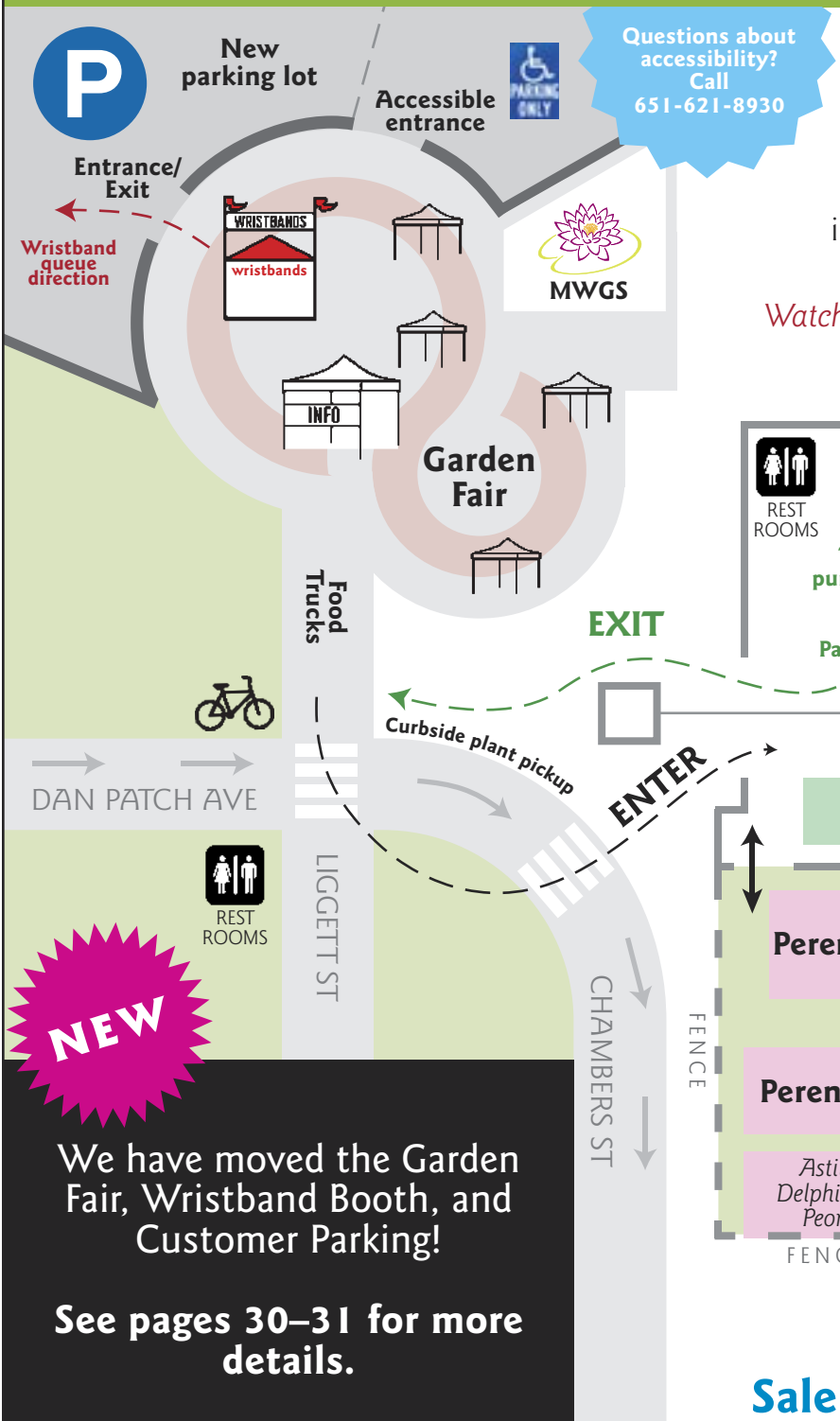
There is free parking, including accessible parking, in the large parking lot northwest of the Grandstand. (It's used as the Transit Hub during the State Fair).

Watch for pedestrians, especially on streets near Curbside Pickup!

Sale area inside the Grandstand



Sale area outside in front of the Grandstand



NEW

We have moved the Garden Fair, Wristband Booth, and Customer Parking!

See pages 30–31 for more details.

CONTENTS

FEATURES

What's New This Year	2
About Friends School	2
How to Do the Sale	3
Garden Fair	4
Make a "Seed Bomb"	5
Water Plants	6–7
So Much Spinach	16
Our Policy on Neonic Pesticides	17
Zero Waste and Box Raffle	27
Parking Location Update	30–31

INDEX

By Common Name	58
By Latin Name	59

PLANT LISTINGS

Herbs	8–10
Basil	8
Lavender	9
Vegetables	11–18
Peppers	15
Tomatoes	17–18
Annuals	19–27
Outdoor/Indoor Plants	19
Coleus	21
Dahlias	22
Impatiens	23
Marigolds	24
Petunias	25
Unusual & Rare Plants	28–29

PLANT LISTINGS

Climbing Plants	32–33
Miniatures & Succulents	34–35
Perennials	36–44
Daylilies	39
Hostas	40
Iris	41
Lilies	42
Peonies	43
Stonecrop	44
Fruit & Nuts	45–47
Shrubs & Trees	48–51
Roses	51
Native Perennials	52–56
Grasses & Sedges	57

What's New in 2025



New parking lot location: No parking in the Midway

The biggest news this year is that we've changed our primary parking lot and moved the Wristband Booth and Garden Fair locations.

Our parking lot is now in the Transit Hub, northwest of the Grandstand. The Wristband Booth and Garden Fair are in the plaza between parking and the Plant Sale. Note: With these changes, there is no parking in the Midway.

You can find a full explanation of these changes—with maps—on pages 30–31.

Texts for wristband announcements

A reminder that we are not posting individual wristband group admission times on Twitter. Instead, please sign up to get a text message when it's your turn to shop, or when wristbands are no longer required each day.

You can sign up for texts after you receive your wristband or on the day you shop at [FriendsSchoolPlantSale.com/wristbands](https://www.FriendsSchoolPlantSale.com/wristbands).

We delete all phone numbers after the sale is over.



More compact

The Herb and Vegetable sections are more compact than last year. The tomatoes will be closer to the rest of the vegetables—no longer at the end of Annuals.

Mushrooms inside

We've moved the mushrooms inside the Grandstand. You'll now find them near the sale entrance, at the bottom of the west stairway.

Finding the Fruit

If you're looking to buy an apple tree this year, they have moved to the far southeast corner of the fenced area, next to Shrubs & Trees. The rest of Fruit continues west along that fence, and goes behind the Info Desk tent.

New plants

There are more than 220 new varieties in this year's sale:

- 38 annuals, including five new large dahlias and four million bells
- 80 perennials, with five hosta, four iris, 15 lilies, 17 peonies, and 22 daylilies
- 18 shrubs and trees
- 20 unusual and rare plants, with eight Itoh or woody peonies and half a dozen hybrid lady's slippers
- 13 fruits or nuts, including three new cherries and two apricots
- 33 vegetables, with five new peppers

—Friends School Plant Sale committee

Accessibility at the sale

There is accessible parking in the new main parking lot closest to the Wristband Booth and Garden Fair (see the map on pages 30–31).

There is also a drop-off area just outside the Garden Fair.

The Metro Mobility drop-off address is **1710 Randall Avenue.**

Please call us at 651-621-8930 with any type of accessibility question, or email info@FriendsSchoolPlantSale.com.



About Friends School of Minnesota

Dear friends,

Thank you!! We appreciate your dedication to our plant sale and your support for our school.

Friends School of Minnesota first opened our doors in 1988. Like many small schools, we knew we would need to raise funds to help our school operate. We asked ourselves, "What kind of fundraiser makes sense for us?"

Our mission is **"to prepare children to embrace life, learning and community with hope, skill, understanding and creativity."** For a community that believes in peace, justice, simplicity,

integrity, and serving the environment, what fundraiser could be better than a plant sale?

Our first plant sale catalog was one double-sided piece of 8.5 x 11 paper, and we sold a total of 2,000 plants. With the commitment of volunteers and shoppers like you, our sale has grown to what you see today.

The values of peace and equity—how to end injustice so that we may all experience true peace—were and are foundational principles of Friends School of Minnesota.

That philosophy still lives at the heart of the plant sale community and our sale.

Your purchases, volunteer hours, and round-up donations play an important part in making Friends School a vibrant place where students can grow as learners and as people who value peace and justice.

On our website, [fsmn.org](https://www.fsmn.org), you will see these words: "We prepare children to be active participants in our democracy. Our graduates leave with a foundation guided



by values and an intellectual discipline that prepares them for a rich and successful academic life. They are prepared to ask complex, thoughtful questions, to find answers, and to advocate for themselves and others."

Your support of the plant sale helps us to bring this mission to life and allows us to create a school with:

- Generous tuition aid for over 48 percent of families
- Average class size: 16
- Integrated K–8 arts program
- Conflict resolution program to help students navigate relationships, understand differing perspectives,

and express empathy—vital skills needed to build a more just world.

- Hands-on, outdoor environmental education

Thank you, again, for all you do to help the plant sale!

In gratitude,

Joe Mueller, Head of School
Friends School of Minnesota

p.s. We're located just two miles from the Fairgrounds in the Hamline Midway Neighborhood of St. Paul. Visit our website ([fsmn.org](https://www.fsmn.org)) to learn more or schedule a tour.

"Friends School taught me about activism, history, and important current events that impact the world today. I'm thankful for everything I've learned here and how much it helped me grow as a person."

—Sonja, class of 2021

Every year, more than 20,000 people visit our plant sale. We try to make the shopping experience as smooth as possible. This is an overview of the sale. You can find more tips and updates on our website.

How do I get into the sale?

Buses stop next to the Fairgrounds on Como Ave. and Snelling Ave. at Como. Gate 9 is the best entry point on foot or bike. There's a great bike path on Como, too. If you drive, there is free parking in the Transit Hub lot. For more information on parking, see the map on page 1 and the center spread on pages 30–31.

Wristbands are needed for entry—from before the sale opens until at least early afternoon. Get one at the Wristband Booth, located on the west edge of the Garden Fair (details at the bottom of this page).

While you wait for your turn to enter, visit the Garden Fair, also the location of the Minnesota Water Garden Society. You will be outside for this part, so dress for the weather!

How do I shop?

At the Welcome Tent in the Garden Fair or as you enter the sale, you'll get a clipboard and tally sheet to record your plants and their prices. **Write down the plant names, prices, and quantities as you select them.** You can also write a list ahead of time (blank sheets are at www.tinyurl.com/plantlist2025) or create an online shopping list with quantities and prices at www.FriendsSchoolPlantSale.com like the one shown here:

Name	Price	Qty	Total
2025: 10000: 10000: 10000: 10000	\$10.00	1	\$10.00
2025: 10000: 10000: 10000: 10000	\$10.00	1	\$10.00
2025: 10000: 10000: 10000: 10000	\$10.00	1	\$10.00
2025: 10000: 10000: 10000: 10000	\$10.00	1	\$10.00

Your online list shows each plant's catalog number and price. You can update the quantity for each plant to get an idea of how much your total will be. It's easy to remove plants if you change your mind. Print it out and bring it to the sale OR use your list on your phone.

If you've preprinted a shopping list from the website, remember to make notes on your list if you add or remove plants or change quantities.

We have a limited number of grocery store carts available, so it's a great idea to bring your own wheeled wagon or cart (no sleds or linked carts, please). Folding canvas wagons are also popular!

Once you're inside, there are maps and signs and volunteers to help you find the plants you're looking for.

How to Do the Sale

We encourage you to bring your own boxes or other containers. See page 27 for info on the raffle for people who bring their own! (We do also have boxes for people who can't bring their own.)

Smile—you get to hang out with hundreds of other gardeners.

Wristbands are used to keep the entrance to the sale orderly and fair. See the box below, and page 2 for info about our texting system for announcing entry numbers.

TALLY SHEET!
Most important: write down ALL of your plants and their prices as you select them.



We strongly recommend bringing your own wagon or cart (although we do have a limited number of grocery carts). See page 27 for info on the raffle for people who bring their own!

Dress for the weather, but remember, no matter how warm it is outside, it's always cold in the Grandstand.

These shoes are made for walking. There are 2.5 acres of plants.

ILLUSTRATION BY RUBY THOMPSON, FRIENDS SCHOOL ALUM

When's the best time to come?

Each time has its own flavor. Friday and Saturday morning attract the most people, so if you come at those times you will see the plant sale at its most festive and busy, with the best plant selection.

Later in the afternoon on Friday and Saturday is great for relaxed shopping with little waiting. Sunday is always an adventure. See what you can get for one-third off!

Are there lines?

There are three lines that you might experience:

- Wristband line:** in the mornings.
- Entry line:** this is where you go, briefly, when your wristband number is called.
- Checkout line:** If this occurs, it may seem long but it moves, in the words of one shopper, "freaky fast." Look for the "Enter Line Here" sign along the east wall.

Later in the day, there are usually no entry lines, and often no line at the checkout.

How are the plants organized?

Within each section (Herbs, Grasses, etc.) plants are alphabetical by their common names and are numbered as in the catalog. You can also look plants up in the index, pages 58 and 59.

Who can answer my questions?

While in the Garden Fair, volunteers at the Welcome Tent can help you. Once inside the sale, look for students and volunteers in bright yellow "Ask Me" vests, or sale organizers with pink hats. You can also get help at the Info Desk tent (outside under the big ramp in front of the Grandstand), and from Master Gardeners inside at the center of the Grandstand.

How do I check out?

Checkout is a two-step process: Your plants are added up in the tallying area, based on your tally sheet, then you go to the cashier tables to pay. You can use check, cash, Apple Pay, or credit/debit card.

Always write the full price of plants on your tally sheet. On discount Sunday, the one-third discount is taken at the register.

After paying, you can **leave your plants at Curbside Plant Pickup** west of the Grandstand and return to get them with your car. Please **drive slowly and watch for pedestrians**. If you used one of our shopping carts, you cannot take the cart to your car. Volunteers in orange vests will help at the curb.

Thanks!

This catalog and our website is brought to you by:

A.J. Zozulin
Andrea Zander
Annamary Herther
Anne Levin
Carol Herman
Chari Brudnak
Chris Dart
Debbie Donnelly
Gretchen Hovan
Henry Fieldseth
Huong Nguyen
Kath Ouska
Kathie Simon-Frank
Keri Poeppé
Kim Erickson
Laurie Krivitz
Lydia Newman-Heggie
Maggie Peltoniemi
Mary Schwartzbauer
Michelle Mero Riedel
Morgan Hopp
Nancy Scherer
Pat Thompson
Ruby Thompson
Sara Barsel
Sophie Seaberg-Wood
Steve Moe
Tate Bosler
Tina Hammer
Torja Erhart
Us Creative

Friends School of Minnesota

1365 Englewood Ave.
Saint Paul MN 55104
651-917-0636
info@FriendsSchoolPlantSale.com
www.FriendsSchoolPlantSale.com

On the cover

Mountain Hydrangea,
Tiny Tuff Stuff S063.

Photo by Michelle Mero Riedel

Why Are There Wristbands?

Our plant sale is popular. More people want to shop than the Grandstand can comfortably hold. Using a wristband entry system is one way to minimize crowding.

Shoppers are given a paper wristband, one per person, until the number of people decreases.

With a numbered wristband, you don't have to stand in line during the busiest times. It's the fairest way to handle the number of people who want to enter the sale at the same time.

Wristbands are distributed at the Wristband Booth starting at:

- Friday: 6:30 a.m.** (sale opens at 9:00 a.m.)
- Saturday: 8:00 a.m.** (sale opens at 10:00 a.m.)
- Sunday: 9:00 a.m.** (sale opens at 10:00 a.m., all remaining plants 1/3 off)

Once the sale opens, you will enter the building in a group, according to the number on your wristband.

Visit our outdoor Garden Fair after picking up your wristband (see page 4 for more on the Garden Fair) or visit a local coffee shop (listed at www.FriendsSchoolPlantSale.com/restaurants).

We make frequent loudspeaker announcements of each wristband number and **you can sign up to get a text message** when your number is called at FriendsSchoolPlantSale.com/wristbands. (Note: messaging and data rates may apply.)

As your number draws close, plan to be near the entrance to the Grandstand.

If you leave the area and return after your group has entered the building, you can enter as soon as you arrive. If we run out of shopping carts and you need one, you will have to wait until one is available, even if your number is called.

Please note: If you have friends arriving later than you or parking the car, they will be given a wristband at their arrival time. This system makes the process as fair as possible for everyone.

FOR MORE INFORMATION, VISIT

www.FriendsSchoolPlantSale.com/doing-sale

Garden Fair

Located in the circular plaza northwest of the Grandstand, where the Wristband Booth is

(See map, page 1)

EXHIBITOR HOURS

Friday 7:00 a.m.–6:30 p.m.
 Saturday 8:30 a.m.–6:00 p.m.
 Sunday 9:00 a.m.–2:00 p.m.

Some exhibitors may be open shorter or longer hours.

Some may not be open on Sunday.

A&T Designs

Metal art wind balancers. 651-322-0362



Cowsmo

Fifth-generation dairy farmers from near Cochrane, Wisc. We make and sell the finest cow manure compost, organic compost and potting soils throughout the Midwest. Check our website for local businesses in the Twin Cities and suburbs where the compost is sold.

CowsmoCompost.com

Down Home Enterprises

Garden art, from rusty garden flowers to a mix of stained glass to bird feeders to kinetic movement. Steel, glass, stone and antique finds. Whimsical snails, insects to enjoy in your garden setting.



facebook.com/DownHomeSculptures



Ewe & Me Wool Company

Made by two shepherds in Eau Claire, Wisc. Woolly Belly Pellets are a natural fertilizer. They hold moisture, require less frequent watering, and are a sustainable replacement for peat moss.

Also available: Sheepy Shreds wool mulch to hold water, stop weeds, and regulate soil temperature.

www.woollybellypellets.net

EZSwap Pots

A brother duo from Wisconsin makes fabric liners as an alternative to coco liners for your hanging planters. We also make unique fabric transplantable pots that truly make transplanting easy.



ezswappots.com or Facebook @ezswappots



Garden Creations by Pam

Handmade windchimes and suncatchers made from Lake Superior driftwood, cowbells from India, homemade hooks, resin figures, wooden beads, glass beads and crystal prisms.

www.facebook.com/pam.loveing.what.I.do

Holistic Health Farms

Reasonably priced burlap coffee bags for weed barrier and a million other purposes. (Located outside the plant sale's exit door.) Off-site pickup can be arranged. Contact Timothy Page at phone: 651-271-3795; email: tpage4@gmail.com



KM Leaves

Each colorful leaf cast is a unique piece of art for home or garden—we start by picking an individual leaf, which is cast and then hand painted

using outdoor acrylic paints. Display indoors or outdoors! All leaves are handmade in Roseville, Minn.

kmleaves.com

Minnesota State Horticultural Society (MSHS)

Frustrated by the mountain of inaccurate or irrelevant growing info for northern gardeners? We get it—we live and garden in a short season, too. For almost 160 years, MSHS has been supporting northern gardeners of all ages and skill levels with *Northern Gardener* magazine, classes, an online Resource Hub, blog, and bimonthly enews. Find growing tips and inspiration for this area, so you can spend less time digging for info and more time enjoying your garden. Members save \$5 on a purchase of \$50 or more at the Friends School Plant Sale, among other discounts. Not a member? Join our growing northern gardener community today!



northerngardener.org/membership/become-a-member

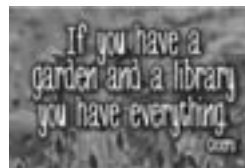
Minnesota Water Garden Society (MWGS)

See the plant listing on pages 6 and 7. MWGS was founded to increase the enjoyment and enthusiasm for water gardening through promotion, education and shared experiences. We will be selling a wide variety of plants that grow in water or like wet feet. Check out all the activities and great water garden resources at mwgs.org, follow us on Facebook or visit us during the Garden Fair to find out more.



Northern Sun

Products for progressives since 1979: social justice, environmental, and humorous messages printed on gardening and environmentally themed T-shirts, magnets, canvas bags, stickers, buttons, and more. Located at 2916 East Lake Street, Minneapolis. northernsun.com



Petal Arts

Gather your friends and explore the art of flower pounding—a creative way to transfer natural dyes from fresh flowers and plants onto fabric or paper using a hammer. Stop by for a live demonstration and book a garden party of your own. Flower Pounding Kits are available for purchase—perfect for gifting! Winnabernard22@gmail.com



Ramsey County Master Gardeners

Selling Atlas nitrile garden gloves and offering plant and garden information from experts.



River Bend Gardens

Items to beautify your garden: amethyst garden rocks from large (for outdoor gardens) to small (for flower pots and fairy gardens); “imagination” flower pots made from antique and collectible treasures; garden sculptures and miscellaneous garden items.



Roots, Shoots & Leaves

A mobile houseplant shop offering a variety of live houseplants and accessories to make the hobby of houseplant gardening successful and fun. For the new hobbyist and the experienced plant parent. Come visit to see what's inside! rsleaves.com



Silver Stamp Company

Hand-stamped garden stakes and plant-themed keychains and bookmarks. Every letter and design is individually and carefully hand-stamped in aluminum.



etsy.com/shop/silverstampco

St. Anthony Park Garden Tour

Find out about the upcoming tour in the neighborhood just west of the State Fairgrounds. The tour is on Saturday, June 28, 2025 with tickets available in May. Musicians or artists in many gardens! www.StAnthonyParkGardenClub.com



StoneCrete

In its 14th year providing exquisite and decorative garden stones to customers. Hand-cast individually, these garden stones are rated for 4,000 psi and are made to withstand all weather conditions, both in summer and in winter.

stonecreteonline.com

Two Mikes

Green Fin Plant Care is a 100%-natural fertilizer produced responsibly from invasive carp species that are damaging Minnesota waterways. Made in the Twin Cities area, Green Fin Plant Care is great for home, garden, or field use. It contains the rich nutrients your plants and crops crave. twomikes.net



More exhibitors may be added. Please check our website for updates:

www.FriendsSchoolPlantSale.com/gardenfair

GARDEN FAIR FOOD

Food sellers keep the standard Garden Fair hours unless noted.



B'Ber Desserts

French patisserie with croissants, pain au chocolat, Kouign Amann, coffee, and more!

bberdesserts.com

Friday and Saturday only



Edina Coffee Roasters

Locally roasted brewed coffee and specialty coffee drinks. Plus locally roasted whole beans.

edinacoffeeroasters.com



Gerhard's

Bratwurst, German potato salad, mac and cheese, potato chips, and water.

gerhardsbrats.com



Pow Wow Grounds

Traditional fry bread with multiple options, including wojapi (Dakota fruit

pudding) or meat and vegetarian taco fillings. Chicken wild rice and Three Sisters soups (vegan, gluten-free). powwow-grounds.com



Taqueria el Patron

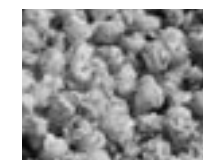
Tortas and a wide selection of customizable tacos, quesadillas, and fajita burritos, plus fresh guacamole, drinks, and more.

taqueriaelpatronmn.com



Totboss

Serving up tasty tater tot concoctions, poutine tots, loaded tots, tater tot nachos, pizza tots and more, including our NEW Dill pickle tots! totboss.com

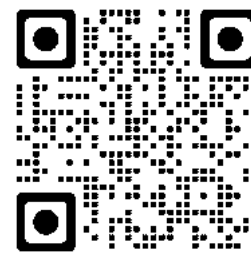


Two Rivers Kettle Korn

Popped fresh with a mix of sweet and salty. It's a State Fair treat in May!

facebook.com/tworiverskettlekorn

Hours may be later than the Garden Fair's.



Friends School of Minnesota students throwing seed bombs at Coldwater Springs as part of a project with the National Park Service.

Seeding Our Future

*Helping pollinators, getting our hands dirty,
and having a great time*

Students at Friends School of Minnesota study pollinators, their importance in ecosystems, and the many ways pollinators are threatened. They also learn about how we can all help pollinators.

Our students have taken action to protect pollinators by advocating for the elimination of neonicotinoid pesticides and working with the National Park Service to create and throw “seed bombs” to restore native habitat that is beneficial for pollinators (pictured above).

Over the past few years, we have hosted seed bomb booths at local festivals and at the plant sale.

Creating seed bombs is mission-aligned for our school and allows us to take a topic we study at school and share it with the broader community. The more we can help restore native habitat the better.



Make a seed bomb with us at the Friends School Plant Sale!

Find us at select times on Friday and Saturday to get your hands dirty and make a seed bomb. You can take the seed bomb with you and throw it where you would like to encourage native plants to grow. Look for us in the Garden Fair. A schedule will be posted at the tent. This is free and all ages are welcome—from 2 to 102!

The seed mix we use: “Insectopia” comes from Prairie Moon Nursery based in Winona, Minnesota.

Vegetables

Vegetables want to grow in full sun unless otherwise noted. ☉☽☿

We accept checks, cash, Amex, Visa, MasterCard, Discover, and Apple Pay

Key

- ☉ Full sun
- ☉☽ Part sun/part shade
- Shade
- 🐝 Attractive to bees
- 🐦 Audubon-endorsed
- 🦋 Butterfly-friendly
- 🐦 Hummingbird-friendly
- 🌿 Attractive foliage
- 🍴 Culinary
- 🌸 Edible flowers
- 🌿 Ground cover
- 🍵 Medicinal
- 🇺🇸 Minnesota native
- 🌿 Rock garden
- ❄️ Cold-sensitive: keep above 40°F
- ☹️ Toxic to humans
- 🔄 Saturday restock

Spinach, Malabar *Basella alba*

70 days. Unusual twining climber with edible, glossy leaves and stems. In the heat of the summer when regular spinach turns bitter, Malabar spinach is at its best. The leaves taste remarkably like traditional spinach and can be harvested generously. Use raw or cooked. White spikes of flowers are followed by dark purple berries. Used in Hmong cuisine. Also nice in a container with annuals. 36–72”h ☉☽

\$4.00—4” pot:

V232 **Green** 🌿—Green stems and leaves.

V233 **Red B. alba var. rubra** 🌿—Stems and veins on the undersides of the leaves are magenta to red. Ornamental, too.

V234 Spinach, Strawberry *Chenopodium capitatum*

90 days for berries, earlier for leaves. An edible ornamental. Tender arrow-shaped leaves and shoots taste like spinach. Cascades of showy but seedy berries ripen to bright red and have a bland taste similar to mulberries. Enjoys cooler weather, but is more heat-tolerant than spinach. This native annual grows wild throughout Minnesota, as well as much of North America and Europe. Self-seeds abundantly. Also known by the common name strawberry blite. Horticultural source. 18”h 🇺🇸 \$4.00—seed packets

Squash, Summer *Cucurbita pepo*

Will climb by tendrils, but heavier fruits need extra support. 🌿

\$3.00—seed packets:

V235 **Yellow Crookneck**—55–60 days. Mild, buttery flavor, best picked at about 6”. Bright yellow skin may turn bumpy as fruits mature. 18”h by 36”w 🌿

V236 **Zucchini, Stardust** 🌿—52 days. Abundant and uniform fruit, best harvested at 6–9”. Leaves are variegated, adding ornamental value. Open-pollinated. 🌿

\$4.00—seed packets:

V237 **Zucchini, Golden**—50–55 days. Bright yellow. Best when picked under 8”. Heavy yields on bushy plants. 🌿

Squash, Winter *Cucurbita*

Vining fall vegetables that are best after a touch of frost. Will climb by tendrils. 🌿

\$3.00—seed packets:

V238 **Acorn, Sweet REBA** *C. pepo*—90 days. Bushy, high-yielding plants. Fruits have good sugar content. Bred at Cornell University. Highly resistant to powdery mildew. Open-pollinated. 🌿

V239 **Buttercup, Burgess** *C. maxima*—95 days. Turban-shaped squash has thin, hard dark green skin, but the interior is deep orange, fiberless, and sweet. Introduced in 1932 by Burgess Seed & Plant Co. of Bloomington, Illinois, and still a widespread favorite. Each vine will produce four to five fruits that are 3–5 pounds each. Stores for several months. Vines up to 6’. 🌿

V240 **Butternut, Waltham** *C. moschata*—110–120 days. Beige, long-necked fruits. 🌿

V241 **Delicata, Honey Boat** *C. pepo*—90–100 days. Cream-colored oblong fruits with deep green stripes, up to 8” long. Up to seven fruits of 1–3 pounds each. Flavor similar to a sweet potato but easier to grow. Excellent for stuffing and baking right after harvest (no curing needed). Vines up to 6’. 🌿

V242 **Red Kuri** *C. maxima*—95 days. Smooth, onion-shaped red-orange 3-pound globes have a gold interior with a sweet chestnut flavor. Delicious baked, steamed, or stir-fried in savory dishes. Also good for making pies or breads. Stores up to three months. Also known as potimarron, onion squash, Japanese squash, orange Hokkaido, or uchiki kuri squash. 🌿

V243 **Spaghetti** *C. pepo*—90 days. When cooked, the interior walls separate into spaghetti-like strands. Oblong yellow fruits are 3–5 pounds. Introduced by Sakata Seed Co. of Japan in 1934. Stores for a few weeks. 🌿

V244 Sunchoke 🌿

Helianthus tuberosus Stampede

110–150 days. Sunflowers with edible tubers. Harvest in spring or fall to cook or roast like potatoes or eat raw for their crunchy sweetness. Bright yellow daisies in late summer smell like chocolate. Cultivar of a perennial Minnesota native that will spread, so plant where it’s contained unless you plan to harvest it heavily. Great on the alley side of a garage. Also called Jerusalem artichoke. 96–120”h 🌿🐝🦋 \$4.00—3.5” pot



Sunchoke tuber

Potato *Solanum tuberosum*

Single plants in pots or a pound of seed potatoes. Potatoes are usually indeterminate, growing in multiple layers and best planted by adding more soil on top as they grow. They have bigger harvests than determinate potatoes, which are earlier and a little easier, growing in a single layer.

\$2.50—3.5” pot:

V209 **Yukon Gold** 🌿—65–75 days. Yellow with a firm yellow interior. Early-bearing determinate.

\$5.00—1 pound of seed potatoes:

V210 **Adirondack Blue**—70–90 days. Deep purple skin and interior stay purple after cooking. Round to oblong tubers. Determinate. 🌿

V211 **Adirondack Red**—75–85 days. Bred at Cornell University, this early to mid-season oblong potato has pink skin and interior that stay pink when cooked. Determinate. 🌿

V212 **Austrian Crescent**—81–90 days. Large yellow heirloom fingerling. Long, firm tubers are good for boiling, steaming, or salads. Indeterminate. 🌿

Sweet Potato *Ipomoea batatas*

Yummy mashed or baked. Wait until the soil is fully warm to plant in June or early July. Keep them warm in the meantime, and when planted, needs a warm location. You can plant as is, but it’s best to take slips from the plant and stick directly into the ground, keeping the soil very moist for the first week or so. A new plant will grow from each node planted. 🌿

\$3.00—3.5” pot:

V245 **Beauregard** 🌿—100 days. Copper-colored, inside and out.

V246 **Purple Majesty** 🌿—110 days. New variety from North Carolina State University with purple interior and skin. Rich in anthocyanins.

V247 Tatsoi *Brassica rapa* Scarlet Red 🌿

25 days for baby leaves, 45 days for plants. Spoon-shaped reddish purple leaves with green undersides retain color when cooked. 6–8” heads. ☉☽

\$6.00—6 plants in a pack

Tomatillo *Physalis ixocarpa*

Round fruits with a papery husk; remove husk before eating. Vining plants, easy to grow. Sweet-tart flavor great in salsas and sauces. 🌿

\$2.50—3.5” pot:

V248 **Cisneros Grande** 🌿—85 days. Average fruits are the size of a golf ball but can grow up to 2.5” in diameter and will turn more yellow-green as they ripen. One of the largest tomatillos you can grow, making harvest and husking easier.

V249 **Purple** 🌿—90 days. Slightly smaller and sweeter than green tomatillos. Makes beautiful purple salsa and is great grilled. Grow more than one plant for good pollination.

V250 **Tomate Verde** 🌿—75 days. Green fruits, excellent for salsa verde.

\$3.50—4” pot:

V251 **Giant Yellow** 🌿—70 days. Large, mild-flavored, juicy pale yellow fruit. Good producer.

Tomato, Heirloom see page 17

Tomato, Other see page 18

Watermelon *Citrullus lanatus*

Large vining plants with sweet, juicy fruits. 🌿

\$3.00—seed packets:

V324 **Blacktail Mountain**—76 days. A standout melon for short, cool seasons. Fruits are 8” across and 6–10 pounds. Can harvest just before ripe and store for up to two months. Open-pollinated. 🌿

V325 **Crimson Sweet**—85 days. Blocky 20-pound fruits have a deep red interior famous for high sugar content and great taste. Beautiful pale green rind with dark green striping. Resistant to fusarium wilt and anthracnose. 🌿

V326 **Moon and Stars**—81–90 days. Surprising yellow dots and spots sprinkle both the dark green melon and the leaves. Seeds will produce the same plant next year. Melon weighs 20–40 pounds. 6–12”h by 48–72”w 🌿

V327 Wonderberry *Solanum retroflexum* 🌿

50–75 days. Produces abundant small berries that turn dark blue when ready to eat. The taste is reminiscent of ground cherries, but sweeter. Ripe berries make a pleasant snack raw, but truly shine when cooked or sweetened. Looks similar to black nightshade, a close relative, but with more reliably delicious fruit and productivity. Unripe berries may be toxic so only eat fruit that has fully changed color. Also known as sunberry. Self-seeding annual. 12–24”h ☉ \$3.00—3.5” pot

So Much Spinach

How often do you think about spinach? If you are like me, it’s only in the produce aisle when you need something green that lasts a long time and you can’t bear the idea of eating any more kale. Sure, spinach is a superfood with tons of vitamins and minerals and antioxidants and all the good stuff, but is it exciting? Is it romantic? Has it ever, ever been the stuff of dreams? I don’t think so.

And yet, if you very carefully read the catalog, this year you will find SEVEN (7) different plants, in addition to actual spinach, that have spinach in their names. Like spinach, they’re all leafy and green and edible, but there are a lot of differences too. Some are vining, some don’t taste like spinach, and one even grows in the shade. If you’re looking to shake up your vegetable game but like the nutrition and reliability of spinach, take a look.

V059 **Perpetual Spinach Chard**. This one is an old Italian heirloom chard. It’s in the same family as spinach, and apparently the young leaves taste a bit like spinach (the older ones less so) and it looks more like spinach than chard. But it’s still chard.

V118 **Spinach Lettuce Romaine**. In spite of having a ridiculously long name, each word of which is a different type of green, this is lettuce. It’s in the Daisy family, not the Amaranth family of spinach and the like, but it looks a lot like a rosette of spinach and has spinach’s improved nutrition as well.

V230 **Caucasus Mountain Spinach**. This one is very different from spinach, and from most vegetables, in that it is a twining vine, it grows in the shade, and it’s perennial. Its relationship to spinach comes from the flavor, not the finer texture, of its heart-shaped leaves.

V231 **Aunt Lilli’s Spinach Hibiscus**. Probably the most unusual and the least spinach-y on this list. It has lots of other common names that don’t include spinach, such as South Sea salad tree, sunset muskmallow, and slippery cabbage. It’s a large tropical shrub that has hibiscus-like flowers and leaves variegated with pink and burgundy. A member of the Mallow family, it’s related to cotton and okra, and you can eat any part of the plant, flowers included. Why the spinach in its name? Because its nutritious leaves can be used like spinach. That’s about the extent of it.

V232 **Malabar Spinach, green**. It’s pretty closely related to spinach, but it’s a twining vine that thrives in the heat of the summer when spinach gets bitter. Leaves taste like spinach but are thicker and chewier.

V233 **Malabar Spinach, red**. Similar to green, except this one has red stems and veins. Quite lovely in a pot.

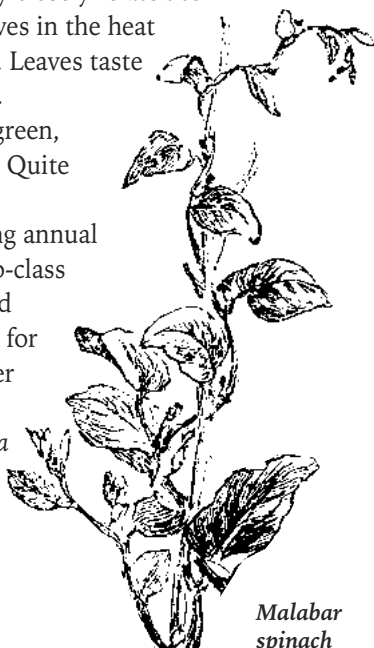
V234 **Strawberry Spinach**. A self-seeding annual native to Minnesota, it’s in the same sub-class as spinach, but it grows edible leaves and berries. The leaves are a good substitute for spinach, the bright red berries are seedier and milder tasting than strawberries.

—Toria

Remember:

“I’m strong to the finish,
'cause I eats me spinach.”

—Popeye the Sailor Man



Malabar spinach



Potatoes

Annuals



Plant widths are similar to their heights unless noted otherwise.

Zinnia Zinnia

Bright colors and continuous bloom, especially with frequent cutting. Long-lasting cut flowers. Make sure they have adequate air circulation to reduce mildew. Easy from seed. Deer-resistant. ○

\$2.69—seed packets:

A425 **Persian Carpet Mix** *Z. haageana*—A sparkly mix of 2" double to semi-double flowers in yellow, orange, mahogany, gold, and burgundy with a few cream and red flowers thrown in. Most flowers are bicolor with contrasting centers or petal tips. A tough plant that thrives despite heat, drought, and wind. Best to direct sow since it does not enjoy being transplanted. Blooms steadily mid-summer to frost. A different species than garden zinnias, it has narrower leaves and is bushier. 1952 All-American Selections winner. 16" h 🌱🌿

\$3.00—seed packets:

A426 **County Fair Blend** *Z. elegans*—Yellow, purple, red, and pink mix of 2–5" flowers. 24–36" h 🌱🌿

A427 **Orange**—4–6" flowers with great vase life. Heat- and cold-tolerant, and long-blooming once started. 40–50" h 🌱🌿

\$4.00—seed packets:

A428 **Jazzy Mix** *Z. haageana*—A kaleidoscope of color and pattern. Semi-double to double burgundy, chestnut, yellow, and orange with cream, red, or yellow tips. 24–36" h 🌱

A429 **Whirlygig Mix** *Z. elegans*—Bright 4" flowers, most with contrasting color on serrated petal tips. Colors include cream, pink, deep rose, scarlet, yellow, and orange. Single to semi-double daisies on bushy plants. 20" h 🌱🌿

\$3.50—4 plants in a pack:

A430 **Lilliput Mix** *Z. elegans*—This zinnia series is a particular magnet for butterflies. Shades of rose, carmine, orange, coral, white, yellow, and violet. 18–24" h 🌱

A431 **State Fair Mix** *Z. elegans*—Huge flowers up to 6" across. Red, orange, yellow, pink, purple, white, and bicolors. Good for cutting. 36–48" h 🌱

A432 **Swizzle Cherry Ivory** *Z. elegans*—3.5" bicolor. 6–12" h

Zinnia continued

\$6.00—6 plants in a pack:

A433 **Benary's Giant Lime** *Z. elegans*—Fully double chartreuse 4–5" flowers. 40–50" h

A434 **Benary's Giant Mix** *Z. elegans*—Fully double 4–5" flowers in a rainbow of colors. 40–50" h

A435 **Benary's Giant Wine** *Z. elegans*—Fully double burgundy 4–5" flowers resembling double dahlias. 36" h

A436 **Cupcakes Deep Orange** *Z. elegans*—Intense reddish orange 2" double flowers with a sprinkling of gold around the center. The many layers of petals do look the way an overly enthusiastic cupcake decorator might make a frosting flower. There will be a few semi-double and single flowers, too. Great cut flower and dries well. 24–30" h

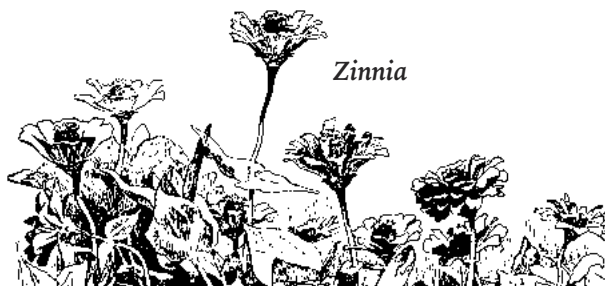
A437 **Hidden Dragon** *Z. elegans*—Soft red petals tipped in white on 3" flowers that become more layered over time. 24" h by 12" w 🌱

A438 **Inca** *Z. elegans*—Sun-worshipping fiery orange 5" double flowers. Looks great with blue salvia. 36–40" h

A439 **Queeny Lemon Peach** *Z. elegans*—Yellow 2–3" flowers with a ruby-coral center turn pale pinky orange. Fully double and semi-double flowers with a few singles. 30–40" h 🌱🌿

A440 **Queeny Lime Orange** *Z. elegans*—A 3" globe of deeply fluted petals that shade from salmon or coral through peach to slightly greenish yellow, then lighten as the blossom develops. Rosy red center. Mostly double and semi-double. Lasts about three weeks as a cut flower. 24–40" h 🌱

A441 **Queeny Lime Red** *Z. elegans*—Muted burgundy outer petals grade to lime around the center with shades of rose, mauve, and soft chartreuse. Each flower a little different. Double or semi-double. 40–50" h 🌱



Zinnia

Zinnia continued

\$9.00—6 plants in a pack:

A442 **Zowie! Yellow Flame** *Z. elegans*—Each flower opens as a single 3–5" yellow daisy with magenta near the center, then day by day adds more layers of petals while changing to orange-red with gold tips. The dark red central cone is interesting, too: quite prominent at first and then it retreats under the additional petals, but always with a ring of starry yellow mini-flowers (florets) like a crown. Lasts up to two weeks as a cut flower. Monarchs love this variety and goldfinches enjoy the seeds. AAS Winner 2006 and many gardeners' favorite zinnia. 24–36" h 🌱🌿

Zinnia, Compact Zinnia

Compact with bright, clear colors. Easy to grow and blooms until frost. ○

\$3.00—seed packets:

A443 **Thumbelina Mix** *Z. elegans*—Bright and pastel doubles and semi-doubles. 12–16" h 🌱🌿

\$3.50—4 plants in a pack:

A444 **Profusion Cherry** *Z. elegans*—Compact, mound-forming, mildew resistant. 12" h 🌱

A445 **Profusion Cherry Bicolor** *Z. elegans*—Semi-double 2" white flowers that mature to deep cherry as each petal's central pink stripe spreads outward. 12" h 🌱

A446 **Profusion Mix** *Z. elegans*—Mix of other Profusion series flowers, including Deep Apricot, Cherry, Fire, Orange, and White. 12" h 🌱

A447 **Profusion Orange** *Z. elegans*—12" h 🌱

A448 **Zahara Double Raspberry Ripple** *Z. marylandica*—Semi-double 2.5" flowers are pink and white striped. The white petal margins are tinged with pink in cooler weather, becoming whiter in hot weather. 16–20" h

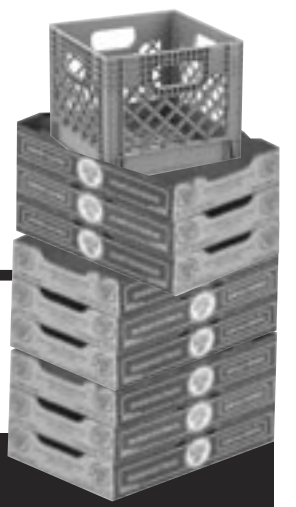
A449 **Zahara Starlight Rose** *Z. marylandica*—2.5" bicolor, white with a rose starburst in the center. 8–12" h 🌱

A450 **Zahara Sunburst** *Z. marylandica*—Large, vibrant yellow blossoms reveal dark central stripes that widen later in summer and fall. 12–18" h

\$6.00—6 plants in a pack:

A451 **Zahara Double Salmon Rose** *Z. marylandica*—Bright, slightly orange pink. 16–20" h

Plants marked with  are especially good for bees



Zero Waste 2025 Update



Each year, our commitment to running a Zero Waste effort at the plant sale continues to grow—just like our gardens. Our goal is to compost or recycle at least 90% of the waste generated at the plant sale.

The Minnesota State Fairgrounds has applauded our efforts as the rare event that

leaves the site as clean as (or better than) we found it. We started in 2023, expanded in 2024, and are continuing to refine in 2025.

Before and after the plant sale, we set up a system to collect and recycle waste from pallets and big shipments. During the sale, volunteers are at each station to help ensure proper sorting. We've worked with food vendors to get only recyclable or compostable cups, bowls, utensils, and plates. This year our intention is to support your own zero waste journey at home.

Stop by the Zero Waste tent for current information, links, and networking for waste management ideas in your own home and garden.

We'd love to see you there!
—Debbie and Maggie

Bring Your Own Box Raffle

Last year we launched the Bring Your Own Box Raffle, and it was so successful we're expanding it this year! While we get strawberry boxes donated, Friends School Plant Sale also purchases a large number of cardboard trays for our customers. Every container that you bring is one less we need to buy or gather from a grocery store. When you bring a container, you save our fundraiser money and help reduce waste.

Enter the raffle to win prizes! One free ticket for each container:

Any container that you provide to carry your plants home earns you one ticket. Eligible containers include cardboard boxes, wagons, carts, reusable plastic crates, and more. If you bring it, we'll reward it with a ticket.

At the end of the sale, we'll draw raffle tickets and **five lucky winners will each get a pair of #1 wristbands for the 2026 sale.** These will get you and a friend into the very first entrance group on a day of your choice—no waiting in line!

Get your tickets at the Zero Waste tent in the Garden Fair.

Drop your tickets into a raffle box at the Zero Waste tent, near the checkout line entrance, or at the cashiers.



We've Moved the Parking Lot,



Wristband Booth and Garden Fair are moving north

Both the Booth and the Fair are now located in the plaza that's northwest of the Grandstand, up Liggett Street from Dan Patch Avenue (see map).

New parking lot location

Customer parking is now located in the giant lot northwest of the Garden Fair plaza, with accessible parking just north of the plaza area.

If you've ever taken a park and ride to the State Fair, this is the parking lot where all the buses drop off.

Note: there will be no plant sale parking in the Midway lot.



The Google Maps address of the new parking lot is 1800 Randall Avenue. The Metro Mobility drop-off address is 1710 Randall Avenue.

Why the changes?

If you've shopped the plant sale before, you may have noticed the Horse Show at the State Fair Coliseum on the same weekend.

In past years, both events had parking in the same lot (the Midway) and competed for parking on the same streets. Minnesota State Fair officials want to better manage the traffic snarls and keep the two events more separate. To help do this, plant sale parking is moving north to the Transit Hub lot.

With our parking moved to that lot, the Wristband Booth needed a more convenient location right next to the new parking lot, and the Garden Fair along with it.

Benefits

Our new parking lot is almost 50% larger than the Midway lot. The shape of the lot also means parking spaces are, on average, 20% closer to the new Wristband Booth location. Even the farthest spots are 30% closer to the Garden Fair than the farthest spots in the long, narrow Midway lot.

In addition, the paved surface of the Transit Hub parking lot is brand new, vs. the Midway, which is mostly unpaved and sometimes hazardous. The new lot also has a better option for accessible parking near the Wristband Booth. And there's more space and level ground in the Garden Fair area as well, with more seating available.

The move also allows us to make the traffic pattern around the curbside pickup area simpler and safer for everyone. Drivers will now approach Curbside Plant Pickup from the west — the opposite direction than in the past — and all of Dan Patch Avenue will be one-way going east.

Garden Fair, & Wristband Booth



Driving directions

From the west on **Commonwealth Avenue**, turn left on Randall and proceed until you see the parking lot entrance.

From the north on **Larpenteur Avenue**, go through the State Fair’s Underwood gate, then turn right on Randall and proceed until you see the parking lot entrance.

From the east on **Snelling Avenue**, go through the State Fair’s Main Gate and continue straight. Turn right on Underwood, then left on Randall and proceed until you see the parking lot entrance.

From the south on **Como Avenue**, go north through the State Fair’s Underwood gate (by the Haunted House) then turn left on Randall and proceed until you see the parking lot entrance.

Questions

Can I still park on the streets?

We strongly recommend parking in the Transit Hub lot, as it will be the closest to the Garden Fair, Curbside Pickup, and the Wristband Booth (as well as the line that extends out from the Booth in the mornings). Street parking is still allowed, though some streets will be closed off, or have restricted parking.

Can I still park in the Midway lot?

No. This year the Midway lot will not be available for parking, and in future years it will be solely for Horse Show parking.

Where is the Wristband Booth?

The Wristband Booth will be located on the west side of the Garden Fair plaza, closest to the parking lot.

Where do I line up for wristbands?

The wristband line will extend out of the plaza gate and along the southern edge of the Transit Hub parking lot. If you arrive in the morning before the Wristband Booth opens, parking in the Transit Hub will be most convenient.

Is there accessible parking?

Yes. See the “Accessibility” section to the left for more information.

Where are the bike racks?

There will be bike racks on the northwest corner of Liggett and Dan Patch.

Where is the Minnesota Water Garden Society?

MWGS will be located in the new Garden Fair location, in the northeast corner of the plaza.

Food trucks?

Food trucks will be located just south of the Garden Fair plaza, along the sides of Liggett Street.

Restrooms?

There is a State Fair restroom building at the southwest corner of Liggett and Dan Patch. We will also have a limited number of portable restrooms available closer to the Garden Fair, outside the Garden Fair entrance gates. Once you are inside the plant sale, there are restrooms at both back corners of the Grandstand.

What about Curbside Pickup?

Curbside Plant Pickup will be in the same location, west of the Grandstand. The only difference is that the driving direction has been reversed, to accommodate the new parking lot. There will be plenty of help directing you to the correct location!

I need better driving directions!

We have more detailed instructions and a Google map with our recommended driving directions here: [FriendsSchoolPlantSale.com/driving](https://www.friendschoolplant.com/driving)

Accessibility

We have designated the southeast corner of the Transit Hub lot as accessible parking. From that lot, there is a close entrance into the Garden Fair. There will be volunteers near this entrance who can help with any questions or needs that you have.

There is also a drop-off area near the accessible entrance outside the Garden Fair, and a portable accessible restroom between the general and accessible entrances, on the parking lot side.

We do want to note that Liggett Street, the path between the Garden Fair and the Plant Sale, is at about a 4% grade.

If you have any questions or concerns, please call us at 651-621-8930 with any type of accessibility question, or email info@FriendsSchoolPlantSale.com.

Help us out

If you have friends who shop at the plant sale, please let them know about these changes. This is a big difference from previous years. The more people who know about it ahead of time, the better!



ILLUSTRATION BY RUBY THOMPSON, FRIENDS SCHOOL ALUM

Buy a Friends School Plant Sale T-Shirt
 Available only through pre-purchase at Branding Wearhouse.
 You can scan the QR code above or go to [friendschoolmn.brandingwearhouse.com](https://www.friendschoolmn.brandingwearhouse.com)
 and buy the t-shirt at the Friends School of Minnesota web store.