

Minnesota Plant Society Directory 2007

AFRICAN VIOLET

African Violet Society of Minnesota

Website: www.mninter.net/~rebels/AVSM_Page.html

Publication: *Violet Press*, four per year

Meetings: Second Tuesday of September, January, February & May

Show schedule: Spring, State Fair (two days) and Fall shows

Contact: Ellen Frilseth
1480 Applewood Court, Apt. 206
Roseville, MN 55113
651-487-5555
efrilseth@earthlink.net

Dues: Individual: \$12.00
Associate: \$6.00
Affiliated Clubs: \$12.00
Commercial: \$15.00

Lakes Area Violet Growers

Website: www.rosebudm.com/lavg

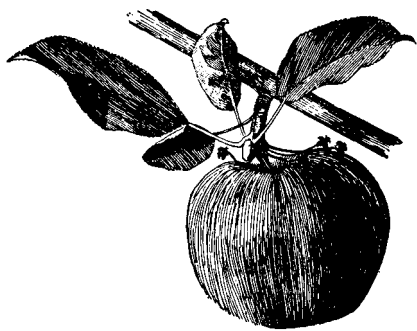
Publication: *LAVG Newsletter*

Meetings: Third Saturday of every month at 11:00 a.m. at Vadnais Heights Fire Station, County Road E at Arcade

Show schedule: Spring and Fall Show/Sale

Contact: Jean Ness
3667 Midland Avenue
White Bear Lake, MN 55110
(651)429-4109
judeneumann@msn.com

APPLE



Minnesota Apple Growers Association

Website: www.minnesotaapple.org

Meetings: Annual meeting in January

Show schedule: Orchard tour in July

Contact: Ralph Yates
P.O. Box 23

LaCrescent, MN 55947
507-895-4750

info@minnesotaapple.org

Dues: Per orchard \$100 + \$1.25 per acre

BONSAI

Minnesota Bonsai Society

Website: www.minnesotabonsai.com

Publication: Newsletter, online

Meetings: Monthly except January, first Tuesday at 7 p.m., at Hamline United Methodist in Saint Paul

Contact: P.O. Box 32901
Minneapolis, MN 55432
612-339-8808 answer line

Dues: Individual: \$35.00
Family: \$40.00

CHESTNUT



The American Chestnut Foundation

Website: www.acf.org

Publication: *Journal of the American Chestnut Foundation*

Meetings: See website

Primary contact: Marshal T. Case,
President & CEO
469 Main Street, P.O. Box 4044
Bennington, VT 05201
802-447-0110
chestnut@acf.org

Secondary contact: Phillip A. Rutter,
Badgersett Research Farm
RR 1, Box 141
Canton MN 55911
507-743-8570

Dues: Regular: \$40.00
Student: \$15.00

CONIFER

American Conifer Society

Website: www.conifersociety.org

Publication: *Conifer Quarterly*

Meetings: See website

Primary contact: John Martin
Box 3422
Crofton, MD 21114

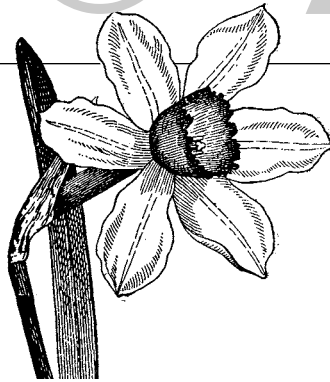
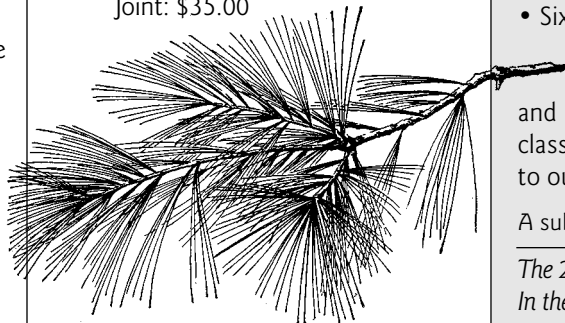
410-721-9636
conifersociety@aol.com

Local contact: Rick Rodich

952-446-9272
rrodich@juno.com

Dues: Individual: \$30.00

Joint: \$35.00



DAFFODIL

Daffodil Society of Minnesota

Website: <http://daffodilmn.org>

Publication: Meeting notices only

Meetings: Annual Meeting in January

Show schedule: Flower Show in May and Bulb Sale in September

Contact: Edie Godfrey
4050 Kings Point Road
Minnetrista, MN 55331
952-472-5623
ediegodfrey@yahoo.com

Dues: Yearly: \$5.00

DAHLIA



Minnesota Dahlia Society

Website: www.minnesotadahliasociety.org

Meetings: Second Monday each month, call for details

Show schedule: Last two days of Minnesota State Fair & fall show at Bachman's on Lyndale; tuber sale in spring

Contact: Carolyn Koehlers
651-917-3591
mickeynurse@yahoo.com

Dues: Individual: \$17.00
Family: \$20.00

DAYLILY

American Hemerocallis Society, Region 1

Website: www.daylilies.org or
<http://northerndaylily.com>

Publication: *Daylily Journal* four times per year; regional newsletter two times per year

Meetings: Symposium in winter and regional meeting in July; local garden tours and display gardens, see website

Additional benefit: New members receive \$25 daylily voucher

Contact: Kathleen M. Lamb
10910 109th Avenue North
Champlin, MN 55316
763-422-0015
kmlamb@earthlink.net

Dues: Individual: \$25.00
Dual: \$30.00
Youth: \$10.00
Lifetime: \$500.00



Hemerocallis Society of Minnesota

Publication: *HSM Bulletin*, three issues per year

Meetings: February and November, at various locations

Show schedule: Sale in May; show and garden tours in July; banquet/auction in August

Contact: Karol Emmerich
7302 Claredon Drive
Edina, MN 55439
952-941-9280
KDEmmerich@aol.com

The Society for ALL Gardeners

You can join the Minnesota State Horticultural Society by going to the MSHS website, www.northerngardener.org.

The *Northern Gardener*-level membership (\$60 annually) includes:

- Six issues of *Northern Gardener* magazine
- Discounts on plant purchases with nurseries and greenhouses; over 100 locations to choose from
- Two free tickets to the Minneapolis Home and Garden Show and St. Paul Home and Patio show
- A 15% discount on merchandise with MSHS
- Discounts on classes and tours with MSHS and the Minnesota Landscape Arboretum
- Access to our library of over 2,000 books

A subscription-only level is also available to *Northern Gardener* magazine, \$34 annually.

The 2007 Plant Society Directory is compiled by the Minnesota State Horticultural Society. In the spirit of collaboration, Friends School is publishing it here as a public service.

Minnesota Plant Society

ELOISE BUTLER WILDFLOWER GARDEN & BIRD SANCTUARY



Friends of the Wildflower Garden
Website: In development
Publication: *Fringed Gentian*, quarterly
Meetings: Annual meeting in May
 2007 is 100th Anniversary of Eloise Butler Wildflower Garden and Bird Sanctuary!
Contact: Joy Davis
 1089 Cedar View Dr.
 Minneapolis, MN 55405
 612-374-4503
Dues: Individual: \$10.00
 Family: \$15.00

FRUIT AND VEGETABLE TRADE



Minnesota Fruit and Vegetables Growers Association
Website: www.mfvga.org
Publication: *MFVGA Newsletter*
Meetings: Annually between January and February
Show schedule: Upper Midwest Regional Fruit & Vegetable Growers Conference & Trade Show
Contact: Marilyn Johnson
 15125 West Vermillion Circle
 Ham Lake, MN 55304
 763-434-0400
 info@mfvga.org
Dues: Associate membership: \$25.00
 Regular membership: Based on gross sales

GARDEN CLUB

Federated Garden Clubs of Minnesota
Website: www.fgcmgardenevents.org
Publication: *Federated Newsletter*, bi-monthly
Meetings: Quarterly meetings with speakers; local clubs meet monthly
Show schedule: Flower Show two days at Minnesota State Fair
Contact: Barbara Isaacson
 15169 19th Street Court North
 Stillwater, MN 55082
 651-998-1200
Dues: Yearly: \$7.50



GESNERIAD

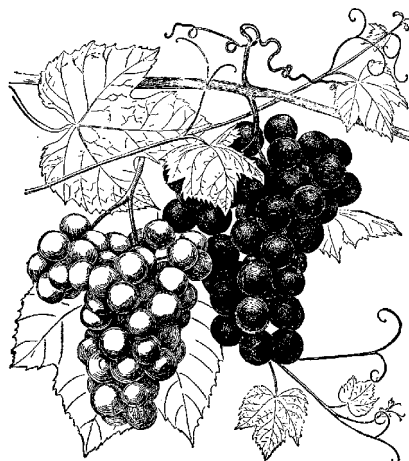
Gesneriad Society, Twin Cities Chapter
Website: http://groups.yahoo.com/group/AGGSTC/
Meetings: 4th Tues. of the month at 6:30pm, St. Christopher's Episcopal Church, Roseville
Contact: Mike Bagstad
 1776 Fry Street
 Falcon Heights, MN 55113
 651-646-5003
 Kate@bagstad.com
Dues: Individual: \$3.00

GLADIOLA

Minnesota Gladiolus Society
Publication: *Glad Fan*, six issues per year
Meetings: Flexible
Show schedule: Second weekend in August; First weekend of Minnesota State Fair; corm sale at April meeting
Contact: Linette Sorrentino
 10255 Jersey Avenue
 Chaska, MN 55318
 952-368-3218
 dakotahgirl@prodigy.net
Dues: Single: \$10.00
 Family: \$12.00



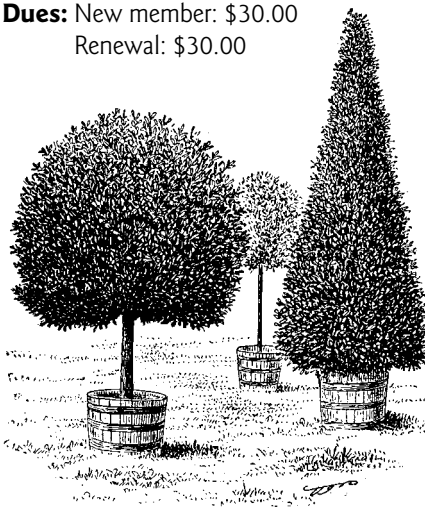
GRAPE



Minnesota Grape Growers Association
Website: www.mngrapes.org
Publication: *Notes from the North*, quarterly
Meetings: Annual meeting in January
Show schedule: Tour/picnic in July; U of M HRC grape tour in fall
Book for sale: *Growing Grapes in Minnesota* \$15
Contact: Paul Neyers
 3725 14th Avenue South
 Minneapolis, MN 55407
 612-644-0366
 paul.neyers@mngrapes.org
Dues: Yearly: \$35.00

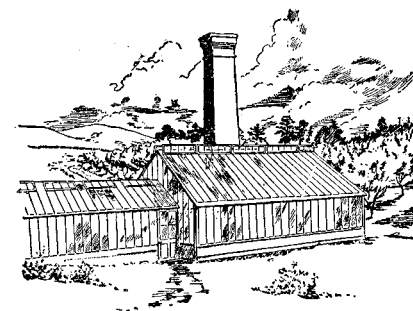
HERB

North Country Herbalist Guild
Website: www.nchg.org
Meetings: Monthly meetings and classes
Herb walks: In summer
Contact: PO Box 4186
 Saint Paul, MN 55104
 612-827-2570
 bod@nchg.org
Dues: New member: \$30.00
 Renewal: \$30.00



Minnesota Herb Society, Inc.
Meetings: Fourth Tuesday of the month during January, March, May, August, and October
Show schedule: Shows at the Arboretum in Chanhassen
Contact: Carolyn Earl
 509 North German Street
 New Ulm, MN 56073
 507-359-9176
 laearl@newulmtel.net
Dues: Active: \$10.00
 Supporting: \$15.00

HOBBY GREENHOUSING



Minnesota Hobby Greenhouse Society
Meetings: Quarterly
Contact: Malcolm Burleigh
 947 Portland
 Saint Paul, MN 55104
 651-227-7119
 mburleigh@isd.net
Dues: Single: \$7.00
 Couple: \$10.00



HORTICULTURE

Duluth Garden Flower Society
Website: www.dgfs.us
Show schedule: Plant Sale in May, Secret Garden Tour and Annual Flower Show in July
Contact: Tom Kasper
 218-724-4921
Dues: Included in garden club dues

MINNESOTA STATE HORTICULTURAL SOCIETY

Minnesota State Horticultural Society
Website: www.northerngardener.org
Publication: *Northern Gardener*, six issues a year
Contact: Center for Northern Gardening
 1755 Prior Ave. No.
 Falcon Heights, MN 55113
 651-643-3601, 800-676-6747
 lisaw@northerngardener.org
Dues: Individual, includes subscription: \$60.00
 Subscription only: \$34.00

Directory 2007

HOSTA



Midwest Regional Hosta Society

Website: www.midwesthostasociety.org

Publication: *Hosta Leaves*, twice yearly

Meetings: Winter scientific meeting in January; annual convention in summer

Contact: Tom Micheletti
23720 Hearthside Dr.
Deer Park, IL 60010
847-540-8052
tommich@hostapatch.com

Dues: Two years: \$20.00

Minnesota Hosta Society

Website: www.mnhosta.org

Publication: *Hostaphile*

Meetings: Meetings, garden tours and auction

Show schedule: Sometimes
Contact: Mary Schwartzbauer
17190 Neill Path
Hastings, MN 55033
651-437-8899

Dues: Two years: \$10.00

Shades of Green Hosta Society of Southeast Minnesota

Website: www.soghs.org

Publication: *Society Newsletter*

Meetings: Educational programs, garden tours, plant sale/swap and other group activities

Contact: Cindy Tomashek
1288 Wicklow Lane SW
Rochester, MN 55902
507-289-2614
PrestonPlants@aol.com

IKEBANA



Ikebana International, Mpls/St. Paul Chapter #121

Publication: *Ikebana International Magazine*, three times a year

Meetings: 9-10 per year

Show schedule: Art in Bloom at Minneapolis Institute of Arts in April, plus several others

Contact: Donna Winberg
952-475-1491
dwinberg@aol.com

Dues: Yearly: \$65.00

INDOOR GARDENING

Indoor Gardening Society of America

Meetings: Call for meeting information.

Show schedule: Occasionally

Contact: Susan Kennedy
4052 Bryant Avenue South
Minneapolis, MN 55409
612-822-0635
smkennedy_mn@yahoo.com

Dues: Yearly: \$10.00

IRIS



American Iris Society Region 8 MN/WI

Website: www.irises.org

Publication: *AIS Bulletin* quarterly

Meetings: Semi-annual.

Show schedule: Varies

Contact: William Dougherty
7420 Concerto Curve
Fridley MN 55432
763-785-2543
wmcougherty@cs.com

Dues: See website.

Iris Society of Minnesota

Website: www.irismn.org

Publication: Newsletter

Meetings: See website for calendar

Show schedule: Midseason Iris Show first weekend in June and Iris Sale at Arboretum in August

Contact: Barbara Sautner
2100 West 106th Street
Bloomington, MN 55431
952-884-8254
bjstaxservice@aol.com

Dues: Youth for two years: \$4.00
Single for two years: \$10.00
Family for two years: \$14.00

LANDSCAPE ARCHITECTURE

American Society of Landscape Architecture, Minnesota Chapter

Website: www.masla.org

Publication: *Scape*, quarterly

Contact: Ellen Stewart
275 Market St., Suite 54
Minneapolis, MN 55405
(612) 339-0797

LAWN

Minnesota Turf and Grounds Foundation

Website: www.mtgf.org

Publication: *Clippings*, semi-annually

Show schedule: Minnesota Green Expo in January, U of M Field Day in summer

Contact:

Larry Vetter, MTGF Executive Director
422 Alderman Hall, 1970 Fowell Ave.
St. Paul, MN 55108
612-625-9234
vette008@tc.umn.edu

LILAC

International Lilac Society

Website: www.internationallilacsociety.org

Meetings: See website

Primary contact: William Tschumi
3 Paradise Court
Cohoes, NY 12047
info@internationallilacsociety.org

Dues: Yearly: \$20.00

LILY



North Star Lily Society

Website: www.northstarlilysociety.com

Publication: *North Star Lily News*

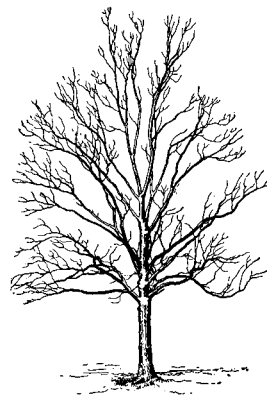
Meetings: March and September educational meetings

Show schedule: Show in summer, bulb sales April and October

Contact: Patti Reynolds
7116 - 39th Avenue North
New Hope, MN 55427

Dues: Two years: \$10.00

MAPLE SYRUP



Minnesota Maple Syrup Producers Association

Website: www.mnmaple.org

Publication: *Minnesota Maple News*, three times a year

Meetings: Annual meeting in May

Contact: Stu Peterson
31494 395th Street
Bent, MN 56528
218-758-2796
campaquila@aol.com

Dues: Individual: \$20.00
Family: \$25.00

MUSHROOM



Minnesota Mycological Society

Website: www.minnesotamushrooms.org

Publication: *The Toadstool Review*, six times a year

Meetings: Second Monday of month plus fourth Monday of May, June, September and October at U of M Saint Paul Campus in 480 Hodson Hall

Show schedule: Annual Mushroom Photography Contest/Show in early winter

Contact:

MMS Correspondence Secretary
1947 Montreal Avenue
Saint Paul, MN 55116
651-699-1263
correspondence@minnesotamushrooms.org

Dues: Individual: \$15.00
Family: \$20.00

NATIVE PLANTS



Minnesota Native Plant Society

Website: www.mnnp.s.org

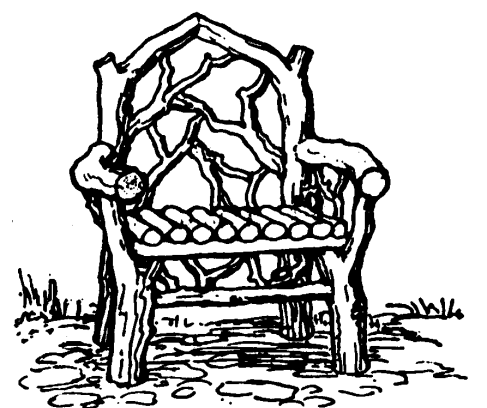
Publication: *Minnesota Plant Press*, quarterly

Meetings: Monthly programs; annual Symposium in April

Contact:

Minnesota Native Plant Society
P.O. Box 496
Bloomington, MN 55420
contact@mnnp.s.org

Dues: Seniors/Students: \$8.00
Individual/Family: \$15.00
Donors: \$25.00



NURSERY AND LANDSCAPE TRADE



Minnesota Nursery and Landscape Association

Website: www.GardenMinnesota.com
Publication: *SCOOP*
Show schedule: Minnesota Green Expo in January
Contact: Bob Fitch, Executive Director
 P.O. Box 130307
 St. Paul, MN 55113
 (651)633-4987
 bob@mnl.biz
Dues: Based on sales

ORCHIDS



Orchid Society of Minnesota

Website: www.orchidsocietyofminnesota.com
Publication: Monthly newsletter
Meetings: Third Saturday monthly at 1:00 p.m. @ Bachman's Heritage Room
Show schedule: Winter Carnival show at Como Conservatory & Minnesota State Fair
Contact: Bob Bulthuis
 952-545-5439
 rbulthuis@mn.rr.com
Dues: Yearly: \$25.00
 Family: \$30.00

ORNAMENTAL GRASS



Ornamental Grass Society of Minnesota

Website: www.ornamentalgrasssociety.org
Contact: Bruce Nelson
 P.O. Box 11144
 St. Paul, MN 55111
 612-729-2112
 mail@ornamentalgrasssociety.org
Dues: Yearly: \$15.00

PEONY



Minnesota Peony Society

Website: www.mnpeony.org
Publication: Newsletter, four times per year
Meetings: Educational meeting in February
Show schedule: Peony Show in June; root auction in September
Contact: Linette Sorrentino
 10255 Jersey Avenue
 Chaska, MN 55318
 952-368-3218
 dakotahgirl@prodigy.net
Dues: Two years: \$5.00

PLANT DEVELOPMENT

Landscape Plant Development Center

Website: www.landscapecenter.org
Publication: *Landscape Plant News*, quarterly
Contact: P.O. Box 444
 Mound MN 55364
 952-443-1505
 info@landscapecenter.org
Dues: Yearly: \$30.00

ROCK GARDEN



North American Rock Garden Society, Minnesota Chapter

Website: www.nargs.org/meet/chap_mn.html
Publication: *Minnesota Rock Plant Notes*
Meetings: Eight times a year with speakers
Show schedule: Plant sales in May and August, and garden tour in June
Contact: Rick Rodich
 8880 Hilltop Dr.
 St. Bonifacius, MN 55375
 952-446-9272
 rrodich@juno.com
Dues: Minnesota chapter: \$15.00
 National, optional: \$35.00

ROSE

Granite City Rose Society

Show schedule: Rose Education Day in April, Rose Show in July
Contact: Debra Keiser
 320-251-0442
 dkeiser@charter.net
Dues: Yearly: \$10.00

Lake Superior Rose Society

Website: www.dgfs.us/lrsr
Meetings: Third Wednesday of month except February, November & December at 6 p.m. at Incline Station
Show schedule: Annual Rose Show in July
Contact: Bruce Berg
 5199 North Shore Drive
 Duluth, MN 55804
 218-525-6716
 lrsrose@cpinternet.com
Dues: Individual: \$15.00
 Family: \$18.00

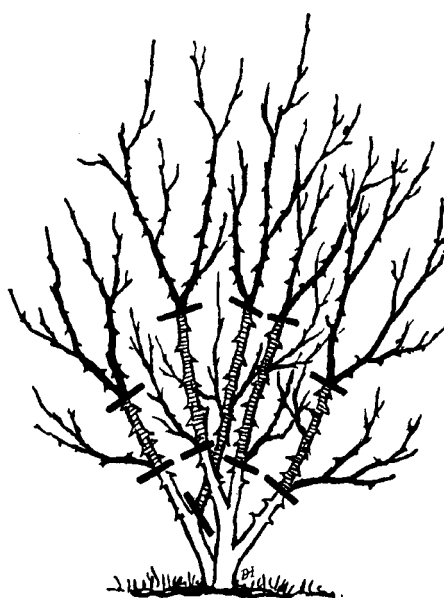


Minnesota Rose Society

Website: www.minnesotarosesociety.org
Publication: *Roseways*
Meetings: With brunch or dinner, times and places vary
Contact: Nancy Carlson
 6105 Rampart Court
 Excelsior, MN 55331
 952-470-7965
 1947nancy@blackhole.com
Dues: Individual: \$15.00
 Associate: \$5.00

Twin Cities Rose Club

Website: www.twincitiesrose.org
Publication: *Twin Cities Rosarian*
Meetings: Six or more per year, call Paulette or Larry at 763-422-1165 for more information
Show schedule: A British and American-style rose show
Contact: Norma Booty
 7412 Upper 136th St. W.
 Apple Valley, MN 55124
 952-432-4313
 applerose44@hotmail.com
Dues: Individual: \$15.00



PRUNING A BEDDING ROSE

TREES

Minnesota Forestry Association

Website: www.mnforest.com
Publications: *Better Forests*, quarterly; *Minnesota FORESTS*, bi-monthly
Contact: Terry Webber, Executive Director
 P.O. Box 496
 Grand Rapids, MN 55744
 800-821-8733
 information@mnforest.com
Dues: Individual: \$35.00
 Family: \$45.00



Minnesota Society of Arboriculture

Website: www.msa-live.org
Publication: *Arborescence*, quarterly
Show schedule: Festival of Trees in May with Minnesota tree climbing championship
Contact: Patty Nolt
 P.O. Box 64
 Wayzata, MN 55391
 612-720-6347
Dues: Arborist: \$30.00
 Supplier: \$45.00

WATER GARDENING

Minnesota Aquarium Society

Website: www.mn-aquarium.org
Publication: *Aqua News*, bimonthly, online only
Meetings: First Thursday of the month except July
Show schedule: Annual fish and aquarium plant show in March; plant sale in December
Contact: Mike Fries
 P.O. Box 130483
 Roseville, MN 55113
 651-489-2973
 president@mn-aquarium.org
Dues: Yearly: \$15.00



Minnesota Water Garden Society

Website: http://mwgs.org
Publication: *Water Log*, 12 times a year
Meetings: Second Sunday each month from 2:00-4:00 p.m. except November and December
Show schedule: TC Pond & Landscape Tour, last two weekends in July
Contact: 612-803-7663
 mwgs@mindspring
Dues: Household: \$25.00