



Non-profit Org.
U.S. Postage
PAID
Twin Cities, MN
Permit No. 1767

FREE
catalog



May 6, 7, 8, 2022
Mothers Day Weekend
Minnesota State Fair
Grandstand
Free Admission

www.FriendsSchoolPlantSale.com



33rd Annual Friends School Plant Sale

May 6, 7, and 8, 2022

Friday 9:00 A.M.—8:00 P.M. • Saturday 10:00 A.M.—6:00 P.M.

Sunday remaining plants one-third off 10:00 A.M.—2:00 P.M.

At the Minnesota State Fair Grandstand • Free admission • Free parking

www.FriendsSchoolPlantSale.com

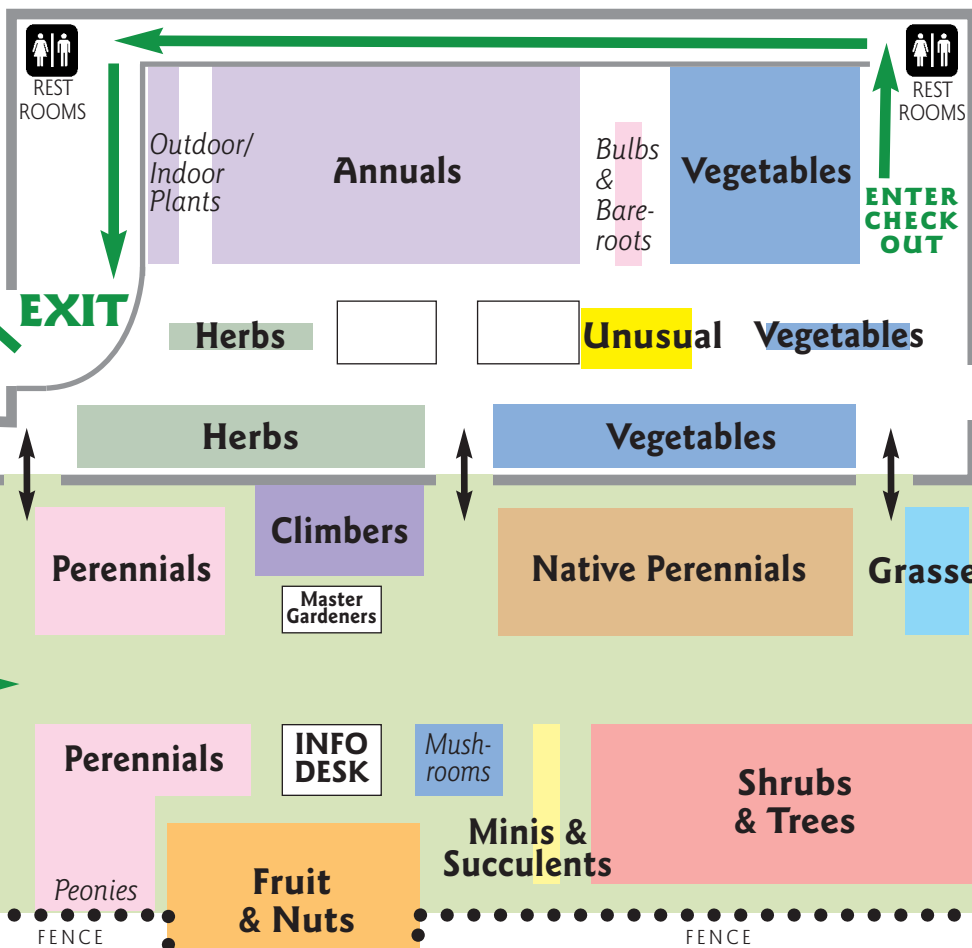
info@FriendsSchoolPlantSale.com • 651-621-8930

Sale Map

We're back in the Grandstand—and we've moved more plants outside

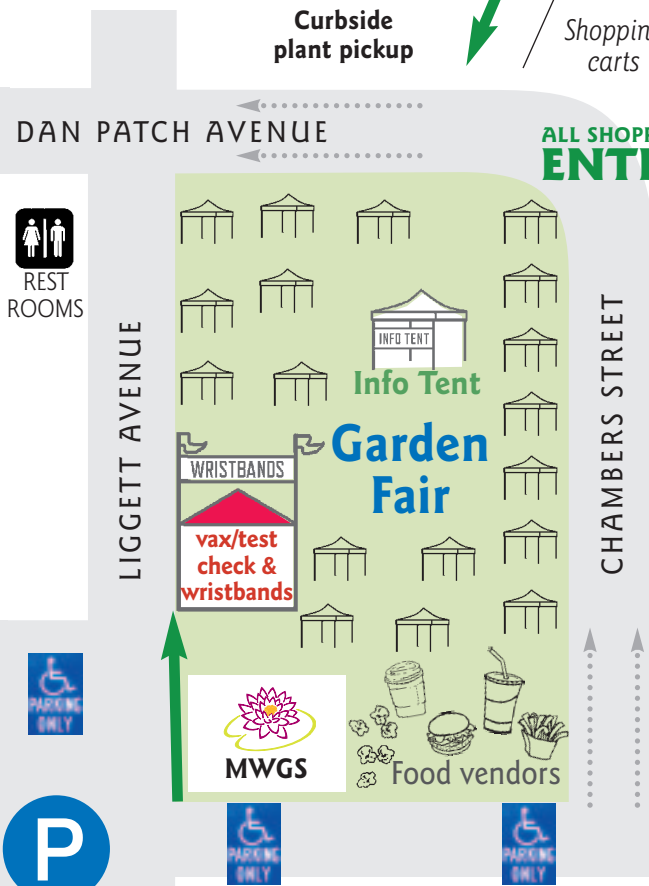
There's free parking in the large parking lot southwest of the Grandstand (it's used as the Midway during the Fair). It's also okay to park on the streets unless posted otherwise.

Sale area inside the Grandstand



Sale area outside in front of the Grandstand

Questions about accessibility?
Call 651-621-8930



CONTENTS

FEATURES

What's New This Year	2
About Friends School	2
How to Do the Sale	3
Garden Fair	4
Water Plants	5-6
Remembering Art Boe	7
Jumping Worms: Another Pest	7
Winter Squash Storage Tips	15
Our Policy on Neonic Pesticides	18
New Houseplants, New Icon	23
Mysteries of Sun, Part Sun, Shade	44

INDEX

By Common Name	58
By Latin Name	59

PLANT LISTINGS

Herbs	8-10
Basil	8
Lavender	10
Vegetables	11-18
Peppers	14-15
Tomatoes	17-18
Unusual & Rare Plants	19-20
Annuals	21-30
Outdoor/Indoor Plants	21-22
Coleus	24
Dahlias	25
Impatiens	26
Marigolds	27
Petunias	28

PLANT LISTINGS

Perennials	31-40
Daylilies	33
Hostas	35
Iris	36
Lilies	37
Peonies	39
Stonecrop	40
Miniatures & Succulents	41-42
Climbing Plants	43-44
Fruit & Nuts	45-46
Shrubs & Trees	47-51
Roses	51
Native Perennials	52-56
Grasses & Sedges	57

What’s New in 2022

Back at the Grandstand, Entry System

We’re back at the Grandstand and using wristbands as customers enter (see page 3). We will also require masks inside the sale area, as we did in 2021. New this year, given the COVID situation: **we will ask for proof of vaccination or a confirmed negative test** before entering the sale area. See the box at right for what we know now about details, and check friendsschoolplantsale.com/covid for updates.

Floor Plan Changes

We’ve made some major changes to the sale’s floor plan, so be sure to study the map (page 1). Highlights: the entrance goes into the outside fenced area, Perennials are outside along with the Info Desk, and the tallers and cashiers are also outside what used to be the exit door. And we’ve added temporary plant parking: If you need to leave your plants and get more, you can park them (with your name) in a volunteer-supervised area near the entrance to the checkout line.

Houseplants

We’ve added our first new symbol in years: houseplant. See the full article on page 23 for more.



Water Gardens

Plants like elephant ears and cannas will be available from the Minnesota Water Garden Society inside the Garden Fair. MWGS has really expanded their offerings, so check out their pages (5–6). They’ll be open for business before the main sale opens each day. Note: **A wristband is not needed** to enter their sale area.

New Plants

This year, we have 480+ new varieties at the sale:

- 151 annuals, including 12 dahlias, 11 petunias, five salvia, seven million bells, 12 coleus, seven begonias, and 14 impatiens,
- 123 perennials, with 15 daylilies, seven hostas, 27 lilies, 16 peonies, and eight hardy mums,
- 61 shrubs or trees, including 10 hydrangeas and 16 roses,
- 26 unusual and rare plants, with more hardy hybrid lady’s slippers,
- 74 vegetables, with 11 hot or sweet peppers and 18 tomatoes. And we’ve switched up our mushroom offering (see V112–V117). They’ll be located near the Info Desk at its new location *outside* under the big overhead ramp.

Accessibility at the Sale

There is marked street parking on Carnes Ave. (the south edge of the Garden Fair), and people with disability hangtags can park in the part of the Midway lot closest to the wristband booth. Please call us at 651-621-8930 with accessibility questions, or email info@FriendsSchoolPlantSale.com.
—Friends School Plant Sale committee

What level of vaccination? What kind of tests?

- As the catalog goes to print in mid-March, this is the plan:
- **Vaccination:** You must be fully vaccinated to enter the sale. Booster shots are recommended but not required. The date of your last vaccine must be at least 2 weeks before entry to the sale.
 - **Testing:** If you are not fully vaccinated, bring the documented results of a rapid COVID test done within 24 hours by an official test site such as a pharmacy or community test site (not a self-administered home kit) or a PCR test done within 72 hours.
 - **Children:** The vaccine-or-testing requirement applies to children ages 5+.
 - **Everyone must be masked** inside the sale area except children under age 2.

If anything changes about these requirements, it will be posted to FriendsSchoolPlantSale.com/covid

Get the latest plant sale news!

As we go to print, we face a changing COVID situation. The Doing the Sale section of our website is continually updated. Please **join our email list**, or **follow us on Facebook or Twitter** for the most up-to-date information.



About Friends School of Minnesota

Dear friends,

Thank you!! We appreciate your dedication to our plant sale and your support for our school.

When Friends School of Minnesota first opened our doors, we asked ourselves, “What kind of fundraiser makes sense for us?”

The values of peace and equity—how to end injustice so that we may all experience true peace—were and are foundational principles of Friends School of Minnesota.

After a bit of contemplation the answer came to us...

If you want peace, plant a garden... and the Friends School Plant Sale was born. That philosophy still lives at the heart of the plant sale community and our sale.

We created a fundraiser that truly matches our values and advances our mission **“to prepare children to embrace life, learning and community with hope, skill, understanding and creativity.”** For a community that believes in peace, justice, simplicity, integrity, serving the environment, and community, what fundraiser could be better than a plant sale?

“My education at Friends School planted seeds that have blossomed in my life, including my commitment to practicing tolerance, acceptance, and my interest in social justice.”

—Chana, class of 1994

Vaccine and Masking Requirements—Caring for Our Community

This year, before you enter the sale you will need to show proof of vaccination or a negative COVID test, and be wearing a mask. Masks are required for both the indoor and outdoor portions of the sale.

Community is a very important Quaker value. During the pandemic, we have expressed care for our community by getting vaccinated, testing, and wearing masks. Whatever the COVID levels, we have kept the most vulnerable of our community in mind and held to these principles to keep everyone as safe as possible.

If the pandemic has taught us anything, it is that things change. Planning for the Friends School Plant Sale starts in September. Important decisions are made very early in the process. Requiring proof of vaccination and masks is one of those decisions. We know that by May, things might change in the broader community. Mask mandates may be lifted, or they may be back in place. We don’t know. We do know that the plant sale is a crowded space. For those reasons, we are erring on the side of caring for our community and requiring proof of vaccination and mask-wearing even if rules have been eased in the broader community by May.

We are absolutely *thrilled* to be back at the Grandstand this year and back together with you, our plant sale community. Thank you for your care, support, and understanding.

Although the plant sale outgrew our school parking lot years ago, your purchases, volunteer hours, and round-up donations still support a vibrant K–8 school that is based on those core values. Your support allows for:

- Average class size: 16
- Generous financial aid for over 40% of families
- Integrated K–8 arts program: music, Spanish, visual arts
- Conflict resolution program to help students navigate relationships, understand differing perspectives, and express empathy—vital skills needed to build a more just world.
- Hands-on, outdoor environmental education

We’re located just 2 miles from the Fairgrounds in the Hamline Midway Neighborhood of St. Paul. Visit our website (fsmn.org) and schedule a tour to learn more.

Thank you again for supporting our school. Your support is vital to our mission, our students, and our larger community.

In gratitude,
Joe Mueller, Head of School
Friends School of Minnesota

Every year, more than 20,000 people visit our plant sale. We try to make the shopping experience as smooth as possible. This is an overview of the sale. You can find more tips and updates on our website.

How do I get into the sale?

Buses stop next to the Fairgrounds on Como Ave. and Snelling Ave. at Como (Gate 9 is the best entry point). There’s a new bike path on Como, too. If you drive, there are free parking spaces, especially in the Midway parking lot. Check the map, page 1.

Whether you arrive before the sale opens or during sale hours, get a wristband and COVID vaccine (or recent negative test) check from the Wristband Booth, located on the west edge of the Garden Fair (details at the bottom of this page).

While you wait for your turn to enter, visit the Garden Fair, including the Minnesota Water Garden Society. You will be outside for this part, so dress for the weather!

How do I shop?

At the Info Tent in the Garden Fair or as you enter the sale, you’ll get a clipboard and tally sheet to record your plants and their prices. **Write down the plant names, prices, and quantities as you select them.** You can also write a list ahead of time (blank sheets are at www.tinyurl.com/plants2022) or set up an online shopping list with quantities and prices at www.FriendsSchoolPlantSale.com like the one shown here:

PLANT	UNIT PRICE	QTY	TOTAL
M001 Dwarf Bougainvillea-Miniature Red, Dwarf, 10" tall 2 in. deep pot	\$9.00	1	\$9.00
M002 F. coccinea-Atropurpurea Plant, 10" tall 4 in. pot	\$9.00	1	\$9.00
M003 S. latifolia-White Rose, 10" tall 4 in. pot	\$9.00	1	\$9.00
M004 Dwarf-Weeping Miniature Norway Spruce 4 in. pot	\$9.00	1	\$9.00
P001 F. coccinea-Weeping Red, 10" tall 2 in. pot	\$9.00	1	\$9.00

Your online list shows each plant’s catalog number and price. You can update the quantity for each plant to get an idea of how much your total will be. It’s easy to remove plants if you change your mind. Print it out and bring it to the sale OR use your list on your phone.

If you’ve preprinted a shopping list from the website, remember to make notes on your list if you add or remove plants or change quantities.

We have a limited number of grocery store carts available, so it’s a great idea to bring your own wheeled wagon or cart (no sleds or linked carts, please).

Once you’re inside, there are maps and signs to help you find the plants you’re looking for.

When’s the best time to come?

Each time has its own flavor. Friday and Saturday morning attract the most people, so if you come at those times you will see the plant sale at its most festive and busy, with the best plant selection.

Why are there wristbands?

Our plant sale is popular. More people want to shop than the Grandstand can comfortably hold. Especially during COVID, we are trying to minimize crowding. Shoppers are given a paper wristband, one per person, as they arrive after the vaccine or test check that is required this year (see page 2 for details). This year, we will continue to give out entry wristbands, whether numbered or unnumbered, all day, until close.

With a numbered wristband, you don’t have to stand in line during the busiest times. It’s the fairest way to handle the number of people who want to enter the sale at the same time. Wristbands are distributed at the Wristband Booth starting at:

- **Friday: 6:30 a.m.** (sale opens at 9:00 a.m.)
- **Saturday: 8:15 a.m.** (sale opens at 10:00 a.m.)
- **Sunday: 9:00 a.m.** (sale opens at 10:00 a.m., all remaining plants 1/3 off)

How to Do the Sale

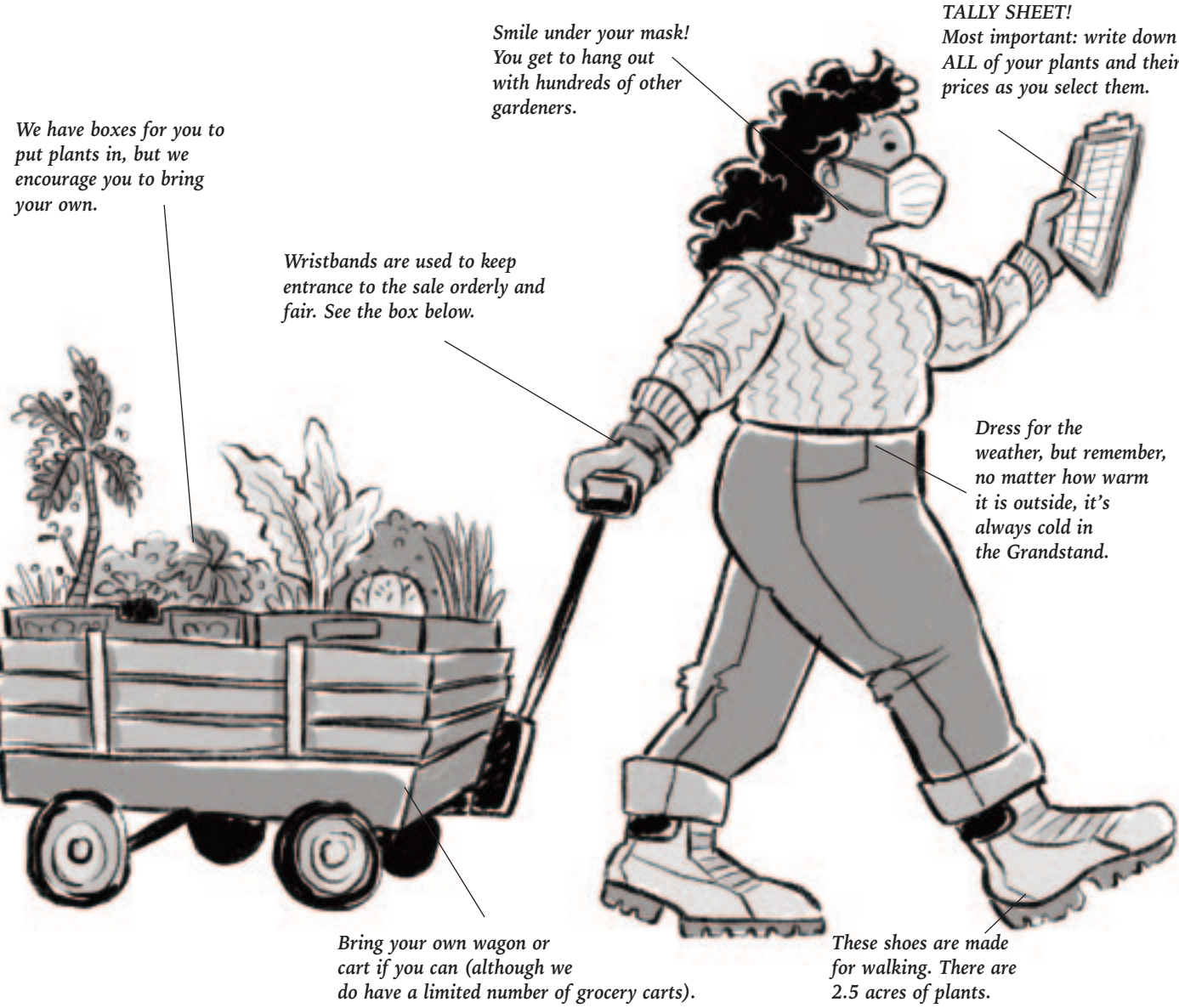


ILLUSTRATION BY RUBY THOMPSON, FRIENDS SCHOOL ALUM

Later in the afternoon on Friday and Saturday is great for relaxed shopping with little waiting. Sunday is always an adventure. See what you can get for one-third off!

Are there lines?

- There are three lines that you might experience:
1. **Vaccine check/wristband line:** this will be longest in the mornings to early afternoon. Later, it should be minimal.
 2. **Entry line:** this is where you go, briefly, when your wristband number is called.
 3. **Checkout line:** If this occurs, it may seem long but it moves, in the words of one shopper, “freaky fast.” Look for the “Enter Line Here” sign along the east wall.

Later in the day, there are no entry lines after you have a wristband, and often no line at the checkout.

How are the plants organized?

Within each section (Herbs, Grasses, etc.) plants are alphabetical by their common names and are numbered, as in the catalog. You can also look plants up in the index, pages 58 and 59.

Who can answer my questions?

Look for students and volunteers in bright yellow “Ask Me” vests, or sale organizers with pink hats or even balloons floating above their heads. The Info Desk is under the big ramp in front of the Grandstand, and before you enter the sale, there’s an Info Tent in the Garden Fair.

What about checking out?

Checkout is a two-step process: Your plants are added up in one area, based on your tally sheet, then you go to the cashier tables to pay. You can use check, Apple Pay, or credit/debit card (Visa, Mastercard, Discover and American Express). *No cash again this year.*

Always write the full price of plants on your tally sheet. On discount Sunday, the one-third discount is taken at the register.

After paying, you can **leave your plants at curbside plant pickup** west of the Grandstand and return to get them with your car. If you used one of our shopping carts, you cannot take the cart to your car. Volunteers in orange vests will help at the curb.

Thanks!

This catalog is brought to you by:

AJ Zozulin
Annamary Herther
Anne Levin
Carol Herman
Chari Brudnak
Chris Dart
Gretchen Hovan
Henry Fieldseth
Huong Nguyen
Jenn Lanz
Kath Ouska
Kim Erickson
Laurie Krivitz
Mary Schwartzbauer
Michelle Mero Riedel
Nancy Scherer
Pat Thompson
Ruby Thompson
Sara Barsel
Sophie Seaberg-Wood
Tina Hammer
Torla Erhart

Friends School of Minnesota
1365 Englewood Ave.
Saint Paul, Minn.
55104
651-917-0636
info@FriendsSchoolPlantSale.com
www.FriendsSchoolPlantSale.com
Twitter: @plantsale

On the cover
Flowering maple (*Abutilon* Biltmore Ballgown) can be found in the Outdoor/Indoor section in Annuals, A016 on page 21.
Photo by Michelle Mero Riedel

Garden Fair

Located in the grassy field southwest of the Grandstand (see map, page 1).

EXHIBITOR HOURS

Friday 7:00 a.m.–6:30 p.m.

Saturday 8:30 a.m.–6:00 p.m.

Sunday 9:00 a.m.–2:00 p.m.

Some exhibitors may be open shorter or longer hours.

Some may not be open on Sunday.

More exhibitors may be added to the Garden Fair. Please check our website for updates: www.FriendsSchoolPlantSale.com/gardenfair

Barn Quilts

Choose a 2’ square painted wooden barn quilt to hang on your fence, house, deck, or garden pole. Go to [Barn Quilts by Mary](#) on Facebook to see samples.



Cowsmo



Fifth-generation dairy farmers from near Cochrane, Wisconsin, make and sell the finest cow manure compost, organic compost and potting soils throughout the Midwest. Check their website for local businesses in the Twin Cities and suburbs where the compost is sold. www.CowsmoCompost.com

Down Home Enterprises

Garden art, from rusty garden flowers to a mix of stained glass to bird feeders to kinetic movement. Steel, glass, stone and antique finds. Whimsical snails, insects to enjoy in your garden setting. www.facebook.com/DownHomeSculptures



Eddie’s Artwork

Eddie crafts copper and cedar garden art, birdhouses, and birdfeeders. Find him on Etsy: www.etsy.com/shop/EddiesArtWork

Garden Iron Creations

Trellises, benches, planters, arches, and décor. Tin animals, metal art, and baskets.

Growing Blue Flowers




Insect repellents, hand sanitizers, salves, and soaps are all handmade with 100-percent natural ingredients, in harmony with nature. www.GrowingBlueFlowers.com

Holistic Health Farms*

Reasonably priced burlap coffee bags for weed barrier and a million other purposes. Can also be arranged for easy pickup at their site near the Minnesota State Fairgrounds. tp@holistichealthfarms.com



Honey Do Products Plant Stakes **NEW**



Mark herb, vegetable, and flower gardens with these 7.75” plant marker stakes, available in 56 plant names from Asparagus to Zucchini and Alyssum to Zinnia. The perfect gift for your favorite gardener.

KM Leaves **NEW**

Concrete leaf casts, each one unique— starting from an individual leaf that is cast and then hand-painted using outdoor acrylic paints. They can be used indoors or outdoors, as centerpieces, bird baths, yard decorations, and much more! Most can be hung on a vertical surface using embedded hooks on the back. KMLeaves.com



Minnesota Rusco

This remodeling company offers patio doors and garden windows. www.minnesotarusco.com

Minnesota State Horticultural Society

Frustrated by the mountain of inaccurate or irrelevant growing info for northern gardeners? We get it—we live and garden in a short season, too. For 155+ years, the Minnesota State Horticultural Society (MSHS) has been supporting northern gardeners of all ages and skill levels with *Northern Gardener* magazine, classes, an online Resource Hub, blog and bimonthly enews. Find growing tips and inspiration for this area, so you can spend less time digging for info and more time enjoying your garden. MSHS members save \$5 on a purchase of \$50 or more at the Friends School Plant Sale, among many other discounts. Not a member? Join our growing northern gardener community today! www.northerngardener.org/membership



Minnesota Water Garden Society

See their plant listings on pages 5 and 6. MWGS was founded to increase the enjoyment and enthusiasm for water gardening through promotion, education and shared experiences. It offers a newsletter, meetings (currently video-conferencing), pond parties, and a Garden Tour open to the public. Membership is \$35 per year. Check out its activities and great water garden resources at www.mwgs.org or follow them on Facebook.



Minnesota Waterscapes **NEW**

Landscape contractor specializing in water features. Builds new water gardens: ponds, waterfalls, fountains. Also provides maintenance services and repairs. Email for a free copy of “7 questions to ask when choosing a water feature.” www.mnponds.com



Of Nature

Sculpture and jewelry created from natural objects that are encased in copper and other metals. Finished with sculpture wax to make a lovely addition to your garden. www.ofnature.com



Ramsey County Master Gardeners

Selling Atlas nitrile garden gloves and offering plant and garden information from experts.



River Bend Gardens



Items to beautify your garden: amethyst rocks for outdoor gardens, flower pots, and fairy gardens; “imagination” flower pots from antique and collectible treasures; garden sculpture and miscellaneous garden items; simple organic fertilizer. A new name for *Old River Road Antiques*.

Sky Chairs

Hand-crafted in Minnesota and sold only at street fairs and festivals. And after the sale, we still support our customers the best way we know how: just like a SKY chair. www.skychairs.com



Stonecrete



Exquisite hand-cast stepping stones for the exterior and interior of the home. Plus flagstone, slate, river rock, ledge stack, and interior tiles. www.stonecreteonline.com

Two Mikes

Green Fin Plant Care is a 100%-natural fertilizer produced responsibly from invasive carp species that are damaging Minnesota waterways. Made in the Twin Cities area, Green Fin Plant Care is great for home, garden, or field use. It contains the rich nutrients your plants and crops crave. www.twomikes.net



GARDEN FAIR FOOD

HOURS (unless noted otherwise)

Friday 6:30 a.m.–7:00 p.m.
Saturday 8:00 a.m.–6:30 p.m.
Sunday 8:30 a.m.–2:30 p.m.

Anchor Coffee

Serving small-batch-roasted organic beans with a full espresso bar. Offering light breakfast options: muffins and breakfast sandwiches. Anchor’s main shop is in the heart of White Bear Lake.



CinnieSmith’s

Gourmet mini cinnamon rolls, ice cream, sundaes, floats, shakes, hot and iced drinks.



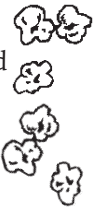
Smokey’s Charbroiler

Quarter-pound chopped beefsteak burgers, all-beef hot dogs, pulled pork and chicken, nachos, salmon burgers, and veggie burgers. Plus bratwurst, fancy extra-long french fries, onion rings, chicken strips, corn dogs, hot ham and cheese, and fountain pop. Coffee and breakfast offerings, too.



Two Rivers Kettle Korn

Popped fresh with a mix of sweet and salty. It’s a State Fair treat in May! Friday 9:00 a.m.–8:00 p.m.
Saturday 10:00 a.m.–6:00 p.m.
Sunday 10:00 a.m.–2:00 p.m.



There are no workshops in the Garden Fair this year. We hope to have them back next year.

Remembering Art Boe



Mertyann Boe and Art Boe (1933–2021), owners of North Star Seed & Nursery in Faribault, back in 2015.

Friends School Plant Sale lost one of its long-time growers last year when North Star Seed & Nursery in Faribault closed its doors after the death of Art Boe. The business opened in 1993 as the second career for Art and his wife and partner, Mertyann Boe. Art had been a plant-science researcher in Brazil and Portugal and a scientist, college professor, and department chair at the University of Idaho and North Dakota State University.

Art was originally from the Faribault area, so he and Mertyann returned there to a cluster of greenhouses where they cultivated a loyal local following, developing and patenting plants and running a garden center for people in the area. Mertyann packaged seeds by hand, talked to customers, and ran the register, while Art knew where every plant was and treated each one like his baby.

Friends School’s Henry Fieldseth met the Boes at the Northern Green Expo at the Minneapolis Convention Center more than 20 years ago and saw that they had cool perennials in small, affordable pots, plus smaller trees and shrubs. He soon learned that Art often propagated plants himself, which kept costs down.

Friends School Plant Sale began offering plants from North Star soon after.

“I wish I had paid more attention to all the things he told me,” Henry said. “He was really free with gently educating people. He knew a lot, and he had a nice way of transmitting information in bite-size bits. His customers liked him for that.”

Pat Thompson remembers one time when she took a young plant sale volunteer who had their eye on the field of botany down to North Star to help load plants for the trip to St. Paul. When Art heard about the young person’s career interest, he had an opinion, recommending the field of horticulture instead. “You know what a horticulturalist is, right?” he asked. No, said the young volunteer. “A botanist with a job,” Art deadpanned.

After Art’s death and with Mertyann’s permission, Henry brought some of Art’s plant material to another locally owned nursery for propagation, so we hope to continue his legacy at future plant sales.

Even this year, you’ll see references to Art among the plants in the catalog, such as his North Pole arborvitae, or his favorite tomatoes. We miss him, but his contributions to the plant world live on.

A note from Mr. Yuk

We mark some plants in the catalog with a Mr. Yuk sign ☹️. These are plants known to be toxic to humans in some way. We do this because we care about your health, but the issue is complex, so please read the full-length article about this on our website, www.FriendsSchoolPlantSale.com/poisonous-plants.

There are, however, a few plants in the sale that are particularly poisonous and capable of causing serious illness or death to humans:

Common name	Botanical name	Catalog numbers
Angel’s Trumpet	<i>Brugmansia</i>	A001, A002
Angel’s Trumpet	<i>Datura</i>	A043
Castor Bean	<i>Ricinus</i>	A096–A098
Foxglove	<i>Digitalis</i>	P208–P212, U055
Monkshood	<i>Aconitum</i>	P383, P384

It is generally a bad idea to chew on ANY plant that is not clearly for human consumption, Mr. Yuk sticker or no. We get expert advice on this issue, but individuals vary, and experts do not know everything.

What about medicinal plants? 🍵

Never assume that a medicinal plant is safe or nontoxic. Many highly poisonous plants or plant parts contain medicinal compounds that are extracted from them in specific ways. Several of the highly toxic plants listed above are also medicinal (Angel’s Trumpet, Castor Bean, Foxglove). Friends School Plant Sale does not recommend the use of any plant marked as medicinal for self-medication or treatment of others.

If you want to learn more about poisonous plants, read this full-length article on our website: www.FriendsSchoolPlantSale.com/poisonous-plants

Another article by Mr. Yuk about responsible gardening can be found at www.FriendsSchoolPlantSale.com/responsible-gardening

Jumping Worms

Another issue for Minnesota gardeners

More and more gardeners have become aware that there’s a new pest to be watch out for: jumping worms.

The worms live in the top 2” of soil and voraciously consume organic matter like leaves and mulch, turning the soil into what looks like coffee grounds. This makes erosion and plant damage likely, and removes nutrients from the soil.

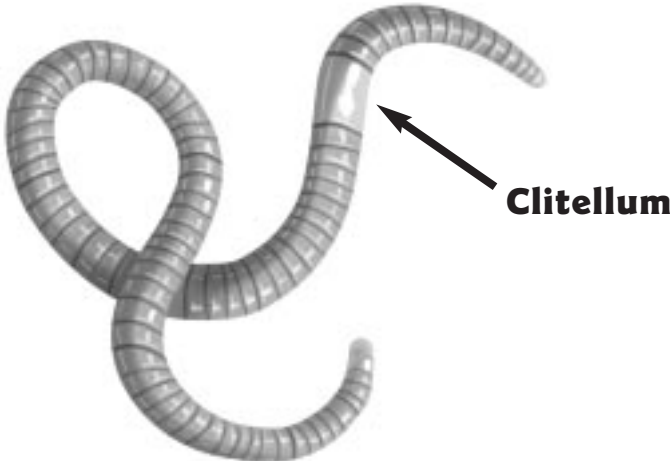
How do they spread?

- Two common gardening practices spread jumping worms and their tiny egg cocoons:
- If you get a plant dug from a friend’s garden or from a garden club’s plant swap and it still has any soil on its roots, you may be introducing the worms into your garden soil if its home soil has an infestation.
 - If you use wood mulch or wood chips around your plants, the worms and eggs can live in that.

As far as is known now, only heat of about 90° kills the worms and 115° kills the cocoons. Researchers believe the worms are killed by our winters, but the egg cocoons survive in the top two inches of soil to hatch the next year.

What about the plant sale?

So, what about plants purchased from nurseries, garden centers, and particularly



Jumping worms have a flattened clitellum and a short “head” with about 14 rings above the clitellum. If there are many more rings than that, it’s a nightcrawler or other type of earthworm.

the Friends School Plant Sale?

All of the growers for the Friends School Plant Sale are certified by the Minnesota Nursery and Landscape Association (or their own state’s equivalent) and therefore use soil-free potting mixes, rather than soil from the ground.

Even before the jumping worm problem, MNLA members have been greatly concerned about not spreading plant diseases through potting soil, tools, and plant materials. Their businesses depend on having their practices and plants inspected. We have paperwork from our growers stating that they are inspected by the Minnesota Department of Agriculture each year.

What can you do?

Prevention is the only possibility right now. Researchers at the University

of Minnesota are working to find possible treatments, but it’s not known if there will be one, or whether it will be acceptable for use by many gardeners even if they do.

You can find some Minnesota-specific links on this problem on our website, friendsschoolplantsale.com/jumping-worms

Iding the worms

Jumping worms start small when they hatch from tiny eggs in the spring. They cannot be confidently identified until they grow larger and mature in late July–early August. At that point, if you suspect jumping worms, please send high-resolution photos with a clear view of the segments between the mouth and clitellum (the ring around the body) directly to Laura.Vanriper@state.mn.us at the DNR for identification.

Annuals

A086 **Butter Daisy** *Melampodium Showstar*
Gold 1" daisies with deeper gold centers. Blooms continuously without deadheading. Loves heat. Deer-resistant. Rated one of the very best annuals for bees three years running by U of M researchers. 12–15"h **\$5.00—4" pot**

Butterfly Flower *Aselepias curassavica*
Strong stems hold up umbels of brightly colored flowers very attractive to butterflies. Excellent cut flowers. From South America. 28–40"h
\$5.00—6 plants in a pack:
A087 **Silky Deep Red** —Dark red with gold.
A088 **Silky Gold** —Orangey yellow.

See also MILKWEED, page 55

A089 **Cabbage, Ornamental** *Brassica oleracea* Glamour Red
Dark blue-green leaves with a magenta center. Glossy leaves instead of the usual waxy finish. Beautiful from spring onwards. Colorful, easy plants last into winter. Brightest color in full sun and when the nights are cool. Edible, too! 12"h
\$3.00—4 plants in a pack

Calendula *Calendula officinalis*
Daisies whose petals can be used in salads. Use in soups and stews for color and flavor. Prefers cooler temperatures, so appreciates filtered sun. Cold-tolerant, providing nonstop color from spring through first frost. Deadhead for rebloom in late summer. May self-seed.
\$3.00—3.5" pot:
A090 **Alpha** —Bright orange flowers with high resin content, ideal for making lotions and creams. 24–30"h

\$3.00—4 plants in a pack:
A091 **Oopsy Daisy** —Mix of cream to yellow single and semi-double flowers with orange tips. 8–12"h
\$3.00—seed packets:
A092 **Pacific Beauty Mix** —Semi-doubles and doubles in shades of orange, apricot, gold, and yellow. 12–24"h

\$3.50—seed packets:
A093 **Radio**—Radiating orange-yellow quills pack each flower. 18–24"h
\$5.00—6 plants in a pack:
A094 **Indian Prince** —Double flowers with dark centers surrounded by gold petals. Mahogany undersides. 18–24"h

A095 **Cardoon** *Cynara cardunculus*
Plant it for its fabulous architectural good looks. You'll enjoy its bold stalks of huge silver-green prickly serrated leaves. Cold tolerant. The edible leaf stalks taste like artichoke. 60"h **\$5.00—4" pot**

Castor Bean *Ricinus communis*
Spectacular tropical foliage. The entire plant is very poisonous, particularly the seeds, which should be removed before they ripen. Grow in fertile, well-drained soil. It really can get as tall as noted in one summer: it's a great way to have a "tree" without the expense or the commitment.

\$5.00—4" pot:
A096 **Carmencita** —Decorative 12–18" leaves are a deep red-bronze and the flowers are electric rose. 48–72"h
A097 **New Zealand Purple** —Giant dark bronze-purple leaves with a metallic sheen. Cream-colored flowers develop into prickly purple seed pods that match the foliage. 72–96"h
A098 **Zanzibar** —Largest of all the castor bean plants with green leaves up to 36" wide. You'll be amazed at how big this one gets in one Minnesota summer. Can't be beat for cost per square inch. 120"h

A099 **Cigar Flower**
Cuphea Hummingbird's Lunch
Pinkish red and yellow flowers bloom summer to fall. Small, tubular flowers are especially attractive to hummingbirds. Very heat tolerant, and needs no dead-heading. 18–24"h by 24–36"w **\$5.00—4" pot**

A100 **Cockscomb**
Celosia argentea cristata Amigo Mix
Velvety red, fuchsia, pink, or yellow. Fan-shaped flower heads have a convoluted, crumpled look like brain coral. Grown for cut flowers. Drought-tolerant and easy. Leaves are edible like spinach. 6"h
\$3.00—4 plants in a pack



Cockscomb

Coleus see box, page 24



Double calendula

the center or look air-brushed with pink. Sturdy, upright, bushy plants. 20–30"h
A135 **Cosmic Mix** *C. sulphureus* —Double and semi-double 2" flowers in shades of orange, red, and yellow. 12–18"h
A136 **Sea Shells Mix** *C. bipinnatus* —Charming mix of white, pink, rose, and crimson 3" flowers with petals that curl up at the edges to form tubes or cones. 36–48"h
\$3.00—seed packets:
A137 **Bright Lights Mix** *C. sulphureus*—Semi-double 2–3" flowers in many shades of yellow, orange, and red. 36"h by 14–16"w
A138 **Sensation Mix** *C. bipinnatus*—Semi-double pink, dark magenta, and white 4–6" flowers. 36–48"h

\$3.50—seed packets:
A139 **Fizzy White** *C. bipinnatus* —Double and semi-double 2–4" white flowers. 36"h by 18–24"w
\$5.00—6 plants in a pack:
A140 **Cosimo Dancing Dolls** *C. bipinnatus* —White and pink brush marks on dark magenta petals. No two flowers are alike. 24–36"h
A141 **Cupcakes and Saucers Mix** *C. bipinnatus* —Unique variety in which the individual petals of a classic cosmos have merged together to form a delicate-looking bowl with a scalloped edge. Some flowers in this white, pink, and pink-blushed mix have a rose eye and some have extra frilly petals around their gold centers. Easy to grow and stands up to rain. 24–30"h
A142 **Diablo** *C. sulphureus* —Semi-double red or orange petals are brushed with gold. Save the seeds for next year. 48–60"h

COSMOS CONTINUED ON PAGE 24

Key
 Full sun
 Part sun/part shade
 Shade

Attractive to bees
 Audubon-endorsed
 Butterfly-friendly
 Hummingbird-friendly

 Attractive foliage
 Culinary
 Edible flowers
 Ground cover
 Houseplant
 Medicinal
 Minnesota native
 Rock garden

Cold-sensitive: keep above 40°F
 Toxic to humans
 Saturday restock



New Houseplants, New Icon

We have many houseplants for you this year and we've given them a new houseplant icon. This symbol marks plants we think will grow well indoors year-round in window light. You'll find houseplants throughout the catalog, many of them in the Outdoor/Indoor or Miniatures & Succulents sections.

Houseplants provide the obvious visual interest of foliage and flowers, but can also improve the indoor air quality in our homes. Plants such as English ivy, aloe vera, and tropical spiderwort are among the best for scrubbing indoor air.

Some houseplants are easy to grow, coping well with lower light levels and dry air indoors. Among the easiest we offer are snake plant, Chinese money plant, jade tree, Swiss cheese plant, begonias, and happy bean. Succulents in general are on the easy end of things as long as you don't over-water them.

Other houseplants are well worth a bit of extra care. Maidenhair ferns and baby tears need either diligent watering or to grow in terrariums, which satisfy their need for high humidity. If you're using a mixture of plants in a terrarium, be sure all have the same needs, only add water when soil is dry, and/or mist for moisture. Since space is limited, start

with small plants. Dish gardens are attractive for succulents. Again, choose plants that share the same needs—this time for dry conditions—as well as being proportionate in size and slow-growing. Houseplants can have quite long lifespans, becoming old friends and even being passed down as an inheritance, like grandma's tropical spiderwort or English ivy.

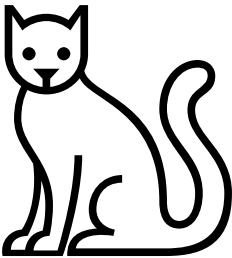
While we want to reserve the new houseplant symbol for plants that will be happy without ever needing to spend time outside or in a garden, some gardeners pot up favorite nonhardy plants from their garden to extend the joys of summer. These plants overwinter indoors and then return outside to the garden for another growing season. Many will look great as temporary houseplants and some will even bloom, while others' highest aspiration is to survive until they can return outdoors.

Container-grown plants are easy to transfer from garden to house and back to the garden again because their roots are already at home in a pot. Purple-leafed oxalis, miniature creeping figs, and fancy-leafed rex begonias are among the part-shade plants to treat this way.

Indoors, these are happy in a bright but not sunny location. Plants that do need more sun, such as a Medusa hot pepper or a scented geranium, will appreciate as much light as you can give them. Herbs like creeping rosemary and chives can continue to provide snips for culinary use if given enough indoor sun (four hours).

Lantana, fuchsia, sweet potato vine, copperleaf, and many other sun-loving garden plants can be kept inside for the winter. An excellent source of information about overwintering these tender perennials is Steve Silk's article in *Fine Gardening* magazine: www.finegardening.com/article/overwintering-tender-plants

When outdoor plants are brought into the house they should be thoroughly washed, including the pots, to eliminate bothersome insects.



One cautionary note: Lists of plants toxic to pets are found at ASPCA.org/apcc.

Doing a little research or getting some advice from a houseplant-loving friend to see what plants will work best in your house is a good idea. Let us know how your plants do as we gather information about which of our plants make great houseplants and which over-winter indoors successfully.

—by Nancy, Carol, and Pat

Houseplants mentioned in the article

Aloe H001
Baby tears M025
Begonias A004–A007
Chinese money plant M026
Geraniums A196–A204, H0048–H054
Happy bean M033
Ivy collection A019
Jade tree M036–M038
Maidenhair fern A013–A014
Oxalis A336
Pepper, Medusa V158
Swiss cheese plant A034–A035
Snake plant A023
Spiderwort A024–A026
Succulents—pages 41, 42

